

**ARG43306**  
anti-CTHRC1 antibodyPackage: 50 µl  
Store at: -20°C

### Summary

Product Description	Mouse Monoclonal antibody recognizes CTHRC1
Tested Reactivity	Hu
Predict Reactivity	Ms, Rat
Tested Application	IHC-P, WB
Host	Mouse
Clonality	Monoclonal
Isotype	IgG1
Target Name	CTHRC1
Species	Human
Immunogen	Recombinant protein of Human CTHRC1.
Conjugation	Un-conjugated
Alternate Names	Protein NMTC1; Collagen triple helix repeat-containing protein 1

### Application Instructions

Application table	Application	Dilution
	IHC-P	1:50 - 1:200
	WB	1:500 - 1:1000
Application Note	* The dilutions indicate recommended starting dilutions and the optimal dilutions or concentrations should be determined by the scientist.	
Observed Size	~ 30 kDa	

### Properties

Form	Liquid
Purification	Purification with Protein A.
Buffer	PBS (pH 7.2), 0.02% Sodium azide and 50% Glycerol.
Preservative	0.02% Sodium azide
Stabilizer	50% Glycerol
Concentration	1 mg/ml
Storage instruction	For continuous use, store undiluted antibody at 2-8°C for up to a week. For long-term storage, aliquot and store at -20°C. Storage in frost free freezers is not recommended. Avoid repeated freeze/thaw cycles. Suggest spin the vial prior to opening. The antibody solution should be gently mixed before use.

**Note**

For laboratory research only, not for drug, diagnostic or other use.

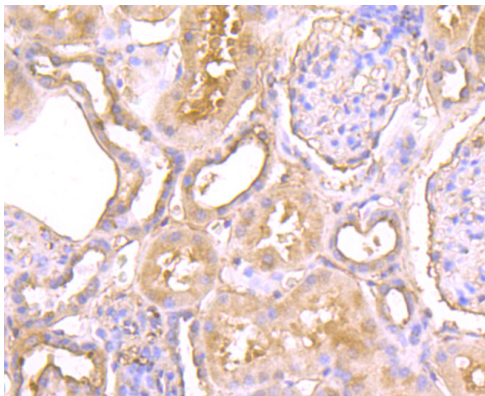
## Bioinformation

---

Gene Symbol	CTHRC1
Gene Full Name	collagen triple helix repeat containing 1
Background	This locus encodes a protein that may play a role in the cellular response to arterial injury through involvement in vascular remodeling. Mutations at this locus have been associated with Barrett esophagus and esophageal adenocarcinoma. Alternatively spliced transcript variants have been described. [provided by RefSeq, Jan 2012]
Function	May act as a negative regulator of collagen matrix deposition. [UniProt]
Calculated Mw	26 kDa
PTM	N-glycosylated. [UniProt]
Cellular Localization	Secreted, extracellular space, extracellular matrix. [UniProt]

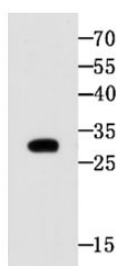
## Images

---



ARG43306 anti-CTHRC1 antibody IHC-P image

Immunohistochemistry: Paraffin-embedded Human kidney tissue stained with ARG43306 anti-CTHRC1 antibody. Counter stained with hematoxylin.



Human CTHRC1 recombinant protein

ARG43306 anti-CTHRC1 antibody WB image

Western blot: Human CTHRC1 recombinant protein stained with ARG43306 anti-CTHRC1 antibody at 1:500 dilution.