

## ARG43290 anti-Neurotrophin 3 antibody

Package: 100 µl  
Store at: -20°C

### Summary

Product Description	Rabbit Polyclonal antibody recognizes Neurotrophin 3
Tested Reactivity	Hu, Rat
Predict Reactivity	Ms
Tested Application	FACS, WB
Host	Rabbit
Clonality	Polyclonal
Isotype	IgG
Target Name	Neurotrophin 3
Species	Human
Immunogen	KLH-conjugated synthetic peptide between aa. 152-184 of Human Neurotrophin 3.
Conjugation	Un-conjugated
Alternate Names	Nerve growth factor 2; NT3; HDNF; Neurotrophic factor; Neurotrophin-3; NT-3; NGF2; NGF-2

### Application Instructions

Application table	Application	Dilution
	FACS	1:25
	WB	1:2000
Application Note	* The dilutions indicate recommended starting dilutions and the optimal dilutions or concentrations should be determined by the scientist.	
Positive Control	Human ovary	
Observed Size	~ 27 kDa	

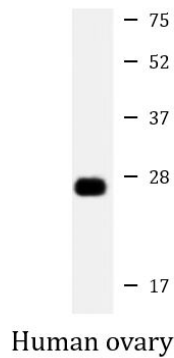
### Properties

Form	Liquid
Purification	Purification with Protein A and immunogen peptide.
Buffer	PBS and 0.09% (W/V) Sodium azide.
Preservative	0.09% (W/V) Sodium azide
Storage instruction	For continuous use, store undiluted antibody at 2-8°C for up to a week. For long-term storage, aliquot and store at -20°C or below. Storage in frost free freezers is not recommended. Avoid repeated freeze/thaw cycles. Suggest spin the vial prior to opening. The antibody solution should be gently mixed before use.
Note	For laboratory research only, not for drug, diagnostic or other use.

## Bioinformation

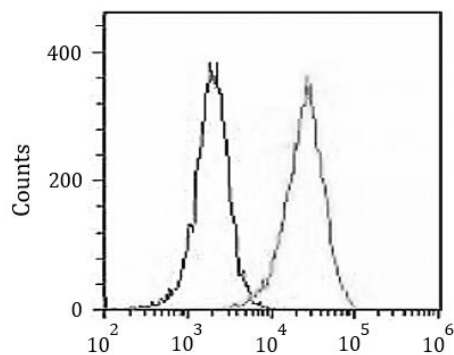
Gene Symbol	NTF3
Gene Full Name	neurotrophin 3
Background	The protein encoded by this gene is a member of the neurotrophin family, that controls survival and differentiation of mammalian neurons. This protein is closely related to both nerve growth factor and brain-derived neurotrophic factor. It may be involved in the maintenance of the adult nervous system, and may affect development of neurons in the embryo when it is expressed in human placenta. NTF3-deficient mice generated by gene targeting display severe movement defects of the limbs. The mature peptide of this protein is identical in all mammals examined including human, pig, rat and mouse. [provided by RefSeq, Jul 2008]
Function	Seems to promote the survival of visceral and proprioceptive sensory neurons. [UniProt]
Calculated Mw	29 kDa
Cellular Localization	Secreted. [UniProt]

## Images



ARG43290 anti-Neurotrophin 3 antibody WB image

Western blot: 20  $\mu$ g of Human ovary lysate stained with ARG43290 anti-Neurotrophin 3 antibody at 1:2000 dilution.



ARG43290 anti-Neurotrophin 3 antibody FACS image

Flow Cytometry: HeLa cells were fixed with 2% paraformaldehyde (10 min) and then permeabilized with 90% methanol for 10 min. Cells were incubated in 2% BSA to block non-specific protein-protein interactions. Cells were stained with ARG43290 anti-Neurotrophin 3 antibody (right histogram) at 1:25 dilution for 60 min at 37°C, followed by incubation with DyLight<sup>®</sup>488 labelled secondary antibody. Isotype control antibody (left histogram) was rabbit IgG1 (1  $\mu$ g/ $10^6$  cells) used under the same conditions.