

ARG43277 anti-MEX3A antibody

Package: 50 µl
Store at: -20°C

Summary

Product Description	Rabbit Polyclonal antibody recognizes MEX3A
Tested Reactivity	Hu
Predict Reactivity	Ms, Rat, Cow, Dog, Gpig, Hrs, Rb
Tested Application	WB
Host	Rabbit
Clonality	Polyclonal
Isotype	IgG
Target Name	MEX3A
Species	Human
Immunogen	Synthetic peptide around the N-terminal region of Human MEX3A. (within the following region: GEEPV FMVTG RREDV ATARR EIISA AEHFS MIRAS RNKSG AAFGV APALP)
Conjugation	Un-conjugated
Alternate Names	RING finger and KH domain-containing protein 4; RKHD4; RNA-binding protein MEX3A; MEX-3A

Application Instructions

Predict Reactivity Note	Predicted Homology Based on Immunogen Sequence: Human, Cow, Dog, Guinea pig, Horse, Mouse, Rabbit, Rat: 100%				
Application table	<table><thead><tr><th>Application</th><th>Dilution</th></tr></thead><tbody><tr><td>WB</td><td>1 µg/ml</td></tr></tbody></table>	Application	Dilution	WB	1 µg/ml
Application	Dilution				
WB	1 µg/ml				
Application Note	* The dilutions indicate recommended starting dilutions and the optimal dilutions or concentrations should be determined by the scientist.				
Positive Control	Human brain				
Observed Size	~ 54 kDa				

Properties

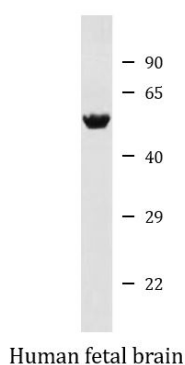
Form	Liquid
Purification	Affinity purified.
Buffer	PBS, 0.09% (w/v) Sodium azide and 2% Sucrose.
Preservative	0.09% (w/v) Sodium azide
Stabilizer	2% Sucrose
Concentration	Batch dependent: 0.5 - 1 mg/ml

Storage instruction	For continuous use, store undiluted antibody at 2-8°C for up to a week. For long-term storage, aliquot and store at -20°C or below. Storage in frost free freezers is not recommended. Avoid repeated freeze/thaw cycles. Suggest spin the vial prior to opening. The antibody solution should be gently mixed before use.
Note	For laboratory research only, not for drug, diagnostic or other use.

Bioinformation

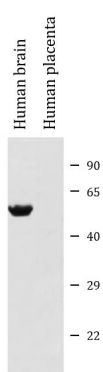
Gene Symbol	MEX3A
Gene Full Name	mex-3 RNA binding family member A
Function	RNA binding protein, may be involved in post-transcriptional regulatory mechanisms. [UniProt]
Calculated Mw	54 kDa
PTM	Phosphorylated. [UniProt]
Cellular Localization	Cytoplasm. Nucleus. Cytoplasm, P-body. Note=Predominantly expressed in the cytoplasm and shuttles between the cytoplasm and the nucleus through the CRM1 export pathway. [UniProt]

Images



ARG43277 anti-MEX3A antibody WB image

Western blot: Human fetal brain lysate stained with ARG43277 anti-MEX3A antibody at 1 µg/ml dilution.



ARG43277 anti-MEX3A antibody WB image

Western blot: 25 µg of Human brain (positive control) and Human placenta (negative control) lysates stained with ARG43277 anti-MEX3A antibody at 1 µg/ml dilution.