

ARG43165 anti-FRMD6 / Willin antibody

Package: 100 µl
Store at: -20°C

Summary

Product Description	Rabbit Polyclonal antibody recognizes FRMD6 / Willin
Tested Reactivity	Hu, Ms, Rat
Tested Application	ICC/IF, IHC-P, WB
Host	Rabbit
Clonality	Polyclonal
Isotype	IgG
Target Name	FRMD6 / Willin
Species	Human
Immunogen	Recombinant fusion protein corresponding to aa. 405-614 of Human FRMD6 / Willin (NP_689543.1).
Conjugation	Un-conjugated
Alternate Names	FERM domain-containing protein 6; Willin; c14_5320; C14orf31; EX1

Application Instructions

Application table	Application	Dilution
	ICC/IF	1:50 - 1:200
	IHC-P	1:50 - 1:200
	WB	1:1000 - 1:2000

Application Note * The dilutions indicate recommended starting dilutions and the optimal dilutions or concentrations should be determined by the scientist.

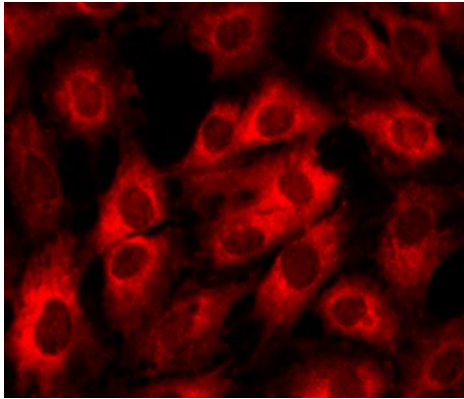
Properties

Form	Liquid
Purification	Affinity purified.
Buffer	PBS (pH 7.3), 0.02% Sodium azide and 50% Glycerol.
Preservative	0.02% Sodium azide
Stabilizer	50% Glycerol
Storage instruction	For continuous use, store undiluted antibody at 2-8°C for up to a week. For long-term storage, aliquot and store at -20°C. Storage in frost free freezers is not recommended. Avoid repeated freeze/thaw cycles. Suggest spin the vial prior to opening. The antibody solution should be gently mixed before use.
Note	For laboratory research only, not for drug, diagnostic or other use.

Bioinformation

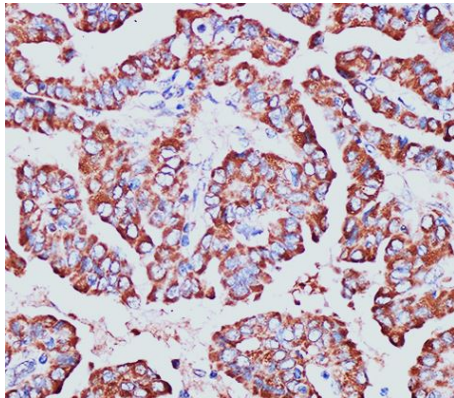
Gene Symbol	FRMD6
Gene Full Name	FERM domain containing 6
Calculated Mw	72 kDa
Cellular Localization	Cytoplasm. Cell membrane; Peripheral membrane protein; Cytoplasmic side. Note=Can colocalize with actin. [UniProt]

Images



ARG43165 anti-FRMD6 / Willin antibody ICC/IF image

Immunofluorescence: C6 cells stained with ARG43165 anti-FRMD6 / Willin antibody at 1:100 dilution.



ARG43165 anti-FRMD6 / Willin antibody IHC-P image

Immunohistochemistry: Paraffin-embedded Human thyroid cancer tissue stained with ARG43165 anti-FRMD6 / Willin antibody at 1:100 dilution.