

ARG43164 anti-CA2 / Carbonic Anhydrase 2 antibody

Package: 50 µl
Store at: -20°C

Summary

Product Description	Rabbit Polyclonal antibody recognizes CA2 / Carbonic Anhydrase 2
Tested Reactivity	Hu, Ms, Rat
Tested Application	IHC-P, WB
Host	Rabbit
Clonality	Polyclonal
Isotype	IgG
Target Name	CA2 / Carbonic Anhydrase 2
Species	Human
Immunogen	Synthetic peptide derived from Human CA2 / Carbonic Anhydrase 2.
Conjugation	Un-conjugated
Alternate Names	Carbonic anhydrase C; EC 4.2.1.1; Car2; Carbonate dehydratase II; CA-II; Carbonic anhydrase II; CAC; HEL-76; Carbonic anhydrase 2; CAII

Application Instructions

Application table	Application	Dilution
	IHC-P	1:50 - 1:200
	WB	1:500 - 1:2000
Application Note	* The dilutions indicate recommended starting dilutions and the optimal dilutions or concentrations should be determined by the scientist.	
Positive Control	293T	
Observed Size	~ 29 kDa	

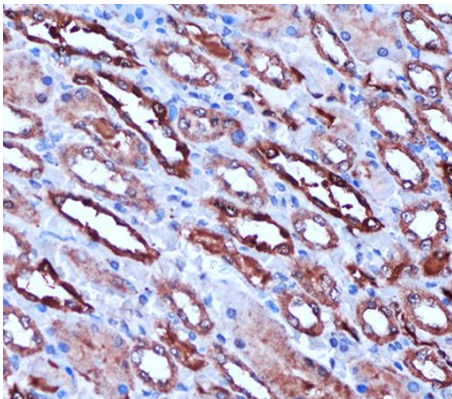
Properties

Form	Liquid
Purification	Affinity purified.
Buffer	PBS (pH 7.3), 0.02% Sodium azide, 50% Glycerol and 0.05% BSA.
Preservative	0.02% Sodium azide
Stabilizer	50% Glycerol and 0.05% BSA
Storage instruction	For continuous use, store undiluted antibody at 2-8°C for up to a week. For long-term storage, aliquot and store at -20°C. Storage in frost free freezers is not recommended. Avoid repeated freeze/thaw cycles. Suggest spin the vial prior to opening. The antibody solution should be gently mixed before use.
Note	For laboratory research only, not for drug, diagnostic or other use.

Bioinformation

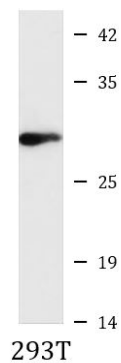
Gene Symbol	CA2
Gene Full Name	carbonic anhydrase II
Background	The protein encoded by this gene is one of several isozymes of carbonic anhydrase, which catalyzes reversible hydration of carbon dioxide. Defects in this enzyme are associated with osteopetrosis and renal tubular acidosis. Two transcript variants encoding different isoforms have been found for this gene. [provided by RefSeq, Jun 2014]
Function	Essential for bone resorption and osteoclast differentiation (By similarity). Reversible hydration of carbon dioxide. Can hydrate cyanamide to urea. Involved in the regulation of fluid secretion into the anterior chamber of the eye. Contributes to intracellular pH regulation in the duodenal upper villous epithelium during proton-coupled peptide absorption. Stimulates the chloride-bicarbonate exchange activity of SLC26A6. [UniProt]
Calculated Mw	29 kDa
Cellular Localization	Cytoplasm. Cell membrane. Note=Colocalized with SLC26A6 at the surface of the cell membrane in order to form a bicarbonate transport metabolon. Displaced from the cytosolic surface of the cell membrane by PKC in phorbol myristate acetate (PMA)-induced cells. [UniProt]

Images



ARG43164 anti-CA2 / Carbonic Anhydrase 2 antibody IHC-P image

Immunohistochemistry: Paraffin-embedded Rat kidney tissue stained with ARG43164 anti-CA2 / Carbonic Anhydrase 2 antibody at 1:100 dilution.



ARG43164 anti-CA2 / Carbonic Anhydrase 2 antibody WB image

Western blot: 25 µg of 293T cell lysate stained with ARG43164 anti-CA2 / Carbonic Anhydrase 2 antibody at 1:1000 dilution.