

ARG43140 anti-NADH2 / MT-ND2 antibody

Package: 50 µg
Store at: -20°C

Summary

Product Description	Rabbit Polyclonal antibody recognizes NADH2 / MT-ND2
Tested Reactivity	Ms, Rat
Tested Application	FACS, WB
Host	Rabbit
Clonality	Polyclonal
Isotype	IgG
Target Name	NADH2 / MT-ND2
Species	Rat
Immunogen	Synthetic peptide corresponding to a sequence of Rat NADH2 / MT-ND2. (LEMSLLAIPLLANKKSPRS)
Conjugation	Un-conjugated
Alternate Names	NADH-ubiquinone oxidoreductase chain 2; ND2; MTND2; EC 1.6.5.3; NADH dehydrogenase subunit 2

Application Instructions

Application table	Application	Dilution
	FACS	1:150 - 1:500
	WB	1:500 - 1:2000
Application Note	* The dilutions indicate recommended starting dilutions and the optimal dilutions or concentrations should be determined by the scientist.	
Observed Size	~ 38 kDa	

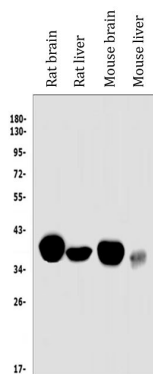
Properties

Form	Liquid
Purification	Immunogen affinity purified.
Buffer	0.2% Na ₂ HPO ₄ , 0.9% NaCl, 0.05% Sodium azide and 4% Trehalose.
Preservative	0.05% Sodium azide
Stabilizer	4% Trehalose
Concentration	0.5 mg/ml
Storage instruction	For continuous use, store undiluted antibody at 2-8°C for up to a week. For long-term storage, aliquot and store at -20°C or below. Storage in frost free freezers is not recommended. Avoid repeated freeze/thaw cycles. Suggest spin the vial prior to opening. The antibody solution should be gently mixed before use.
Note	For laboratory research only, not for drug, diagnostic or other use.

Bioinformation

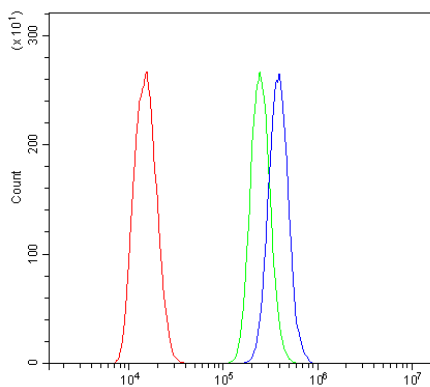
Gene Symbol	MT-ND2
Gene Full Name	mitochondrially encoded NADH dehydrogenase 2
Function	Core subunit of the mitochondrial membrane respiratory chain NADH dehydrogenase (Complex I) that is believed to belong to the minimal assembly required for catalysis. Complex I functions in the transfer of electrons from NADH to the respiratory chain. The immediate electron acceptor for the enzyme is believed to be ubiquinone (By similarity). [UniProt]
Calculated Mw	39 kDa
Cellular Localization	Mitochondrion inner membrane; Multi-pass membrane protein. [UniProt]

Images



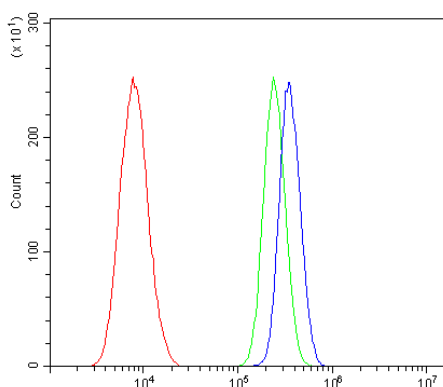
ARG43140 anti-NADH2 / MT-ND2 antibody WB image

Western blot: 50 µg of sample under reducing conditions. Rat brain, Rat liver, Mouse brain and Mouse liver lysates stained with ARG43140 anti-NADH2 / MT-ND2 antibody at 0.5 µg/ml dilution, overnight at 4°C.



ARG43140 anti-NADH2 / MT-ND2 antibody FACS image

Flow Cytometry: ANA-1 cells were blocked with 10% normal goat serum and then stained with ARG43140 anti-NADH2 / MT-ND2 antibody (blue) at 1 µg/10⁶ cells for 30 min at 20°C, followed by incubation with DyLight[®]488 labelled secondary antibody. Isotype control antibody (green) was rabbit IgG (1 µg/10⁶ cells) used under the same conditions. Unlabelled sample (red) was also used as a control.



ARG43140 anti-NADH2 / MT-ND2 antibody FACS image

Flow Cytometry: NRK cells were blocked with 10% normal goat serum and then stained with ARG43140 anti-NADH2 / MT-ND2 antibody (blue) at 1 µg/10⁶ cells for 30 min at 20°C, followed by incubation with DyLight[®]488 labelled secondary antibody. Isotype control antibody (green) was rabbit IgG (1 µg/10⁶ cells) used under the same conditions. Unlabelled sample (red) was also used as a control.