

ARG43132 anti-LRTOMT antibody

Package: 50 µg
Store at: -20°C

Summary

Product Description	Rabbit Polyclonal antibody recognizes LRTOMT
Tested Reactivity	Hu, Ms, Rat
Tested Application	IHC-P, WB
Host	Rabbit
Clonality	Polyclonal
Isotype	IgG
Target Name	LRTOMT
Species	Human
Immunogen	Synthetic peptide corresponding to a sequence of Human LRTOMT. (RLTVERDPRTAAVAEKLIRLAGFDEHMVEL)
Conjugation	Un-conjugated
Alternate Names	Protein LRTOMT1; LRRC51; CFAP111; DFNB63; Leucine-rich repeat-containing protein 51

Application Instructions

Application table	Application	Dilution
	IHC-P	1:200 - 1:1000
	WB	1:500 - 1:2000
Application Note	IHC-P: Antigen Retrieval: Heat mediation was performed in Citrate buffer (pH 6.0) for 20 min. * The dilutions indicate recommended starting dilutions and the optimal dilutions or concentrations should be determined by the scientist.	
Observed Size	~ 27 kDa	

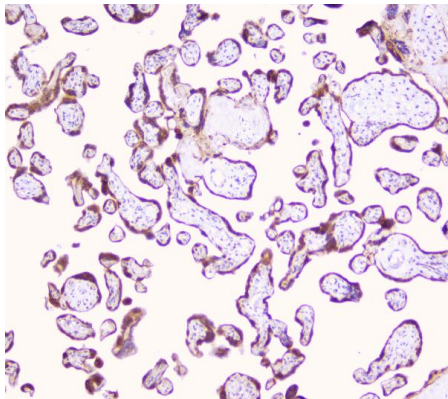
Properties

Form	Liquid
Purification	Immunogen affinity purified.
Buffer	0.2% Na ₂ HPO ₄ , 0.9% NaCl, 0.05% Sodium azide and 4% Trehalose.
Preservative	0.05% Sodium azide
Stabilizer	4% Trehalose
Concentration	0.5 mg/ml
Storage instruction	For continuous use, store undiluted antibody at 2-8°C for up to a week. For long-term storage, aliquot and store at -20°C or below. Storage in frost free freezers is not recommended. Avoid repeated freeze/thaw cycles. Suggest spin the vial prior to opening. The antibody solution should be gently mixed before use.

Bioinformation

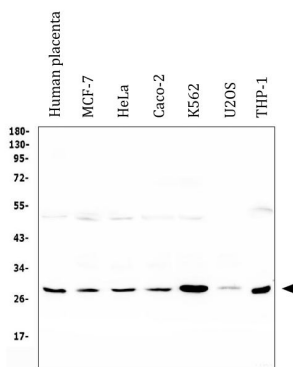
Gene Symbol	LRTOMT
Gene Full Name	leucine rich transmembrane and O-methyltransferase domain containing
Background	<p>This gene has evolved in primates as a fusion of two ancestral neighboring genes, <i>Lrrc51</i> and <i>Tomt</i>, which exist as two independent genes in rodents. The fusion gene contains some shared exons, but encodes structurally unrelated proteins, LRTOMT1 and LRTOMT2. Those variants that utilize the more centromere-proximal 3' terminal exon (short transcript form) encode LRTOMT1, while those variants that use a more centromere-distal 3' terminal exon (long transcript form) encode the LRTOMT2 protein. There is a small region within one of the exons of this gene that contains overlapping alternate reading frames for both LRTOMT1 and LRTOMT2. LRTOMT1 shares similarity with the protein encoded by mouse <i>Lrrc51</i>, while LRTOMT2 shares similarity with the protein encoded by mouse <i>Tomt</i>. Alternative splicing results in multiple transcript variants, encoding different isoforms of both LRTOMT1 and LRTOMT2. The LRTOMT1 protein is a leucine-rich repeat-containing protein, while the LRTOMT2 protein is a catechol-O-methyltransferase that catalyzes the transfer of a methyl group from S-adenosyl-L-methionine to a hydroxyl group of catechols and is essential for auditory and vestibular function. Mutations in this gene have been associated with nonsyndromic deafness. [provided by RefSeq, Nov 2017]</p>
Calculated Mw	22 kDa
Cellular Localization	Cytoplasm. [UniProt]

Images



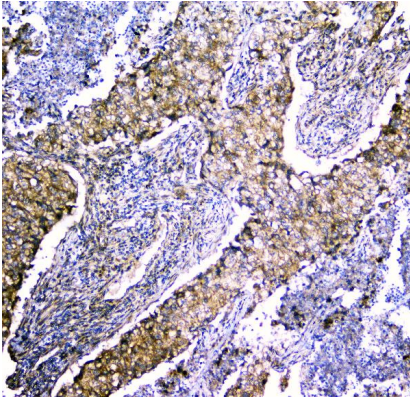
ARG43132 anti-LRTOMT antibody IHC-P image

Immunohistochemistry: Paraffin-embedded Human placenta tissue. Antigen Retrieval: Heat mediation was performed in Citrate buffer (pH 6.0) for 20 min. The tissue section was blocked with 10% goat serum. The tissue section was then stained with ARG43132 anti-LRTOMT antibody at 1 µg/ml dilution, overnight at 4°C.



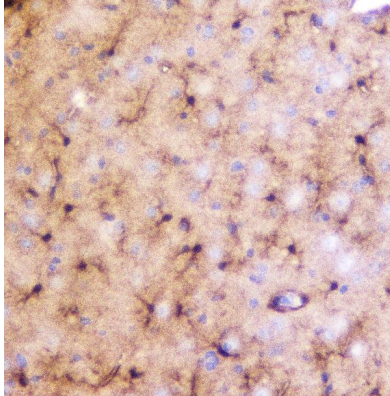
ARG43132 anti-LRTOMT antibody WB image

Western blot: 50 µg of sample under reducing conditions. Human placenta, MCF-7, HeLa, Caco-2, K562, U2OS and THP-1 whole cell lysates stained with ARG43132 anti-LRTOMT antibody at 0.5 µg/ml dilution, overnight at 4°C.



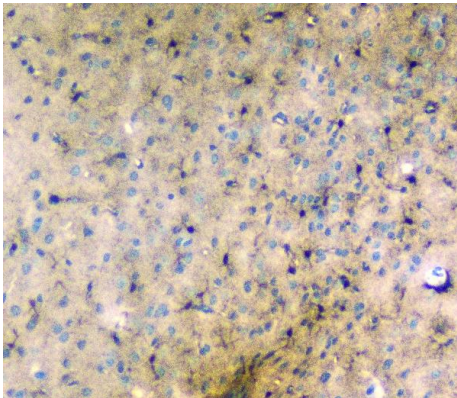
ARG43132 anti-LRTOMT antibody IHC-P image

Immunohistochemistry: Paraffin-embedded Human lung cancer tissue. Antigen Retrieval: Heat mediation was performed in Citrate buffer (pH 6.0) for 20 min. The tissue section was blocked with 10% goat serum. The tissue section was then stained with ARG43132 anti-LRTOMT antibody at 1 $\mu\text{g}/\text{ml}$ dilution, overnight at 4°C.



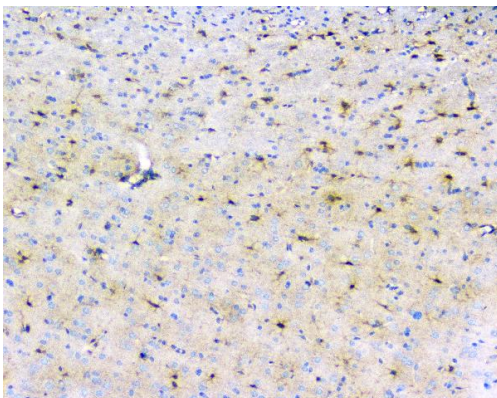
ARG43132 anti-LRTOMT antibody IHC-P image

Immunohistochemistry: Paraffin-embedded Mouse brain tissue. Antigen Retrieval: Heat mediation was performed in Citrate buffer (pH 6.0) for 20 min. The tissue section was blocked with 10% goat serum. The tissue section was then stained with ARG43132 anti-LRTOMT antibody at 1 $\mu\text{g}/\text{ml}$ dilution, overnight at 4°C.



ARG43132 anti-LRTOMT antibody IHC-P image

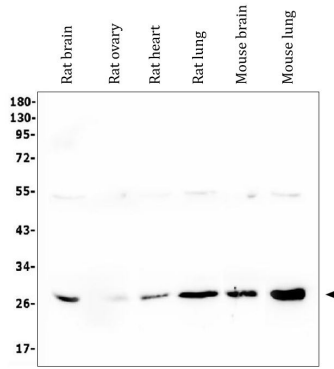
Immunohistochemistry: Paraffin-embedded Mouse brain tissue. Antigen Retrieval: Heat mediation was performed in Citrate buffer (pH 6.0) for 20 min. The tissue section was blocked with 10% goat serum. The tissue section was then stained with ARG43132 anti-LRTOMT antibody at 1 $\mu\text{g}/\text{ml}$ dilution, overnight at 4°C.



ARG43132 anti-LRTOMT antibody IHC-P image

Immunohistochemistry: Paraffin-embedded Rat brain tissue. Antigen Retrieval: Heat mediation was performed in Citrate buffer (pH 6.0) for 20 min. The tissue section was blocked with 10% goat serum. The tissue section was then stained with ARG43132 anti-LRTOMT antibody at 1 $\mu\text{g}/\text{ml}$ dilution, overnight at 4°C.

ARG43132 anti-LRTOMT antibody WB image



Western blot: 50 μ g of sample under reducing conditions. Rat brain, Rat ovary, Rat heart, Rat lung, Mouse brain and Mouse lung lysates stained with ARG43132 anti-LRTOMT antibody at 0.5 μ g/ml dilution, overnight at 4°C.