

ARG43117 anti-Cathepsin K antibody

Package: 50 µg
Store at: -20°C

Summary

Product Description	Rabbit Polyclonal antibody recognizes Cathepsin K
Tested Reactivity	Hu
Tested Application	IHC-P, WB
Host	Rabbit
Clonality	Polyclonal
Isotype	IgG
Target Name	Cathepsin K
Species	Human
Immunogen	Recombinant protein corresponding to A115-M329 of Human Cathepsin K.
Conjugation	Un-conjugated
Alternate Names	Cathepsin X; CTSO2; CTSO; PYCD; Cathepsin O; PKND; EC 3.4.22.38; Cathepsin K; Cathepsin O2; CTSO1; CTSO2

Application Instructions

Application table	Application	Dilution
	IHC-P	1:200 - 1:1000
	WB	1:500 - 1:2000
Application Note	* The dilutions indicate recommended starting dilutions and the optimal dilutions or concentrations should be determined by the scientist.	
Positive Control	HeLa and 22Rv1	
Observed Size	~ 45 kDa	

Properties

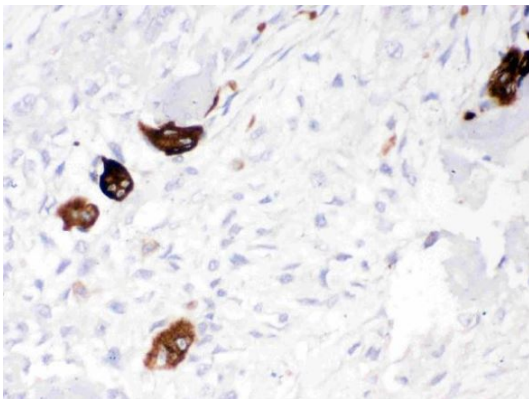
Form	Liquid
Purification	Affinity purification with immunogen.
Buffer	0.2% Na ₂ HPO ₄ , 0.9% NaCl, 0.05% Sodium azide and 5% BSA.
Preservative	0.05% Sodium azide
Stabilizer	5% BSA
Concentration	0.5 mg/ml
Storage instruction	For continuous use, store undiluted antibody at 2-8°C for up to a week. For long-term storage, aliquot and store at -20°C or below. Storage in frost free freezers is not recommended. Avoid repeated freeze/thaw cycles. Suggest spin the vial prior to opening. The antibody solution should be gently mixed before use.

Note For laboratory research only, not for drug, diagnostic or other use.

Bioinformation

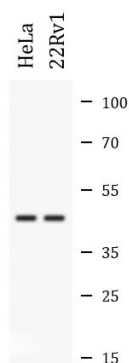
Gene Symbol	CTSK
Gene Full Name	cathepsin K
Background	The protein encoded by this gene is a lysosomal cysteine proteinase involved in bone remodeling and resorption. This protein, which is a member of the peptidase C1 protein family, is predominantly expressed in osteoclasts. However, the encoded protein is also expressed in a significant fraction of human breast cancers, where it could contribute to tumor invasiveness. Mutations in this gene are the cause of pycnodysostosis, an autosomal recessive disease characterized by osteosclerosis and short stature. [provided by RefSeq, Apr 2013]
Function	Closely involved in osteoclastic bone resorption and may participate partially in the disorder of bone remodeling. Displays potent endoprotease activity against fibrinogen at acid pH. May play an important role in extracellular matrix degradation. [UniProt]
Calculated Mw	37 kDa
Cellular Localization	Lysosome. [UniProt]

Images



ARG43117 anti-Cathepsin K antibody IHC-P image

Immunohistochemistry: Paraffin-embedded Human osteosarcoma tissue stained with ARG43117 anti-Cathepsin K antibody at 1 µg/ml dilution.



ARG43117 anti-Cathepsin K antibody WB image

Western blot: HeLa and 22Rv1 whole cell lysates stained with ARG43117 anti-Cathepsin K antibody at 0.5 µg/ml dilution.