

ARG43105 anti-MTDH / AEG1 antibody

Package: 100 µl
Store at: -20°C

Summary

Product Description	Mouse Monoclonal antibody recognizes MTDH / AEG1
Tested Reactivity	Hu
Tested Application	FACS, IHC-P, WB
Host	Mouse
Clonality	Monoclonal
Isotype	IgG1
Target Name	MTDH / AEG1
Species	Human
Immunogen	Purified recombinant fragment of Human MTDH / AEG1.
Conjugation	Un-conjugated
Alternate Names	3D3/LYRIC; AEG-1; Metastasis adhesion protein; 3D3; LYRIC/3D3; AEG1; Protein LYRIC; Lysine-rich CEACAM1 co-isolated protein; LYRIC; Metadherin; Astrocyte elevated gene-1 protein

Application Instructions

Application table	Application	Dilution
	FACS	1:200 - 1:400
	IHC-P	1:200 - 1:1000
	WB	1:500 - 1:2000
Application Note	* The dilutions indicate recommended starting dilutions and the optimal dilutions or concentrations should be determined by the scientist.	
Positive Control	MCF7	
Observed Size	~ 73 kDa	

Properties

Form	Liquid
Purification	Unpurified
Buffer	Ascitic fluid and 0.03% Sodium azide.
Preservative	0.03% Sodium azide
Storage instruction	For continuous use, store undiluted antibody at 2-8°C for up to a week. For long-term storage, aliquot and store at -20°C or below. Storage in frost free freezers is not recommended. Avoid repeated freeze/thaw cycles. Suggest spin the vial prior to opening. The antibody solution should be gently mixed before use.

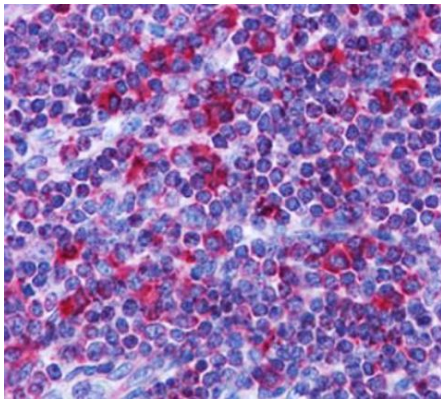
Note

For laboratory research only, not for drug, diagnostic or other use.

Bioinformation

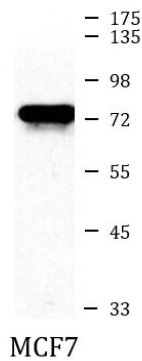
Gene Symbol	MTDH
Gene Full Name	metadherin
Function	Downregulates SLC1A2/EAT2 promoter activity when expressed ectopically. Activates the nuclear factor kappa-B (NF-kappa-B) transcription factor. Promotes anchorage-independent growth of immortalized melanocytes and astrocytes which is a key component in tumor cell expansion. Promotes lung metastasis and also has an effect on bone and brain metastasis, possibly by enhancing the seeding of tumor cells to the target organ endothelium. Induces chemoresistance. [UniProt]
Calculated Mw	64 kDa
Cellular Localization	Endoplasmic reticulum membrane; Single-pass membrane protein. Nucleus membrane; Single-pass membrane protein. Cell junction, tight junction. Nucleus, nucleolus. Cytoplasm, perinuclear region. Note=In epithelial cells, recruited to tight junctions (TJ) during the maturation of the TJ complexes. A nucleolar staining may be due to nuclear targeting of an isoform lacking the transmembrane domain (By similarity). TNF-alpha causes translocation from the cytoplasm to the nucleus. [UniProt]

Images



ARG43105 anti-MTDH / AEG1 antibody IHC-P image

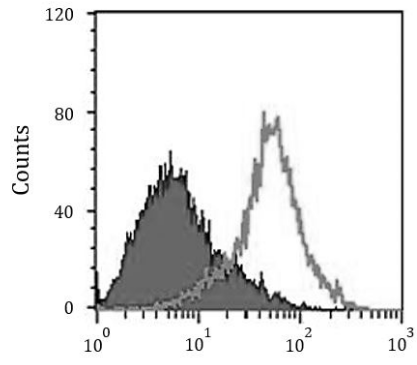
Immunohistochemistry: Paraffin-embedded Human liver tissue stained with ARG43105 anti-MTDH / AEG1 antibody.



ARG43105 anti-MTDH / AEG1 antibody WB image

Western blot: MCF7 cell lysate stained with ARG43105 anti-MTDH / AEG1 antibody at 1:5000 dilution.

ARG43105 anti-MTDH / AEG1 antibody FACS image



Flow Cytometry: HeLa cells stained with ARG43105 anti-MTDH / AEG1 antibody (right histogram) and negative control (left histogram).