

**ARG43095**  
**anti-SRCIN1 / p140Cap antibody**Package: 50 µg  
Store at: -20°C

### Summary

Product Description	Rabbit Polyclonal antibody recognizes SRCIN1 / p140Cap
Tested Reactivity	Hu, Ms, Rat
Tested Application	FACS, IHC-P, WB
Host	Rabbit
Clonality	Polyclonal
Isotype	IgG
Target Name	SRCIN1 / p140Cap
Species	Human
Immunogen	Recombinant protein corresponding to E189-E287 of Human SRCIN1 / p140Cap.
Conjugation	Un-conjugated
Alternate Names	p130Cas-associated protein; SRC kinase signaling inhibitor 1; SNAP-25-interacting protein; p140Cap; SNIP; P140

### Application Instructions

Application table	Application	Dilution
	FACS	1:150 - 1:500
	IHC-P	1:200 - 1:1000
	WB	1:500 - 1:2000

**Application Note** IHC-P: Antigen Retrieval: Heat mediation was performed in Citrate buffer (pH 6.0) for 20 min.  
\* The dilutions indicate recommended starting dilutions and the optimal dilutions or concentrations should be determined by the scientist.

**Observed Size** ~ 140 kDa

### Properties

Form	Liquid
Purification	Affinity purification with immunogen.
Buffer	0.2% Na <sub>2</sub> HPO <sub>4</sub> , 0.9% NaCl, 0.05% Sodium azide and 4% Trehalose.
Preservative	0.05% Sodium azide
Stabilizer	4% Trehalose
Concentration	0.5 mg/ml
Storage instruction	For continuous use, store undiluted antibody at 2-8°C for up to a week. For long-term storage, aliquot and store at -20°C or below. Storage in frost free freezers is not recommended. Avoid repeated freeze/thaw cycles. Suggest spin the vial prior to opening. The antibody solution should be gently mixed

before use.

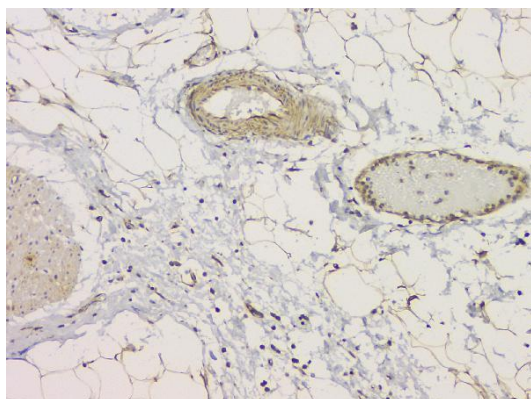
Note

For laboratory research only, not for drug, diagnostic or other use.

## Bioinformation

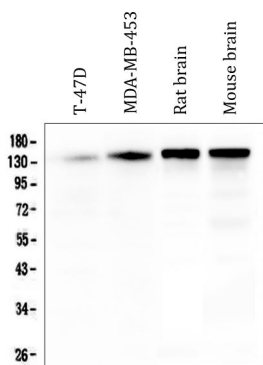
Gene Symbol	SRCIN1
Gene Full Name	SRC kinase signaling inhibitor 1
Function	Acts as a negative regulator of SRC by activating CSK which inhibits SRC activity and downstream signaling, leading to impaired cell spreading and migration. Regulates dendritic spine morphology. Involved in calcium-dependent exocytosis. May play a role in neurotransmitter release or synapse maintenance. [UniProt]
Calculated Mw	127 kDa
PTM	Tyrosine-phosphorylated in response to EGF and to cell adhesion to integrin ligands. [UniProt]
Cellular Localization	Cytoplasm, cytoskeleton. Cell projection, axon, dendrite. Cell junction, synapse, postsynaptic cell membrane, postsynaptic density. Note=Localized to the perinuclear region, lamellopodia, cortical actin and actin stress fibers but not to focal adhesions. Strongly expressed in axons and dendrites of the CA1 and CA3 hippocampal regions and of the dentate gyrus. Detected in both presynapses and postsynapses and in postsynaptic density fractions. [UniProt]

## Images



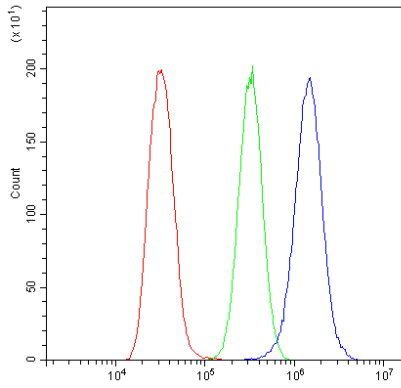
ARG43095 anti-SRCIN1 / p140Cap antibody IHC-P image

Immunohistochemistry: Paraffin-embedded Human appendicitis tissue. Antigen Retrieval: Heat mediation was performed in Citrate buffer (pH 6.0) for 20 min. The tissue section was blocked with 10% goat serum. The tissue section was then stained with ARG43095 anti-SRCIN1 / p140Cap antibody at 1 µg/ml dilution, overnight at 4°C.



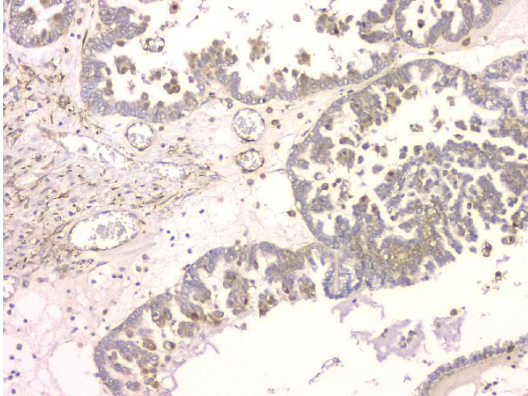
ARG43095 anti-SRCIN1 / p140Cap antibody WB image

Western blot: 50 µg of sample under reducing conditions. T-47D, MDA-MB-453, Rat brain and Mouse brain lysates stained with ARG43095 anti-SRCIN1 / p140Cap antibody at 0.5 µg/ml dilution, overnight at 4°C.



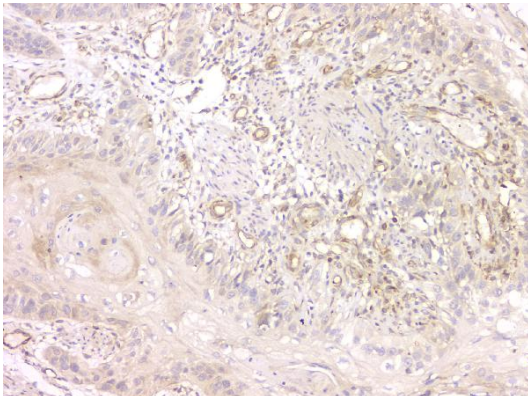
#### ARG43095 anti-SRCIN1 / p140Cap antibody FACS image

Flow Cytometry: U2OS cells were blocked with 10% normal goat serum and then stained with ARG43095 anti-SRCIN1 / p140Cap antibody (blue) at 1  $\mu\text{g}/10^6$  cells for 30 min at 20°C, followed by incubation with DyLight®488 labelled secondary antibody. Isotype control antibody (green) was rabbit IgG (1  $\mu\text{g}/10^6$  cells) used under the same conditions. Unlabelled sample (red) was also used as a control.



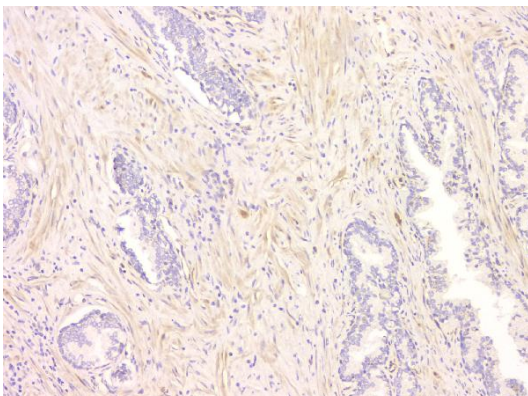
#### ARG43095 anti-SRCIN1 / p140Cap antibody IHC-P image

Immunohistochemistry: Paraffin-embedded Human ovary cancer tissue. Antigen Retrieval: Heat mediation was performed in Citrate buffer (pH 6.0) for 20 min. The tissue section was blocked with 10% goat serum. The tissue section was then stained with ARG43095 anti-SRCIN1 / p140Cap antibody at 1  $\mu\text{g}/\text{ml}$  dilution, overnight at 4°C.



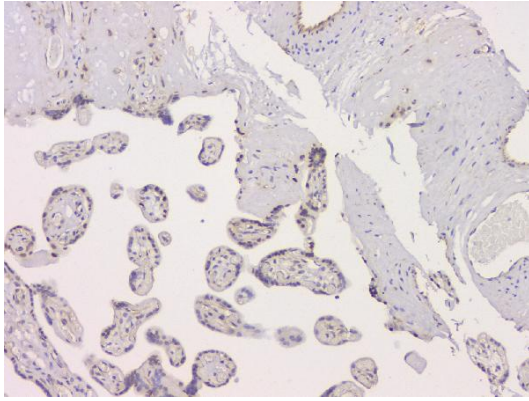
#### ARG43095 anti-SRCIN1 / p140Cap antibody IHC-P image

Immunohistochemistry: Paraffin-embedded Human oesophagus squama cancer tissue. Antigen Retrieval: Heat mediation was performed in Citrate buffer (pH 6.0) for 20 min. The tissue section was blocked with 10% goat serum. The tissue section was then stained with ARG43095 anti-SRCIN1 / p140Cap antibody at 1  $\mu\text{g}/\text{ml}$  dilution, overnight at 4°C.



#### ARG43095 anti-SRCIN1 / p140Cap antibody IHC-P image

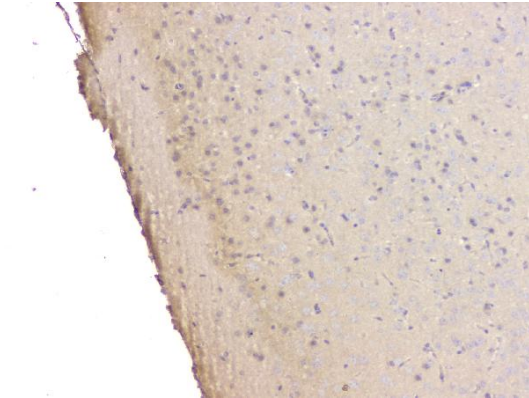
Immunohistochemistry: Paraffin-embedded Human ovary cancer tissue. Antigen Retrieval: Heat mediation was performed in Citrate buffer (pH 6.0) for 20 min. The tissue section was blocked with 10% goat serum. The tissue section was then stained with ARG43095 anti-SRCIN1 / p140Cap antibody at 1  $\mu\text{g}/\text{ml}$  dilution, overnight at 4°C.



**ARG43095 anti-SRCIN1 / p140Cap antibody IHC-P image**

Immunohistochemistry: Paraffin-embedded Human placenta tissue. Antigen Retrieval: Heat mediation was performed in Citrate buffer (pH 6.0) for 20 min. The tissue section was blocked with 10% goat serum. The tissue section was then stained with ARG43095 anti-SRCIN1 / p140Cap antibody at 1 µg/ml dilution, overnight at 4°C.

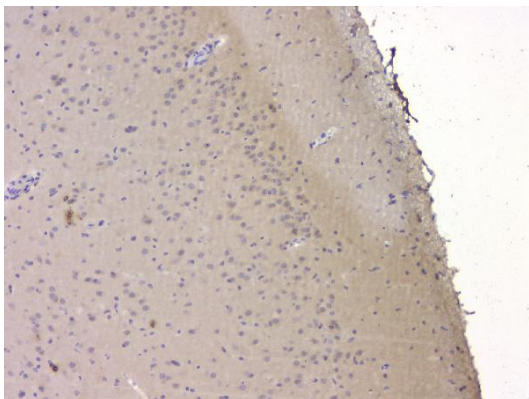
---



**ARG43095 anti-SRCIN1 / p140Cap antibody IHC-P image**

Immunohistochemistry: Paraffin-embedded Mouse brain tissue. Antigen Retrieval: Heat mediation was performed in Citrate buffer (pH 6.0) for 20 min. The tissue section was blocked with 10% goat serum. The tissue section was then stained with ARG43095 anti-SRCIN1 / p140Cap antibody at 1 µg/ml dilution, overnight at 4°C.

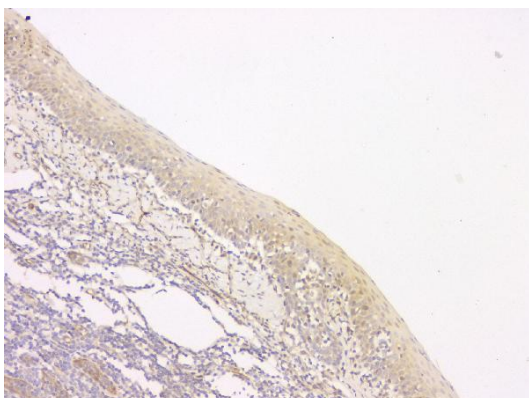
---



**ARG43095 anti-SRCIN1 / p140Cap antibody IHC-P image**

Immunohistochemistry: Paraffin-embedded Rat brain tissue. Antigen Retrieval: Heat mediation was performed in Citrate buffer (pH 6.0) for 20 min. The tissue section was blocked with 10% goat serum. The tissue section was then stained with ARG43095 anti-SRCIN1 / p140Cap antibody at 1 µg/ml dilution, overnight at 4°C.

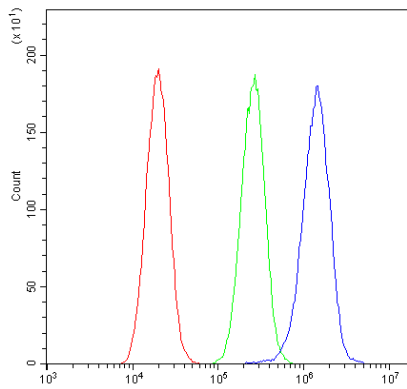
---



**ARG43095 anti-SRCIN1 / p140Cap antibody IHC-P image**

Immunohistochemistry: Paraffin-embedded Human tonsil tissue. Antigen Retrieval: Heat mediation was performed in Citrate buffer (pH 6.0) for 20 min. The tissue section was blocked with 10% goat serum. The tissue section was then stained with ARG43095 anti-SRCIN1 / p140Cap antibody at 1 µg/ml dilution, overnight at 4°C.

---



#### ARG43095 anti-SRCIN1 / p140Cap antibody FACS image

Flow Cytometry: A549 cells were blocked with 10% normal goat serum and then stained with ARG43095 anti-SRCIN1 / p140Cap antibody (blue) at 1 µg/10<sup>6</sup> cells for 30 min at 20°C, followed by incubation with DyLight®488 labelled secondary antibody. Isotype control antibody (green) was rabbit IgG (1 µg/10<sup>6</sup> cells) used under the same conditions. Unlabelled sample (red) was also used as a control.