

## ARG43089 anti-PCDH15 antibody

Package: 50 µg  
Store at: -20°C

### Summary

Product Description	Rabbit Polyclonal antibody recognizes PCDH15
Tested Reactivity	Hu, Ms, Rat
Tested Application	FACS, IHC-P
Host	Rabbit
Clonality	Polyclonal
Isotype	IgG
Target Name	PCDH15
Species	Human
Immunogen	Synthetic peptide corresponding to a sequence of Human PCDH15. (DLTVYAIDPQTNRAIDRNELFKFLDGGKLLDINKDFQ)
Conjugation	Un-conjugated
Alternate Names	DFNB23; Protocadherin-15; USH1F; CDHR15

### Application Instructions

Application table	Application	Dilution
	FACS	1:150 - 1:500
	IHC-P	1:200 - 1:1000

**Application Note**  
IHC-P: Antigen Retrieval: Heat mediation was performed in Citrate buffer (pH 6.0) for 20 min.  
\* The dilutions indicate recommended starting dilutions and the optimal dilutions or concentrations should be determined by the scientist.

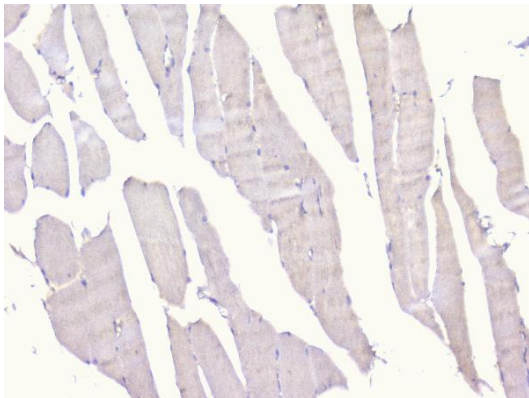
### Properties

Form	Liquid
Purification	Affinity purification with immunogen.
Buffer	0.2% Na <sub>2</sub> HPO <sub>4</sub> , 0.9% NaCl, 0.05% Sodium azide and 4% Trehalose.
Preservative	0.05% Sodium azide
Stabilizer	4% Trehalose
Concentration	0.5 mg/ml
Storage instruction	For continuous use, store undiluted antibody at 2-8°C for up to a week. For long-term storage, aliquot and store at -20°C or below. Storage in frost free freezers is not recommended. Avoid repeated freeze/thaw cycles. Suggest spin the vial prior to opening. The antibody solution should be gently mixed before use.
Note	For laboratory research only, not for drug, diagnostic or other use.

## Bioinformation

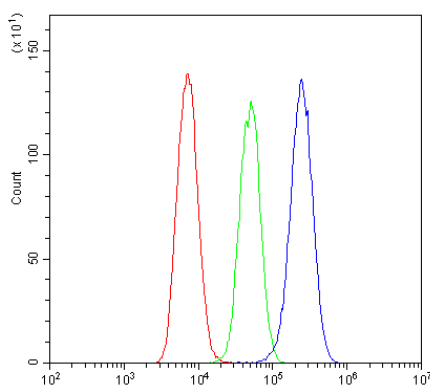
Gene Symbol	PCDH15
Gene Full Name	protocadherin-related 15
Background	This gene is a member of the cadherin superfamily. Family members encode integral membrane proteins that mediate calcium-dependent cell-cell adhesion. It plays an essential role in maintenance of normal retinal and cochlear function. Mutations in this gene result in hearing loss and Usher Syndrome Type IF (USH1F). Extensive alternative splicing resulting in multiple isoforms has been observed in the mouse ortholog. Similar alternatively spliced transcripts are inferred to occur in human, and additional variants are likely to occur. [provided by RefSeq, Dec 2008]
Function	Calcium-dependent cell-adhesion protein. Essential for maintenance of normal retinal and cochlear function. [UniProt]
Calculated Mw	216 kDa
Cellular Localization	Cell membrane; Single-pass type I membrane protein. Note=Efficient localization to the plasma membrane requires the presence of LHFPL5. Isoform 3: Secreted. [UniProt]

## Images



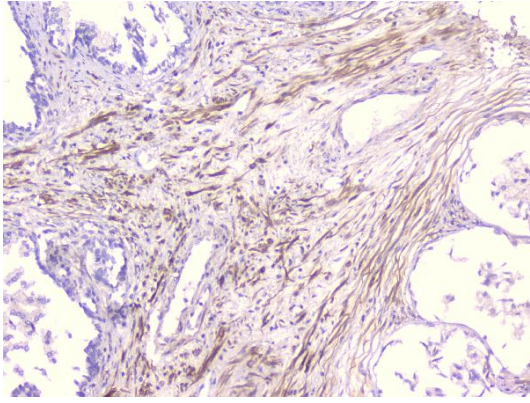
ARG43089 anti-PCDH15 antibody IHC-P image

Immunohistochemistry: Paraffin-embedded Human skeletal muscle tissue. Antigen Retrieval: Heat mediation was performed in Citrate buffer (pH 6.0) for 20 min. The tissue section was blocked with 10% goat serum. The tissue section was then stained with ARG43089 anti-PCDH15 antibody at 1  $\mu\text{g}/\text{ml}$  dilution, overnight at 4°C.



ARG43089 anti-PCDH15 antibody FACS image

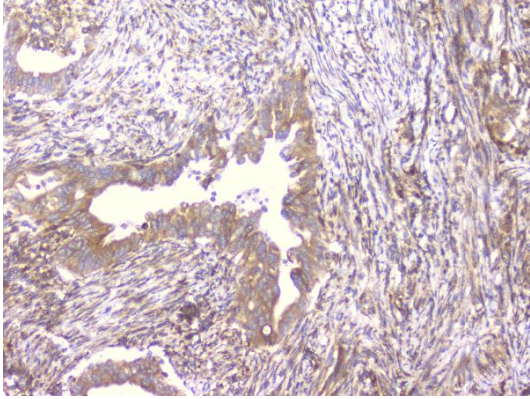
Flow Cytometry: U-87MG cells were blocked with 10% normal goat serum and then stained with ARG43089 anti-PCDH15 antibody (blue) at 1  $\mu\text{g}/10^6$  cells for 30 min at 20°C, followed by incubation with DyLight®488 labelled secondary antibody. Isotype control antibody (green) was rabbit IgG (1  $\mu\text{g}/10^6$  cells) used under the same conditions. Unlabelled sample (red) was also used as a control.



#### ARG43089 anti-PCDH15 antibody IHC-P image

Immunohistochemistry: Paraffin-embedded Human prostatic cancer tissue. Antigen Retrieval: Heat mediation was performed in Citrate buffer (pH 6.0) for 20 min. The tissue section was blocked with 10% goat serum. The tissue section was then stained with ARG43089 anti-PCDH15 antibody at 1  $\mu$ g/ml dilution, overnight at 4°C.

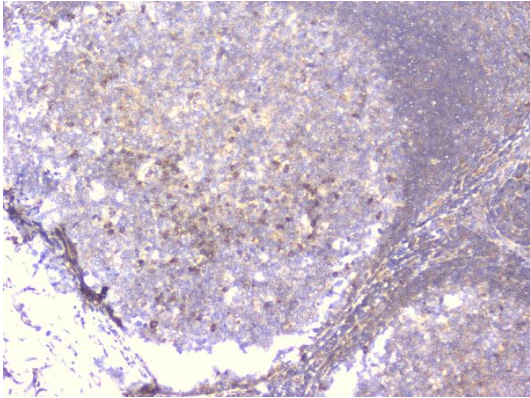
---



#### ARG43089 anti-PCDH15 antibody IHC-P image

Immunohistochemistry: Paraffin-embedded Human rectal cancer tissue. Antigen Retrieval: Heat mediation was performed in Citrate buffer (pH 6.0) for 20 min. The tissue section was blocked with 10% goat serum. The tissue section was then stained with ARG43089 anti-PCDH15 antibody at 1  $\mu$ g/ml dilution, overnight at 4°C.

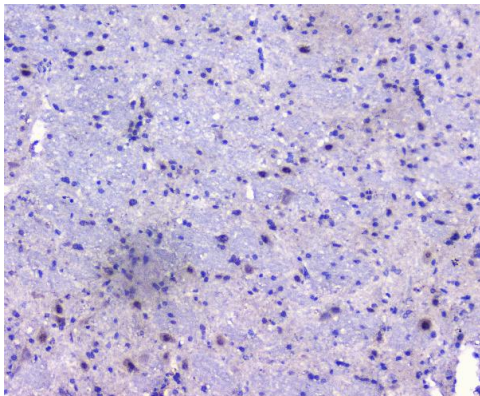
---



#### ARG43089 anti-PCDH15 antibody IHC-P image

Immunohistochemistry: Paraffin-embedded Human tonsil tissue. Antigen Retrieval: Heat mediation was performed in Citrate buffer (pH 6.0) for 20 min. The tissue section was blocked with 10% goat serum. The tissue section was then stained with ARG43089 anti-PCDH15 antibody at 1  $\mu$ g/ml dilution, overnight at 4°C.

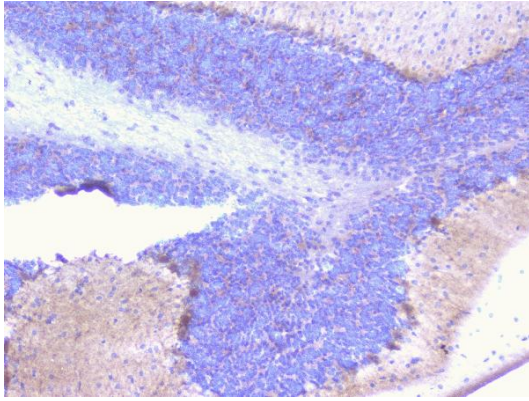
---



#### ARG43089 anti-PCDH15 antibody IHC-P image

Immunohistochemistry: Paraffin-embedded Rat brain tissue. Antigen Retrieval: Heat mediation was performed in Citrate buffer (pH 6.0) for 20 min. The tissue section was blocked with 10% goat serum. The tissue section was then stained with ARG43089 anti-PCDH15 antibody at 1  $\mu$ g/ml dilution, overnight at 4°C.

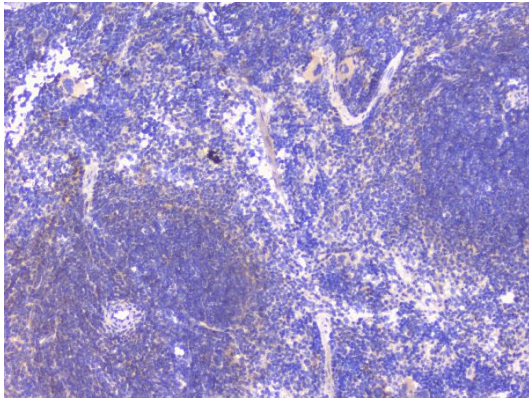
---



**ARG43089 anti-PCDH15 antibody IHC-P image**

Immunohistochemistry: Paraffin-embedded Mouse brain tissue. Antigen Retrieval: Heat mediation was performed in Citrate buffer (pH 6.0) for 20 min. The tissue section was blocked with 10% goat serum. The tissue section was then stained with ARG43089 anti-PCDH15 antibody at 1 µg/ml dilution, overnight at 4°C.

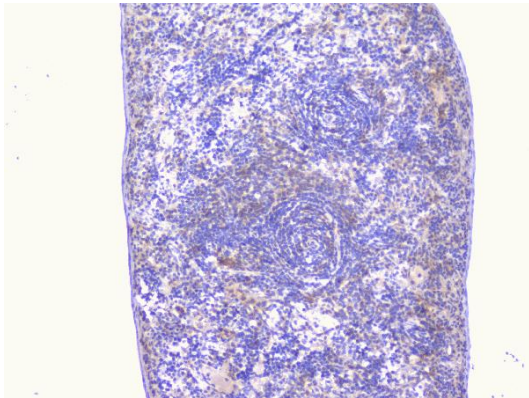
---



**ARG43089 anti-PCDH15 antibody IHC-P image**

Immunohistochemistry: Paraffin-embedded Mouse spleen tissue. Antigen Retrieval: Heat mediation was performed in Citrate buffer (pH 6.0) for 20 min. The tissue section was blocked with 10% goat serum. The tissue section was then stained with ARG43089 anti-PCDH15 antibody at 1 µg/ml dilution, overnight at 4°C.

---



**ARG43089 anti-PCDH15 antibody IHC-P image**

Immunohistochemistry: Paraffin-embedded Rat spleen tissue. Antigen Retrieval: Heat mediation was performed in Citrate buffer (pH 6.0) for 20 min. The tissue section was blocked with 10% goat serum. The tissue section was then stained with ARG43089 anti-PCDH15 antibody at 1 µg/ml dilution, overnight at 4°C.

---