

## ARG43079 anti-BCKDK antibody

Package: 50 µl  
Store at: -20°C

### Summary

Product Description	Rabbit Polyclonal antibody recognizes BCKDK
Tested Reactivity	Hu, Ms, Rat
Tested Application	IHC-P, IP, WB
Host	Rabbit
Clonality	Polyclonal
Isotype	IgG
Target Name	BCKDK
Species	Human
Immunogen	Synthetic peptide corresponding to aa. 21-70 of Human BCKDK.
Conjugation	Un-conjugated
Alternate Names	BCKD-kinase; [3-methyl-2-oxobutanoate dehydrogenase [lipoamide]] kinase, mitochondrial; BDK; Branched-chain alpha-ketoacid dehydrogenase kinase; BCKDHKIN; BCKDKD; EC 2.7.11.4

### Application Instructions

Application table	Application	Dilution
	IHC-P	1:50 - 1:200
	IP	1:50 - 1:100
	WB	1:500 - 1:1000

**Application Note** \* The dilutions indicate recommended starting dilutions and the optimal dilutions or concentrations should be determined by the scientist.

### Properties

Form	Liquid
Purification	Affinity purification with immunogen.
Purity	> 95% (by SDS-PAGE)
Buffer	PBS (pH 7.2), 0.02% Sodium azide and 50% Glycerol.
Preservative	0.02% Sodium azide
Stabilizer	50% Glycerol
Concentration	1 mg/ml
Storage instruction	For continuous use, store undiluted antibody at 2-8°C for up to a week. For long-term storage, aliquot and store at -20°C. Storage in frost free freezers is not recommended. Avoid repeated freeze/thaw cycles. Suggest spin the vial prior to opening. The antibody solution should be gently mixed before use.

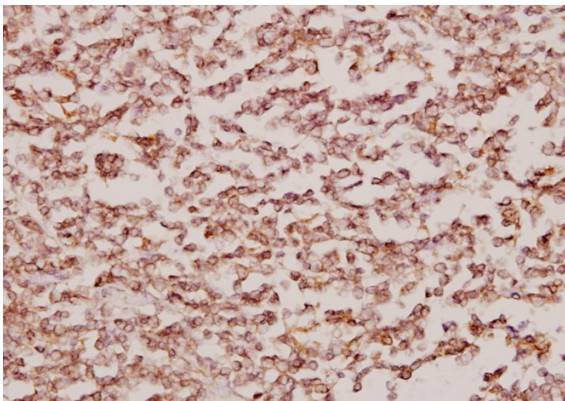
**Note**

For laboratory research only, not for drug, diagnostic or other use.

## Bioinformation

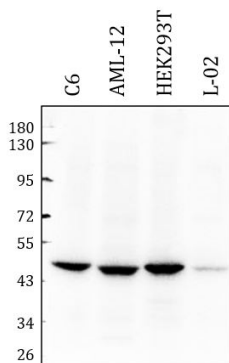
Gene Symbol	BCKDK
Gene Full Name	branched chain ketoacid dehydrogenase kinase
Background	The branched-chain alpha-ketoacid dehydrogenase complex (BCKD) is an important regulator of the valine, leucine, and isoleucine catabolic pathways. The protein encoded by this gene is found in the mitochondrion, where it phosphorylates and inactivates BCKD. Several transcript variants encoding different isoforms have been found for this gene. [provided by RefSeq, Dec 2012]
Function	Catalyzes the phosphorylation and inactivation of the branched-chain alpha-ketoacid dehydrogenase complex, the key regulatory enzyme of the valine, leucine and isoleucine catabolic pathways. Key enzyme that regulate the activity state of the BCKD complex. [UniProt]
Calculated Mw	46 kDa
PTM	Autophosphorylated. [UniProt]
Cellular Localization	Mitochondrion matrix. Mitochondrion. [UniProt]

## Images



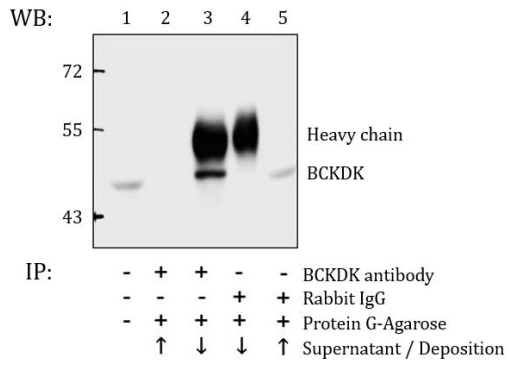
ARG43079 anti-BCKDK antibody IHC-P image

Immunohistochemistry: Paraffin-embedded Human tonsil carcinoma tissue stained with ARG43079 anti-BCKDK antibody at 1:50 dilution.



ARG43079 anti-BCKDK antibody WB image

Western blot: 40 µg of C6, AML-12, HEK293T and L-02 whole cell lysates stained with ARG43079 anti-BCKDK antibody at 1:500 dilution.



### ARG43079 anti-BCKDK antibody IP image

Immunoprecipitation: HEK293T cell lysate using ARG43079 anti-BCKDK antibody (lane 2 and 3) and Nonspecific IgG Control (lane 4 and 5). Lane 1 is 30% input. Western blot was stained with ARG43079 anti-BCKDK antibody.

↑: Supernatant  
↓: Deposition