

ARG43072 anti-BCKDK antibody

Package: 100 µl
Store at: -20°C

Summary

Product Description	Rabbit Polyclonal antibody recognizes BCKDK
Tested Reactivity	Hu, Ms, Rat
Tested Application	WB
Host	Rabbit
Clonality	Polyclonal
Isotype	IgG
Target Name	BCKDK
Species	Human
Immunogen	Synthetic peptide of Human BCKDK.
Conjugation	Un-conjugated
Alternate Names	BCKD-kinase; [3-methyl-2-oxobutanoate dehydrogenase [lipoamide]] kinase, mitochondrial; BDK; Branched-chain alpha-ketoacid dehydrogenase kinase; BCKDHKIN; BCKDKD; EC 2.7.11.4

Application Instructions

Application table	Application	Dilution
	WB	1:1000
Application Note	* The dilutions indicate recommended starting dilutions and the optimal dilutions or concentrations should be determined by the scientist.	
Positive Control	HeLa	

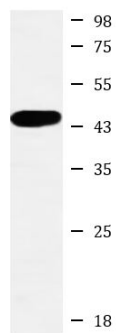
Properties

Form	Liquid
Purification	Affinity purified.
Buffer	50 mM Tris-Glycine (pH 7.4), 150 mM NaCl, 0.01% Sodium azide, 40% Glycerol and 0.05% BSA.
Preservative	0.01% Sodium azide
Stabilizer	40% Glycerol and 0.05% BSA
Concentration	Batch dependent
Storage instruction	For continuous use, store undiluted antibody at 2-8°C for up to a week. For long-term storage, aliquot and store at -20°C. Storage in frost free freezers is not recommended. Avoid repeated freeze/thaw cycles. Suggest spin the vial prior to opening. The antibody solution should be gently mixed before use.
Note	For laboratory research only, not for drug, diagnostic or other use.

Bioinformation

Gene Symbol	BCKDK
Gene Full Name	branched chain ketoacid dehydrogenase kinase
Background	The branched-chain alpha-ketoacid dehydrogenase complex (BCKD) is an important regulator of the valine, leucine, and isoleucine catabolic pathways. The protein encoded by this gene is found in the mitochondrion, where it phosphorylates and inactivates BCKD. Several transcript variants encoding different isoforms have been found for this gene. [provided by RefSeq, Dec 2012]
Function	Catalyzes the phosphorylation and inactivation of the branched-chain alpha-ketoacid dehydrogenase complex, the key regulatory enzyme of the valine, leucine and isoleucine catabolic pathways. Key enzyme that regulate the activity state of the BCKD complex. [UniProt]
Calculated Mw	46 kDa
PTM	Autophosphorylated. [UniProt]
Cellular Localization	Mitochondrion matrix. Mitochondrion. [UniProt]

Images



HeLa

ARG43072 anti-BCKDK antibody WB image

Western blot: HeLa cell lysate stained with ARG43072 anti-BCKDK antibody at 1:1000 dilution.