

ARG43031 anti-EML4 antibody

Package: 100 µl
Store at: -20°C

Summary

Product Description	Rabbit Polyclonal antibody recognizes EML4
Tested Reactivity	Hu, Ms, Rat
Tested Application	ICC/IF, IHC-P, WB
Host	Rabbit
Clonality	Polyclonal
Isotype	IgG
Target Name	EML4
Species	Human
Immunogen	Recombinant fusion protein corresponding to aa. 360-560 of Human EML4 (NP_061936.2).
Conjugation	Un-conjugated
Alternate Names	ELP120; ROPP120; C2orf2; Echinoderm microtubule-associated protein-like 4; EMAP-4; Ropp 120; EMAPL4; Restrictedly overexpressed proliferation-associated protein

Application Instructions

Application table	Application	Dilution
	ICC/IF	1:50 - 1:200
	IHC-P	1:50 - 1:200
	WB	1:500 - 1:2000
Application Note	* The dilutions indicate recommended starting dilutions and the optimal dilutions or concentrations should be determined by the scientist.	
Positive Control	HepG2	

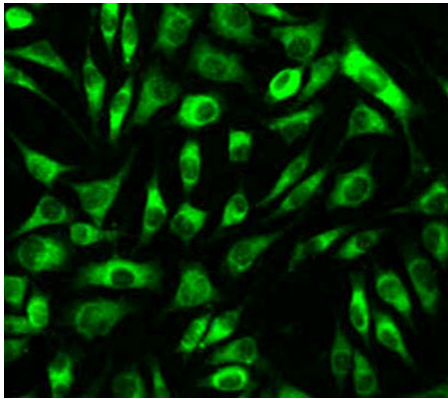
Properties

Form	Liquid
Purification	Affinity purified.
Buffer	PBS (pH 7.3), 0.02% Sodium azide and 50% Glycerol.
Preservative	0.02% Sodium azide
Stabilizer	50% Glycerol
Storage instruction	For continuous use, store undiluted antibody at 2-8°C for up to a week. For long-term storage, aliquot and store at -20°C. Storage in frost free freezers is not recommended. Avoid repeated freeze/thaw cycles. Suggest spin the vial prior to opening. The antibody solution should be gently mixed before use.
Note	For laboratory research only, not for drug, diagnostic or other use.

Bioinformation

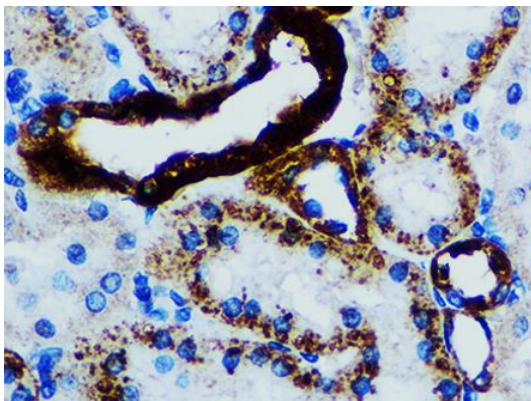
Gene Symbol	EML4
Gene Full Name	echinoderm microtubule associated protein like 4
Background	This gene is a member of the echinoderm microtubule associated protein-like family. The encoded WD-repeat protein may be involved in microtubule formation. Abnormal fusion of parts of this gene with portions of the anaplastic lymphoma receptor tyrosine kinase gene, which generates EML4-ALK fusion transcripts, is one of the primary mutations associated with non-small cell lung cancer. Alternative splicing of this gene results in two transcript variants. [provided by RefSeq, Jan 2015]
Function	May modify the assembly dynamics of microtubules, such that microtubules are slightly longer, but more dynamic. [UniProt]
Calculated Mw	109 kDa
Cellular Localization	Cytoplasm, cytoskeleton. [UniProt]

Images



ARG43031 anti-EML4 antibody ICC/IF image

Immunofluorescence: L929 cells stained with ARG43031 anti-EML4 antibody at 1:100 dilution.



ARG43031 anti-EML4 antibody IHC-P image

Immunohistochemistry: Paraffin-embedded Rat kidney tissue stained with ARG43031 anti-EML4 antibody at 1:100 dilution.

ARG43031 anti-EML4 antibody WB image

Western blot: 25 µg of HepG2 cell lysate stained with ARG43031 anti-EML4 antibody at 1:1000 dilution.

