

## ARG43028 anti-KIF5B / Kinesin Heavy Chain antibody

Package: 100 µl  
Store at: -20°C

### Summary

Product Description	Rabbit Polyclonal antibody recognizes KIF5B / Kinesin Heavy Chain
Tested Reactivity	Hu, Ms, Rat
Tested Application	ICC/IF, IHC-P, WB
Host	Rabbit
Clonality	Polyclonal
Isotype	IgG
Target Name	KIF5B / Kinesin Heavy Chain
Species	Human
Immunogen	Recombinant fusion protein corresponding to aa. 650-770 of Human KIF5B / Kinesin Heavy Chain (NP_004512.1).
Conjugation	Un-conjugated
Alternate Names	HEL-S-61; Kinesin-1 heavy chain; Conventional kinesin heavy chain; KINH; KNS1; Ubiquitous kinesin heavy chain; UKHC; KNS

### Application Instructions

Application table	Application	Dilution
	ICC/IF	1:50 - 1:200
	IHC-P	1:50 - 1:200
	WB	1:500 - 1:2000
Application Note	* The dilutions indicate recommended starting dilutions and the optimal dilutions or concentrations should be determined by the scientist.	
Positive Control	HeLa	

### Properties

Form	Liquid
Purification	Affinity purified.
Buffer	PBS (pH 7.3), 0.02% Sodium azide and 50% Glycerol.
Preservative	0.02% Sodium azide
Stabilizer	50% Glycerol
Storage instruction	For continuous use, store undiluted antibody at 2-8°C for up to a week. For long-term storage, aliquot and store at -20°C. Storage in frost free freezers is not recommended. Avoid repeated freeze/thaw cycles. Suggest spin the vial prior to opening. The antibody solution should be gently mixed before use.

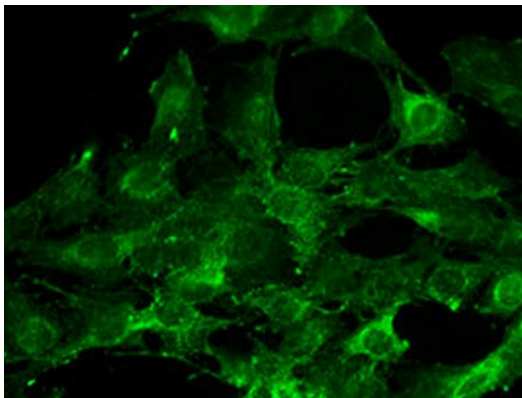
Note For laboratory research only, not for drug, diagnostic or other use.

## Bioinformation

---

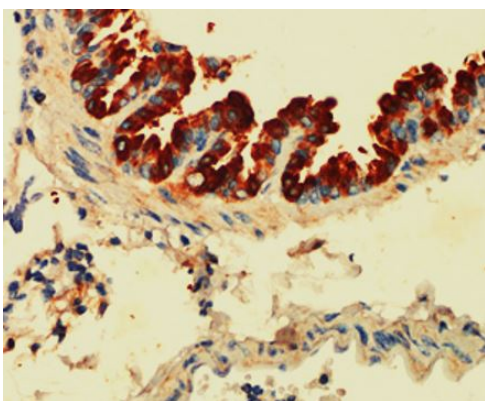
Gene Symbol	KIF5B
Gene Full Name	kinesin family member 5B
Function	Microtubule-dependent motor required for normal distribution of mitochondria and lysosomes. Can induce formation of neurite-like membrane protrusions in non-neuronal cells in a ZFYVE27-dependent manner (By similarity). Regulates centrosome and nuclear positioning during mitotic entry. During the G2 phase of the cell cycle in a BICD2-dependent manner, antagonizes dynein function and drives the separation of nuclei and centrosomes (PubMed:20386726). Required for anterograde axonal transportation of MAPK8IP3/JIP3 which is essential for MAPK8IP3/JIP3 function in axon elongation (By similarity). [UniProt]
Calculated Mw	110 kDa
Cellular Localization	Cytoplasm, cytoskeleton. Note=Uniformly distributed between soma and neurites in hippocampal neurons. [UniProt]

## Images



ARG43028 anti-KIF5B / Kinesin Heavy Chain antibody ICC/IF image

Immunofluorescence: C6 cells stained with ARG43028 anti-KIF5B / Kinesin Heavy Chain antibody at 1:100 dilution.



ARG43028 anti-KIF5B / Kinesin Heavy Chain antibody IHC-P image

Immunohistochemistry: Paraffin-embedded Mouse lung tissue stained with ARG43028 anti-KIF5B / Kinesin Heavy Chain antibody at 1:200 dilution.

ARG43028 anti-KIF5B / Kinesin Heavy Chain antibody WB image

Western blot: 25 µg of HeLa cell lysate stained with ARG43028 anti-KIF5B / Kinesin Heavy Chain antibody at 1:1000 dilution.

