

## ARG42998 anti-MAS1L antibody

Package: 100 µl  
Store at: -20°C

### Summary

Product Description	Rabbit Polyclonal antibody recognizes MAS1L
Tested Reactivity	Hu
Tested Application	FACS, IP, WB
Host	Rabbit
Clonality	Polyclonal
Isotype	IgG
Target Name	MAS1L
Species	Human
Immunogen	Synthetic peptide of Human MAS1L.
Conjugation	Un-conjugated
Alternate Names	MAS-L; Mas-related G-protein coupled receptor MRG; dJ994E9.2; MRG; MAS-R; MAS1-like

### Application Instructions

Application table	Application	Dilution
	FACS	1:20
	IP	1:20 - 1:100
	WB	1:2000 - 1:10000
Application Note	* The dilutions indicate recommended starting dilutions and the optimal dilutions or concentrations should be determined by the scientist.	
Positive Control	K562	
Observed Size	~ 43 kDa	

### Properties

Form	Liquid
Purification	Affinity purified.
Buffer	50 mM Tris-Glycine (pH 7.4), 150 mM NaCl, 0.01% Sodium azide, 40% Glycerol and 0.05% BSA.
Preservative	0.01% Sodium azide
Stabilizer	40% Glycerol and 0.05% BSA
Concentration	Batch dependent
Storage instruction	For continuous use, store undiluted antibody at 2-8°C for up to a week. For long-term storage, aliquot and store at -20°C. Storage in frost free freezers is not recommended. Avoid repeated freeze/thaw cycles. Suggest spin the vial prior to opening. The antibody solution should be gently mixed before use.

Note

For laboratory research only, not for drug, diagnostic or other use.

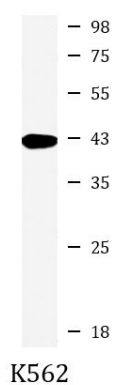
### Bioinformation

---

Gene Symbol	MAS1L
Gene Full Name	MAS1 proto-oncogene like, G protein-coupled receptor
Calculated Mw	42 kDa
Cellular Localization	Cell membrane; Multi-pass membrane protein. [UniProt]

### Images

---



ARG42998 anti-MAS1L antibody WB image

Western blot: K562 cell lysate stained with ARG42998 anti-MAS1L antibody at 1:1000 dilution.