

ARG42951 anti-SSR3 antibody

Package: 50 µg
Store at: -20°C

Summary

Product Description	Rabbit Polyclonal antibody recognizes SSR3
Tested Reactivity	Hu, Ms, Rat
Tested Application	ICC/IF, IHC-P, WB
Host	Rabbit
Clonality	Polyclonal
Isotype	IgG
Target Name	SSR3
Species	Human
Immunogen	Synthetic peptide corresponding to aa. 8-23 of Human SSR3. (KQQSEEDLLLQDFSRN)
Conjugation	Un-conjugated
Alternate Names	TRAPG; Translocon-associated protein subunit gamma; Signal sequence receptor subunit gamma; TRAP-gamma; SSR-gamma

Application Instructions

Application table	Application	Dilution
	ICC/IF	1:200 - 1:1000
	IHC-P	1:200 - 1:1000
	WB	1:500 - 1:2000
Application Note	IHC-P: Antigen Retrieval: Heat mediation was performed in Citrate buffer (pH 6.0) for 20 min. * The dilutions indicate recommended starting dilutions and the optimal dilutions or concentrations should be determined by the scientist.	
Observed Size	~ 21 kDa	

Properties

Form	Liquid
Purification	Affinity purification with immunogen.
Buffer	0.2% Na ₂ HPO ₄ , 0.9% NaCl, 0.05% Thimerosal, 0.05% Sodium azide and 5% BSA.
Preservative	0.05% Thimerosal and 0.05% Sodium azide
Stabilizer	5% BSA
Concentration	0.5 mg/ml
Storage instruction	For continuous use, store undiluted antibody at 2-8°C for up to a week. For long-term storage, aliquot and store at -20°C or below. Storage in frost free freezers is not recommended. Avoid repeated freeze/thaw cycles. Suggest spin the vial prior to opening. The antibody solution should be gently mixed

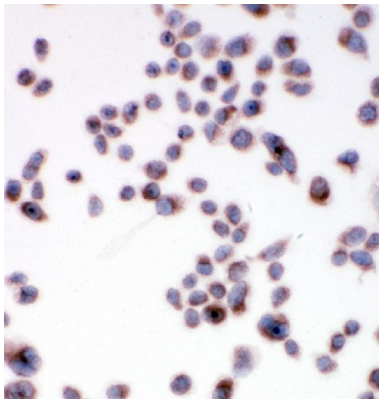
before use.

Note For laboratory research only, not for drug, diagnostic or other use.

Bioinformation

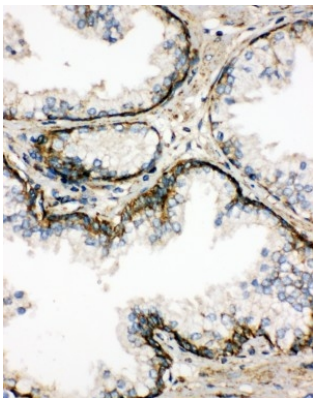
Gene Symbol	SSR3
Gene Full Name	signal sequence receptor, gamma (translocon-associated protein gamma)
Background	The signal sequence receptor (SSR) is a glycosylated endoplasmic reticulum (ER) membrane receptor associated with protein translocation across the ER membrane. The SSR is comprised of four membrane proteins/subunits: alpha, beta, gamma, and delta. The first two are glycosylated subunits and the latter two are non-glycosylated subunits. This gene encodes the gamma subunit, which is predicted to span the membrane four times. [provided by RefSeq, Aug 2010]
Function	TRAP proteins are part of a complex whose function is to bind calcium to the ER membrane and thereby regulate the retention of ER resident proteins. [UniProt]
Calculated Mw	21 kDa
Cellular Localization	Endoplasmic reticulum membrane; Multi-pass membrane protein. [UniProt]

Images



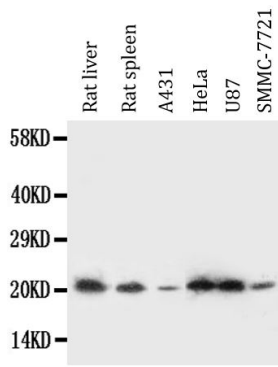
ARG42951 anti-SSR3 antibody ICC image

Immunocytochemistry: HeLa cells were blocked with 10% goat serum and then stained with ARG42951 anti-SSR3 antibody at 1 µg/ml dilution, overnight at 4°C.



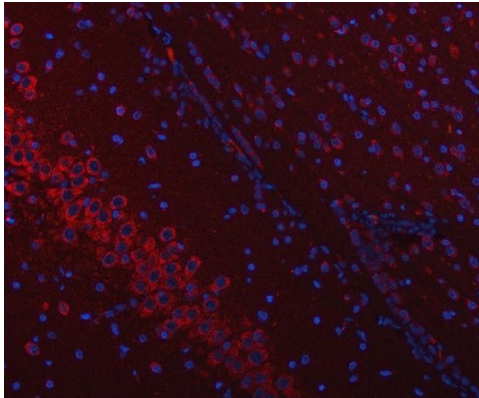
ARG42951 anti-SSR3 antibody IHC-P image

Immunohistochemistry: Paraffin-embedded Human prostatic cancer tissue stained with ARG42951 anti-SSR3 antibody.



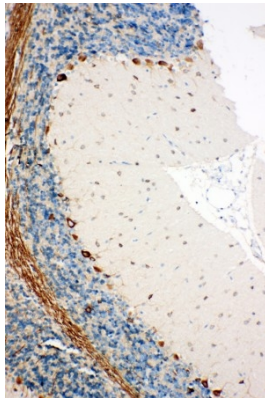
ARG42951 anti-SSR3 antibody WB image

Western blot: 50 µg of Rat liver, 50 µg of Rat spleen, 40 µg of A431, 40 µg of HeLa, 40 µg of U87 and 40 µg of SMMC-7721 whole cell lysates stained with ARG42951 anti-SSR3 antibody at 0.5 µg/ml dilution.



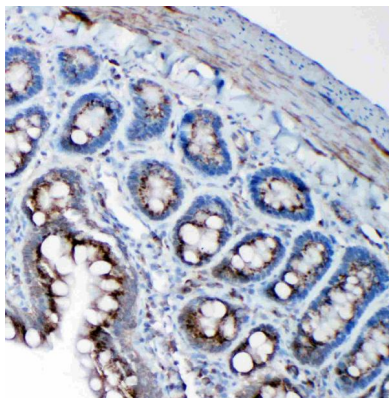
ARG42951 anti-SSR3 antibody IHC-P image

Immunohistochemistry: Mouse brain tissue stained with ARG42951 anti-SSR3 antibody at 2 µg/mL dilution.



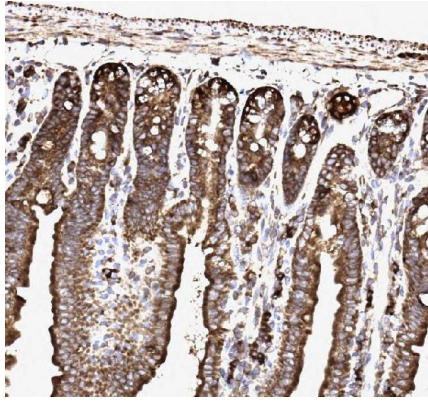
ARG42951 anti-SSR3 antibody IHC-P image

Immunohistochemistry: Paraffin-embedded Rat brain tissue stained with ARG42951 anti-SSR3 antibody.



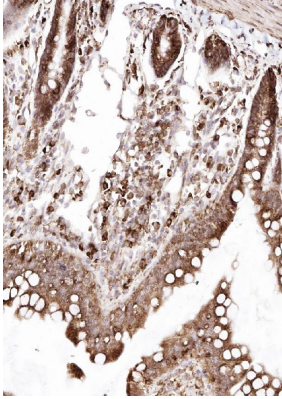
ARG42951 anti-SSR3 antibody IHC-P image

Immunohistochemistry: Paraffin-embedded Rat intestine tissue stained with ARG42951 anti-SSR3 antibody.



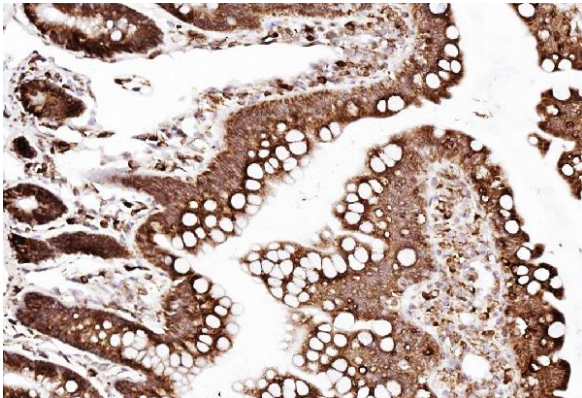
ARG42951 anti-SSR3 antibody IHC-P image

Immunohistochemistry: Paraffin-embedded Mouse intestine tissue. Antigen Retrieval: Heat mediation was performed in Citrate buffer (pH 6.0) for 20 min. The tissue section was blocked with 10% goat serum. The tissue section was then stained with ARG42951 anti-SSR3 antibody at 1 µg/ml dilution, overnight at 4°C.



ARG42951 anti-SSR3 antibody IHC-P image

Immunohistochemistry: Paraffin-embedded Rat intestine tissue. Antigen Retrieval: Heat mediation was performed in Citrate buffer (pH 6.0) for 20 min. The tissue section was blocked with 10% goat serum. The tissue section was then stained with ARG42951 anti-SSR3 antibody at 1 µg/ml dilution, overnight at 4°C.



ARG42951 anti-SSR3 antibody IHC-P image

Immunohistochemistry: Paraffin-embedded Rat intestine tissue. Antigen Retrieval: Heat mediation was performed in Citrate buffer (pH 6.0) for 20 min. The tissue section was blocked with 10% goat serum. The tissue section was then stained with ARG42951 anti-SSR3 antibody at 1 µg/ml dilution, overnight at 4°C.
