

ARG42935
anti-TIMP2 antibodyPackage: 100 µl
Store at: -20°C

Summary

Product Description	Rabbit Polyclonal antibody recognizes TIMP2
Tested Reactivity	Hu, Ms, Rat
Tested Application	ICC/IF, IHC-P, WB
Host	Rabbit
Clonality	Polyclonal
Isotype	IgG
Target Name	TIMP2
Species	Human
Immunogen	Synthetic peptide within aa. 100-200 of Human TIMP2 (NP_003246.1).
Conjugation	Un-conjugated
Alternate Names	TIMP-2; Tissue inhibitor of metalloproteinases 2; CSC-21K; DDC8; Metalloproteinase inhibitor 2

Application Instructions

Application table	Application	Dilution
	ICC/IF	1:50 - 1:200
	IHC-P	1:50 - 1:200
	WB	1:500 - 1:2000
Application Note	* The dilutions indicate recommended starting dilutions and the optimal dilutions or concentrations should be determined by the scientist.	
Positive Control	A549	
Observed Size	~ 26 kDa	

Properties

Form	Liquid
Purification	Affinity purified.
Buffer	PBS (pH 7.3), 0.02% Sodium azide and 50% Glycerol.
Preservative	0.02% Sodium azide
Stabilizer	50% Glycerol
Storage instruction	For continuous use, store undiluted antibody at 2-8°C for up to a week. For long-term storage, aliquot and store at -20°C. Storage in frost free freezers is not recommended. Avoid repeated freeze/thaw cycles. Suggest spin the vial prior to opening. The antibody solution should be gently mixed before use.

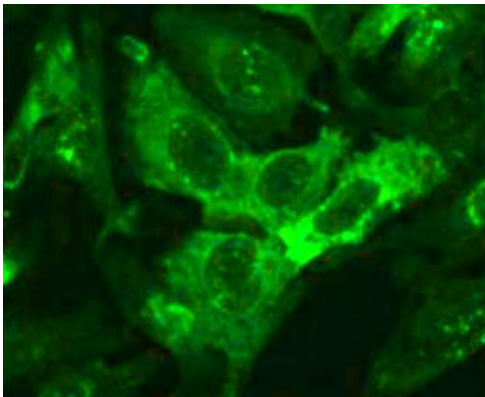
Note

For laboratory research only, not for drug, diagnostic or other use.

Bioinformation

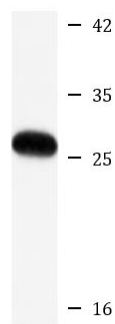
Gene Symbol	TIMP2
Gene Full Name	TIMP metalloproteinase inhibitor 2
Background	This gene is a member of the TIMP gene family. The proteins encoded by this gene family are natural inhibitors of the matrix metalloproteinases, a group of peptidases involved in degradation of the extracellular matrix. In addition to an inhibitory role against metalloproteinases, the encoded protein has a unique role among TIMP family members in its ability to directly suppress the proliferation of endothelial cells. As a result, the encoded protein may be critical to the maintenance of tissue homeostasis by suppressing the proliferation of quiescent tissues in response to angiogenic factors, and by inhibiting protease activity in tissues undergoing remodelling of the extracellular matrix. [provided by RefSeq, Jul 2008]
Function	Complexes with metalloproteinases (such as collagenases) and irreversibly inactivates them by binding to their catalytic zinc cofactor. Known to act on MMP-1, MMP-2, MMP-3, MMP-7, MMP-8, MMP-9, MMP-10, MMP-13, MMP-14, MMP-15, MMP-16 and MMP-19. [UniProt]
Calculated Mw	24 kDa
PTM	The activity of TIMP2 is dependent on the presence of disulfide bonds. [UniProt]
Cellular Localization	Secreted. [UniProt]

Images



ARG42935 anti-TIMP2 antibody ICC/IF image

Immunofluorescence: U2OS cells stained with ARG42935 anti-TIMP2 antibody at 1:100 dilution.



A549

ARG42935 anti-TIMP2 antibody WB image

Western blot: A549 cell lysate stained with ARG42935 anti-TIMP2 antibody at 1:1000 dilution.