

## ARG42910 anti-Syndecan 3 antibody

Package: 50 µg  
Store at: -20°C

### Summary

Product Description	Rabbit Polyclonal antibody recognizes Syndecan 3
Tested Reactivity	Hu, Rat
Predict Reactivity	Ms, Hm
Tested Application	IHC-P, WB
Host	Rabbit
Clonality	Polyclonal
Isotype	IgG
Target Name	Syndecan 3
Species	Mouse
Immunogen	Synthetic peptide corresponding to aa. 45-60 of Mouse Syndecan 3. (AQRWRNENFERPVDLE)
Conjugation	Un-conjugated
Alternate Names	Syndecan-3; SYND3; SDCN

### Application Instructions

Application table	Application	Dilution
	IHC-P	1:200 - 1:1000
	WB	1:500 - 1:2000
Application Note	* The dilutions indicate recommended starting dilutions and the optimal dilutions or concentrations should be determined by the scientist.	
Observed Size	~ 55 kDa	

### Properties

Form	Liquid
Purification	Affinity purification with immunogen.
Buffer	0.2% Na <sub>2</sub> HPO <sub>4</sub> , 0.9% NaCl, 0.05% Thimerosal, 0.05% Sodium azide and 5% BSA.
Preservative	0.05% Thimerosal and 0.05% Sodium azide
Stabilizer	5% BSA
Concentration	0.5 mg/ml
Storage instruction	For continuous use, store undiluted antibody at 2-8°C for up to a week. For long-term storage, aliquot and store at -20°C or below. Storage in frost free freezers is not recommended. Avoid repeated freeze/thaw cycles. Suggest spin the vial prior to opening. The antibody solution should be gently mixed before use.

Note

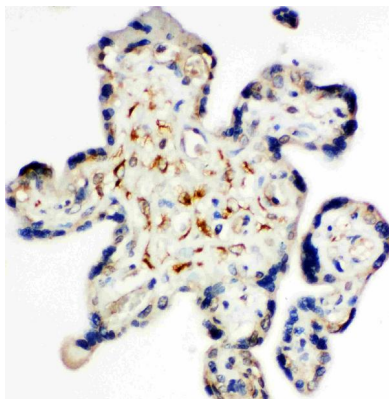
For laboratory research only, not for drug, diagnostic or other use.

## Bioinformation

---

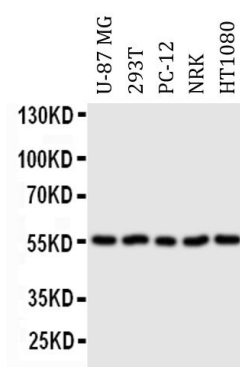
Gene Symbol	SDC3
Gene Full Name	syndecan 3
Background	The protein encoded by this gene belongs to the syndecan proteoglycan family. It may play a role in the organization of cell shape by affecting the actin cytoskeleton, possibly by transferring signals from the cell surface in a sugar-dependent mechanism. Allelic variants of this gene have been associated with obesity. [provided by RefSeq, Oct 2009]
Function	Cell surface proteoglycan that may bear heparan sulfate (By similarity). May have a role in the organization of cell shape by affecting the actin cytoskeleton, possibly by transferring signals from the cell surface in a sugar-dependent mechanism. [UniProt]
Calculated Mw	46 kDa
PTM	O-glycosylated within the Thr/Ser-rich region which could interact with lectin domains on other molecules. [UniProt]
Cellular Localization	Membrane; Single-pass type I membrane protein. [UniProt]

## Images



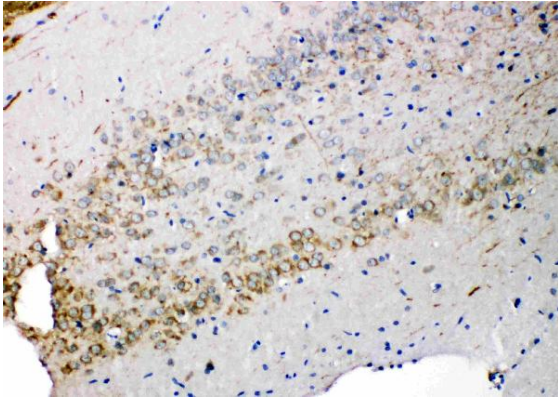
ARG42910 anti-Syndecan 3 antibody IHC-P image

Immunohistochemistry: Paraffin-embedded Human placenta tissue stained with ARG42910 anti-Syndecan 3 antibody.



ARG42910 anti-Syndecan 3 antibody WB image

Western blot: U-87 MG, 293T, PC-12, NRK and HT1080 cell lysates stained with ARG42910 anti-Syndecan 3 antibody.



ARG42910 anti-Syndecan 3 antibody IHC-P image

Immunohistochemistry: Paraffin-embedded Rat brain tissue stained with ARG42910 anti-Syndecan 3 antibody.