

ARG42901 anti-UCHL5 / UCH37 antibody

Package: 100 µl
Store at: -20°C

Summary

| | |
|---------------------|--|
| Product Description | Rabbit Polyclonal antibody recognizes UCHL5 / UCH37 |
| Tested Reactivity | Hu, Ms, Rat |
| Tested Application | ICC/IF, IHC-P, WB |
| Host | Rabbit |
| Clonality | Polyclonal |
| Isotype | IgG |
| Target Name | UCHL5 / UCH37 |
| Species | Human |
| Immunogen | Recombinant fusion protein corresponding to aa. 1-328 of Human UCHL5 / UCH37 (NP_001186190.1). |
| Conjugation | Un-conjugated |
| Alternate Names | UCH-L5; CGI-70; UCH37; INO80R; Ubiquitin thioesterase L5; Ubiquitin C-terminal hydrolase UCH37; Ubiquitin carboxyl-terminal hydrolase isozyme L5; EC 3.4.19.12 |

Application Instructions

| Application table | Application | Dilution |
|-------------------|--|----------------|
| | ICC/IF | 1:50 - 1:200 |
| | IHC-P | 1:50 - 1:200 |
| | WB | 1:500 - 1:2000 |
| Application Note | * The dilutions indicate recommended starting dilutions and the optimal dilutions or concentrations should be determined by the scientist. | |
| Positive Control | Rat brain | |
| Observed Size | ~ 35 kDa | |

Properties

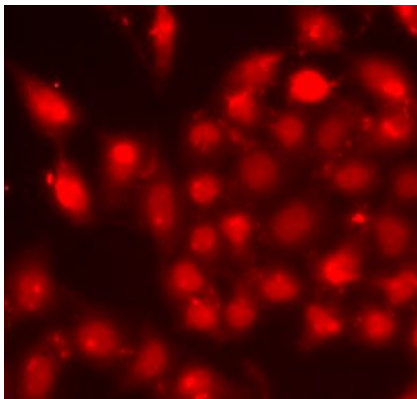
| | |
|---------------------|---|
| Form | Liquid |
| Purification | Affinity purified. |
| Buffer | PBS (pH 7.3), 0.02% Sodium azide and 50% Glycerol. |
| Preservative | 0.02% Sodium azide |
| Stabilizer | 50% Glycerol |
| Storage instruction | For continuous use, store undiluted antibody at 2-8°C for up to a week. For long-term storage, aliquot and store at -20°C. Storage in frost free freezers is not recommended. Avoid repeated freeze/thaw cycles. Suggest spin the vial prior to opening. The antibody solution should be gently mixed before use. |

Note

For laboratory research only, not for drug, diagnostic or other use.

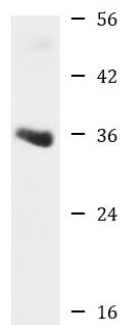
Bioinformation

| | |
|-----------------------|---|
| Gene Symbol | UCHL5 |
| Gene Full Name | ubiquitin carboxyl-terminal hydrolase L5 |
| Function | Protease that specifically cleaves 'Lys-48'-linked polyubiquitin chains. Deubiquitinating enzyme associated with the 19S regulatory subunit of the 26S proteasome. Putative regulatory component of the INO80 complex; however is inactive in the INO80 complex and is activated by a transient interaction of the INO80 complex with the proteasome via ADRM1. [UniProt] |
| Calculated Mw | 38 kDa |
| Cellular Localization | Cytoplasm. Nucleus. Note=Associates with the proteasome 19S subunit in the cytoplasm. Associates with the INO80 complex in the nucleus. [UniProt] |

Images

ARG42901 anti-UCHL5 / UCH37 antibody ICC/IF image

Immunofluorescence: A549 cells stained with ARG42901 anti-UCHL5 / UCH37 antibody.



Rat brain

ARG42901 anti-UCHL5 / UCH37 antibody WB image

Western blot: 25 µg of Rat brain lysate stained with ARG42901 anti-UCHL5 / UCH37 antibody at 1:1000 dilution.