

ARG42892 anti-HAUS7 / UCHL5IP antibody

Package: 100 µl
Store at: -20°C

Summary

Product Description	Rabbit Polyclonal antibody recognizes HAUS7 / UCHL5IP
Tested Reactivity	Hu
Tested Application	WB
Host	Rabbit
Clonality	Polyclonal
Isotype	IgG
Target Name	HAUS7 / UCHL5IP
Species	Human
Immunogen	Recombinant protein of Human HAUS7 / UCHL5IP.
Conjugation	Un-conjugated
Alternate Names	UIP1; UCHL5-interacting protein; 26S proteasome-associated UCH37-interacting protein 1; UCHL5IP; X-linked protein STS1769; HAUS augmin-like complex subunit 7

Application Instructions

Application table	Application	Dilution
	WB	1:2000 - 1:10000
Application Note	* The dilutions indicate recommended starting dilutions and the optimal dilutions or concentrations should be determined by the scientist.	
Positive Control	K562	
Observed Size	~ 42 kDa	

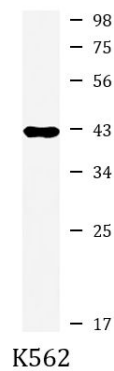
Properties

Form	Liquid
Purification	Affinity purified.
Buffer	50 mM Tris-Glycine (pH 7.4), 150 mM NaCl, 0.01% Sodium azide, 40% Glycerol and 0.05% BSA.
Preservative	0.01% Sodium azide
Stabilizer	40% Glycerol and 0.05% BSA
Concentration	Batch dependent
Storage instruction	For continuous use, store undiluted antibody at 2-8°C for up to a week. For long-term storage, aliquot and store at -20°C. Storage in frost free freezers is not recommended. Avoid repeated freeze/thaw cycles. Suggest spin the vial prior to opening. The antibody solution should be gently mixed before use.
Note	For laboratory research only, not for drug, diagnostic or other use.

Bioinformation

Gene Symbol	HAUS7
Gene Full Name	HAUS augmin-like complex, subunit 7
Background	This gene encodes a subunit of the augmin complex, which regulates centrosome and mitotic spindle integrity, and is necessary for the completion of cytokinesis. The encoded protein was identified by interaction with ubiquitin C-terminal hydrolase 37. Alternative splicing results in multiple transcript variants. [provided by RefSeq, Sep 2012]
Function	Contributes to mitotic spindle assembly, maintenance of centrosome integrity and completion of cytokinesis as part of the HAUS augmin-like complex. [UniProt]
Calculated Mw	41 kDa
Cellular Localization	Cytoplasm, cytoskeleton, microtubule organizing center, centrosome. Cytoplasm, cytoskeleton, spindle. Note=Localizes to interphase centrosomes and to mitotic spindle microtubules. [UniProt]

Images



ARG42892 anti-HAUS7 / UCHL5IP antibody WB image

Western blot: K562 cell lysate stained with ARG42892 anti-HAUS7 / UCHL5IP antibody at 1:1000 dilution.