

**ARG42839**  
anti-Glypican 5 antibodyPackage: 50 µg  
Store at: -20°C

### Summary

Product Description	Rabbit Polyclonal antibody recognizes Glypican 5
Tested Reactivity	Hu
Tested Application	FACS, ICC/IF, WB
Host	Rabbit
Clonality	Polyclonal
Isotype	IgG
Target Name	Glypican 5
Species	Human
Immunogen	Recombinant protein corresponding to Q28-D538 of Human Glypican 5.
Conjugation	Un-conjugated
Alternate Names	Glypican-5

### Application Instructions

Application table	Application	Dilution
	FACS	1:150 - 1:500
	ICC/IF	1:200 - 1:1000
	WB	1:500 - 1:2000
Application Note	* The dilutions indicate recommended starting dilutions and the optimal dilutions or concentrations should be determined by the scientist.	
Observed Size	~ 64 kDa	

### Properties

Form	Liquid
Purification	Affinity purification with immunogen.
Buffer	0.2% Na <sub>2</sub> HPO <sub>4</sub> , 0.9% NaCl, 0.01% Sodium azide and 4% Trehalose.
Preservative	0.01% Sodium azide
Stabilizer	4% Trehalose
Concentration	0.5 mg/ml
Storage instruction	For continuous use, store undiluted antibody at 2-8°C for up to a week. For long-term storage, aliquot and store at -20°C or below. Storage in frost free freezers is not recommended. Avoid repeated freeze/thaw cycles. Suggest spin the vial prior to opening. The antibody solution should be gently mixed before use.

Note

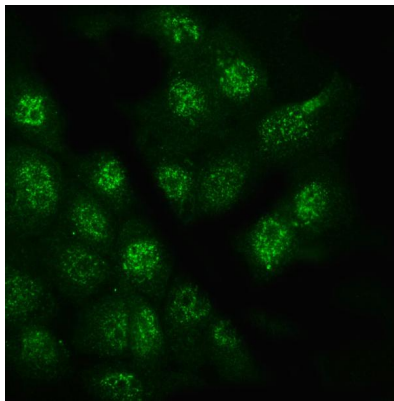
For laboratory research only, not for drug, diagnostic or other use.

## Bioinformation

---

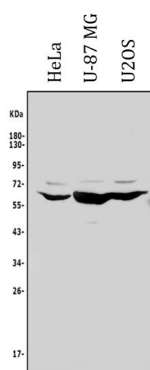
Gene Symbol	GPC5
Gene Full Name	glypican 5
Background	Cell surface heparan sulfate proteoglycans are composed of a membrane-associated protein core substituted with a variable number of heparan sulfate chains. Members of the glypican-related integral membrane proteoglycan family (GRIPS) contain a core protein anchored to the cytoplasmic membrane via a glycosyl phosphatidylinositol linkage. These proteins may play a role in the control of cell division and growth regulation. [provided by RefSeq, Jul 2008]
Function	Cell surface proteoglycan that bears heparan sulfate. [UniProt]
Calculated Mw	64 kDa
Cellular Localization	Cell membrane; Lipid-anchor, GPI-anchor; Extracellular side. Secreted glypican-5: Secreted, extracellular space. [UniProt]

## Images



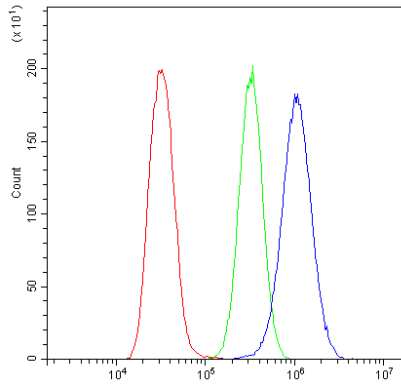
ARG42839 anti-Glypican 5 antibody ICC/IF image

Immunofluorescence: A431 cells were blocked with 10% goat serum and then stained with ARG42839 anti-Glypican 5 antibody (green) at 4 µg/ml dilution, overnight at 4°C.



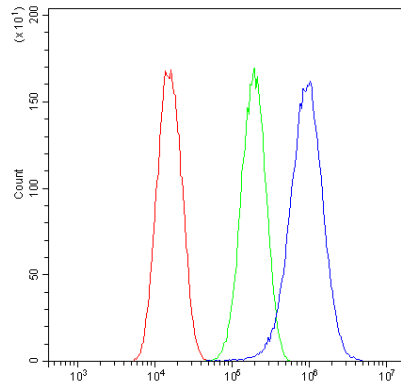
ARG42839 anti-Glypican 5 antibody WB image

Western blot: 50 µg of sample under reducing conditions. HeLa, U-87 MG and U2OS whole cell lysates stained with ARG42839 anti-Glypican 5 antibody at 0.5 µg/ml dilution, overnight at 4°C.



#### ARG42839 anti-Glypican 5 antibody FACS image

Flow Cytometry: U2OS cells were blocked with 10% normal goat serum and then stained with ARG42839 anti-Glypican 5 antibody (blue) at 1  $\mu\text{g}/10^6$  cells for 30 min at 20°C, followed by incubation with DyLight<sup>®</sup>488 labelled secondary antibody. Isotype control antibody (green) was Rabbit IgG (1  $\mu\text{g}/10^6$  cells) used under the same conditions. Unlabelled sample (red) was also used as a control.



#### ARG42839 anti-Glypican 5 antibody FACS image

Flow Cytometry: U-87 MG cells were blocked with 10% normal goat serum and then stained with ARG42839 anti-Glypican 5 antibody (blue) at 1  $\mu\text{g}/10^6$  cells for 30 min at 20°C, followed by incubation with DyLight<sup>®</sup>488 labelled secondary antibody. Isotype control antibody (green) was Rabbit IgG (1  $\mu\text{g}/10^6$  cells) used under the same conditions. Unlabelled sample (red) was also used as a control.