

ARG42829 anti-TCEA1 antibody

Package: 100 µl
Store at: -20°C

Summary

Product Description	Rabbit Polyclonal antibody recognizes TCEA1
Tested Reactivity	Hu, Ms, Rat
Tested Application	ICC/IF, IP, WB
Host	Rabbit
Clonality	Polyclonal
Isotype	IgG
Target Name	TCEA1
Species	Human
Immunogen	Recombinant protein of Human TCEA1.
Conjugation	Un-conjugated
Alternate Names	GTF2S; TFIS; TF2S; TCEA; Transcription elongation factor TFIS.o; Transcription elongation factor S-II protein 1; SII; Transcription elongation factor A protein 1

Application Instructions

Application table	Application	Dilution
	ICC/IF	1:50
	IP	1:20
	WB	1:2000 - 1:10000
Application Note	* The dilutions indicate recommended starting dilutions and the optimal dilutions or concentrations should be determined by the scientist.	
Positive Control	K562	
Observed Size	~ 35 kDa	

Properties

Form	Liquid
Purification	Affinity purified.
Buffer	50 mM Tris-Glycine (pH 7.4), 150 mM NaCl, 0.01% Sodium azide, 40% Glycerol and 0.05% BSA.
Preservative	0.01% Sodium azide
Stabilizer	40% Glycerol and 0.05% BSA
Concentration	Batch dependent
Storage instruction	For continuous use, store undiluted antibody at 2-8°C for up to a week. For long-term storage, aliquot and store at -20°C. Storage in frost free freezers is not recommended. Avoid repeated freeze/thaw

cycles. Suggest spin the vial prior to opening. The antibody solution should be gently mixed before use.

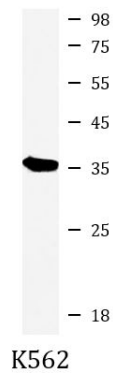
Note

For laboratory research only, not for drug, diagnostic or other use.

Bioinformation

Gene Symbol	TCEA1
Gene Full Name	transcription elongation factor A (SII), 1
Function	Necessary for efficient RNA polymerase II transcription elongation past template-encoded arresting sites. The arresting sites in DNA have the property of trapping a certain fraction of elongating RNA polymerases that pass through, resulting in locked ternary complexes. Cleavage of the nascent transcript by S-II allows the resumption of elongation from the new 3'-terminus. [UniProt]
Calculated Mw	34 kDa
Cellular Localization	Nucleus. [UniProt]

Images



ARG42829 anti-TCEA1 antibody WB image

Western blot: K562 cell lysate stained with ARG42829 anti-TCEA1 antibody at 1:1000 dilution.