

## ARG42822 anti-RBL2 / p130 phospho (Thr986) antibody

Package: 100 µl  
Store at: -20°C

### Summary

Product Description	Rabbit Polyclonal antibody recognizes RBL2 / p130 phospho (Thr986)
Tested Reactivity	Hu, Ms
Tested Application	FACS, IP, WB
Host	Rabbit
Clonality	Polyclonal
Isotype	IgG
Target Name	RBL2 / p130
Species	Human
Immunogen	Phosphospecific peptide around Thr986 of Human RBL2 / p130.
Conjugation	Un-conjugated
Alternate Names	RBR-2; p130; Retinoblastoma-related protein 2; Rb2; P130; Retinoblastoma-like protein 2; 130 kDa retinoblastoma-associated protein; pRb2

### Application Instructions

Application table	Application	Dilution
	FACS	1:50
	IP	1:20
	WB	1:1000
Application Note	* The dilutions indicate recommended starting dilutions and the optimal dilutions or concentrations should be determined by the scientist.	
Positive Control	K562	
Observed Size	~ 130 kDa	

### Properties

Form	Liquid
Purification	Affinity purified.
Buffer	50 mM Tris-Glycine (pH 7.4), 150 mM NaCl, 0.01% Sodium azide, 40% Glycerol and 0.05% BSA.
Preservative	0.01% Sodium azide
Stabilizer	40% Glycerol and 0.05% BSA
Concentration	Batch dependent
Storage instruction	For continuous use, store undiluted antibody at 2-8°C for up to a week. For long-term storage, aliquot and store at -20°C. Storage in frost free freezers is not recommended. Avoid repeated freeze/thaw

cycles. Suggest spin the vial prior to opening. The antibody solution should be gently mixed before use.

Note

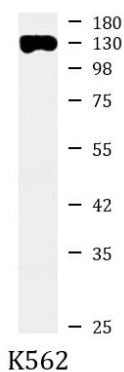
For laboratory research only, not for drug, diagnostic or other use.

## Bioinformation

---

Gene Symbol	RBL2
Gene Full Name	retinoblastoma-like 2
Function	Key regulator of entry into cell division. Directly involved in heterochromatin formation by maintaining overall chromatin structure and, in particular, that of constitutive heterochromatin by stabilizing histone methylation. Recruits and targets histone methyltransferases KMT5B and KMT5C, leading to epigenetic transcriptional repression. Controls histone H4 'Lys-20' trimethylation. Probably acts as a transcription repressor by recruiting chromatin-modifying enzymes to promoters. Potent inhibitor of E2F-mediated trans-activation, associates preferentially with E2F5. Binds to cyclins A and E. Binds to and may be involved in the transforming capacity of the adenovirus E1A protein. May act as a tumor suppressor. [UniProt]
Calculated Mw	128 kDa
PTM	During G0 and early G1 phase of the cell cycle, phosphorylated on Ser-639 and on 5 sites within the domain B. Phosphorylation on Ser-672 in G1 leads to its ubiquitin-dependent proteolysis. [UniProt]
Cellular Localization	Nucleus. [UniProt]

## Images



ARG42822 anti-RBL2 / p130 phospho (Thr986) antibody WB image

Western blot: K562 cell lysate stained with ARG42822 anti-RBL2 / p130 phospho (Thr986) antibody at 1:1000 dilution.