

ARG42790
anti-PLAA / Phospholipase A-2-activating protein antibodyPackage: 100 µl
Store at: -20°C

Summary

Product Description	Rabbit Polyclonal antibody recognizes PLAA / Phospholipase A-2-activating protein
Tested Reactivity	Hu
Tested Application	ICC/IF, IHC-P, WB
Host	Rabbit
Clonality	Polyclonal
Isotype	IgG
Target Name	PLAA / Phospholipase A-2-activating protein
Species	Human
Immunogen	Synthetic peptide derived from Human PLAA / Phospholipase A-2-activating protein.
Conjugation	Un-conjugated
Alternate Names	PLA2P; PLAP; DOA1; Phospholipase A-2-activating protein

Application Instructions

Application table	Application	Dilution
	ICC/IF	1:50 - 1:200
	IHC-P	1:50 - 1:200
	WB	1:500 - 1:2000
Application Note	* The dilutions indicate recommended starting dilutions and the optimal dilutions or concentrations should be determined by the scientist.	
Positive Control	MCF7	
Observed Size	~ 78 kDa	

Properties

Form	Liquid
Purification	Affinity purified.
Buffer	PBS (pH 7.4), 150 mM NaCl, 0.02% Sodium azide and 50% Glycerol.
Preservative	0.02% Sodium azide
Stabilizer	50% Glycerol
Storage instruction	For continuous use, store undiluted antibody at 2-8°C for up to a week. For long-term storage, aliquot and store at -20°C. Storage in frost free freezers is not recommended. Avoid repeated freeze/thaw cycles. Suggest spin the vial prior to opening. The antibody solution should be gently mixed before use.

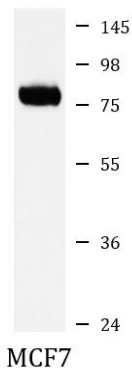
Note

For laboratory research only, not for drug, diagnostic or other use.

Bioinformation

Gene Symbol	PLAA
Gene Full Name	phospholipase A2-activating protein
Function	Plays a role in protein ubiquitination, sorting and degradation through its association with VCP (PubMed:27753622). Involved in ubiquitin-mediated membrane proteins trafficking to late endosomes in an ESCRT-dependent manner, and hence plays a role in synaptic vesicle recycling (By similarity). May play a role in macroautophagy, regulating for instance the clearance of damaged lysosomes (PubMed:27753622). Plays a role in cerebellar Purkinje cell development (By similarity). Positively regulates cytosolic and calcium-independent phospholipase A2 activities in a tumor necrosis factor alpha (TNF-alpha)- or lipopolysaccharide (LPS)-dependent manner, and hence prostaglandin E2 biosynthesis (PubMed:18291623, PubMed:28007986). [UniProt]
Calculated Mw	87 kDa
Cellular Localization	Nucleus. Cytoplasm. Cell junction, synapse. Note=Recruited to damaged lysosomes decorated with K48-linked ubiquitin chains. [UniProt]

Images



ARG42790 anti-PLAA / Phospholipase A-2-activating protein antibody WB image

Western blot: MCF7 cell lysate stained with ARG42790 anti-PLAA / Phospholipase A-2-activating protein antibody.