

ARG42785
anti-Syntaxin 16 antibodyPackage: 100 µl
Store at: -20°C

Summary

Product Description	Rabbit Polyclonal antibody recognizes Syntaxin 16
Tested Reactivity	Hu, Ms, Rat
Tested Application	ICC/IF, IHC-P, WB
Host	Rabbit
Clonality	Polyclonal
Isotype	IgG
Target Name	Syntaxin 16
Species	Human
Immunogen	Synthetic peptide of Human Syntaxin 16.
Conjugation	Un-conjugated
Alternate Names	SYN16; Syn16; Syntaxin-16

Application Instructions

Application table	Application	Dilution
	ICC/IF	1:20
	IHC-P	1:20
	WB	1:1000 - 1:5000
Application Note	* The dilutions indicate recommended starting dilutions and the optimal dilutions or concentrations should be determined by the scientist.	
Positive Control	K562	
Observed Size	~ 37 kDa	

Properties

Form	Liquid
Purification	Affinity purified.
Buffer	50 mM Tris-Glycine (pH 7.4), 150 mM NaCl, 0.01% Sodium azide, 40% Glycerol and 0.05% BSA.
Preservative	0.01% Sodium azide
Stabilizer	40% Glycerol and 0.05% BSA
Concentration	Batch dependent
Storage instruction	For continuous use, store undiluted antibody at 2-8°C for up to a week. For long-term storage, aliquot and store at -20°C. Storage in frost free freezers is not recommended. Avoid repeated freeze/thaw cycles. Suggest spin the vial prior to opening. The antibody solution should be gently mixed before use.

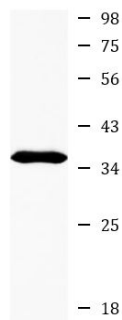
Note

For laboratory research only, not for drug, diagnostic or other use.

Bioinformation

Gene Symbol	STX16
Gene Full Name	syntaxin 16
Background	This gene encodes a protein that is a member of the syntaxin or t-SNARE (target-SNAP receptor) family. These proteins are found on cell membranes and serve as the targets for V-SNARES (vesicle-SNAP receptors) permitting specific synaptic vesicle docking and fusion. A microdeletion in the region of chromosome 20 where this gene is located has been associated with pseudohypoparathyroidism type 1b. Multiple transcript variants have been found for this gene. Read-through transcription also exists between this gene and the neighboring downstream aminopeptidase-like 1 (NPEPL1) gene. [provided by RefSeq, Mar 2011]
Function	SNARE involved in vesicular transport from the late endosomes to the trans-Golgi network. [UniProt]
Calculated Mw	37 kDa
Cellular Localization	Golgi apparatus membrane; Single-pass type IV membrane protein. Isoform C: Cytoplasm. [UniProt]

Images



K562

ARG42785 anti-Syntaxin 16 antibody WB image

Western blot: K562 cell lysate stained with ARG42785 anti-Syntaxin 16 antibody at 1:1000 dilution.