

## ARG42784 anti-SLC25A12 antibody

Package: 100 µl  
Store at: -20°C

### Summary

Product Description	Rabbit Polyclonal antibody recognizes SLC25A12
Tested Reactivity	Hu, Ms, Rat
Tested Application	IP, WB
Host	Rabbit
Clonality	Polyclonal
Isotype	IgG
Target Name	SLC25A12
Species	Human
Immunogen	Synthetic peptide of Human SLC25A12.
Conjugation	Un-conjugated
Alternate Names	AGC1; ARALAR; Mitochondrial aspartate glutamate carrier 1; Calcium-binding mitochondrial carrier protein Aralar1; Solute carrier family 25 member 12

### Application Instructions

Application table	Application	Dilution
	IP	1:20
	WB	1:1000
Application Note	* The dilutions indicate recommended starting dilutions and the optimal dilutions or concentrations should be determined by the scientist.	
Positive Control	NIH/3T3	
Observed Size	~ 75 kDa	

### Properties

Form	Liquid
Purification	Affinity purified.
Buffer	50 mM Tris-Glycine (pH 7.4), 150 mM NaCl, 0.01% Sodium azide, 40% Glycerol and 0.05% BSA.
Preservative	0.01% Sodium azide
Stabilizer	40% Glycerol and 0.05% BSA
Concentration	Batch dependent
Storage instruction	For continuous use, store undiluted antibody at 2-8°C for up to a week. For long-term storage, aliquot and store at -20°C. Storage in frost free freezers is not recommended. Avoid repeated freeze/thaw cycles. Suggest spin the vial prior to opening. The antibody solution should be gently mixed before use.

**Note**

For laboratory research only, not for drug, diagnostic or other use.

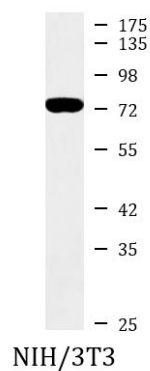
## Bioinformation

---

Gene Symbol	SLC25A12
Gene Full Name	solute carrier family 25 (aspartate/glutamate carrier), member 12
Background	This gene encodes a calcium-binding mitochondrial carrier protein. The encoded protein localizes to the mitochondria and is involved in the exchange of aspartate for glutamate across the inner mitochondrial membrane. Polymorphisms in this gene may be associated with autism, and mutations in this gene may also be a cause of global cerebral hypomyelination. Alternatively spliced transcript variants have been observed for this gene. [provided by RefSeq, Apr 2012]
Function	Mitochondrial and calcium-binding carrier that catalyzes the calcium-dependent exchange of cytoplasmic glutamate with mitochondrial aspartate across the mitochondrial inner membrane (PubMed:11566871, PubMed:25410934). May have a function in the urea cycle (PubMed:11566871). [UniProt]
Calculated Mw	75 kDa
Cellular Localization	Mitochondrion inner membrane; Multi-pass membrane protein. [UniProt]

## Images

---



ARG42784 anti-SLC25A12 antibody WB image

Western blot: NIH/3T3 cell lysate stained with ARG42784 anti-SLC25A12 antibody at 1:1000 dilution.