

ARG42755 anti-Biglycan antibody

Package: 100 µl
Store at: -20°C

Summary

Product Description	Rabbit Polyclonal antibody recognizes Biglycan
Tested Reactivity	Hu
Tested Application	IHC-P, WB
Host	Rabbit
Clonality	Polyclonal
Isotype	IgG
Target Name	Biglycan
Species	Human
Immunogen	Fusion protein of Human Biglycan.
Conjugation	Un-conjugated
Alternate Names	Biglycan; Bone/cartilage proteoglycan I; SLRR1A; PGI; DSPG1; PG-S1

Application Instructions

Application table	Application	Dilution
	IHC-P	1:50 - 1:200
	WB	1:200 - 1:1000
Application Note	* The dilutions indicate recommended starting dilutions and the optimal dilutions or concentrations should be determined by the scientist.	
Positive Control	WB: HeLa IHC-P: Human gastric cancer and human thyroid cancer	
Observed Size	~ 45 kDa	

Properties

Form	Liquid
Purification	Affinity purification with immunogen.
Buffer	PBS (pH 7.4), 0.05% Sodium azide and 40% Glycerol.
Preservative	0.05% Sodium azide
Stabilizer	40% Glycerol
Concentration	0.6 mg/ml
Storage instruction	For continuous use, store undiluted antibody at 2-8°C for up to a week. For long-term storage, aliquot and store at -20°C. Storage in frost free freezers is not recommended. Avoid repeated freeze/thaw cycles. Suggest spin the vial prior to opening. The antibody solution should be gently mixed before use.

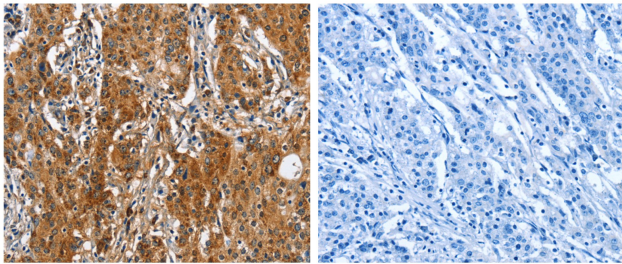
Note

For laboratory research only, not for drug, diagnostic or other use.

Bioinformation

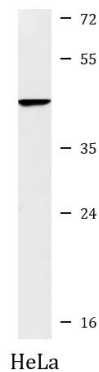
Gene Symbol	BGN
Gene Full Name	biglycan
Background	This gene encodes a member of the small leucine-rich proteoglycan (SLRP) family of proteins. The encoded preproprotein is proteolytically processed to generate the mature protein, which plays a role in bone growth, muscle development and regeneration, and collagen fibril assembly in multiple tissues. This protein may also regulate inflammation and innate immunity. Additionally, the encoded protein may contribute to atherosclerosis and aortic valve stenosis in human patients. This gene and the related gene decorin are thought to be the result of a gene duplication. [provided by RefSeq, Nov 2015]
Function	May be involved in collagen fiber assembly. [UniProt]
Calculated Mw	42 kDa
PTM	The two attached glycosaminoglycan chains can be either chondroitin sulfate or dermatan sulfate. [UniProt]
Cellular Localization	Secreted, extracellular space, extracellular matrix. [UniProt]

Images



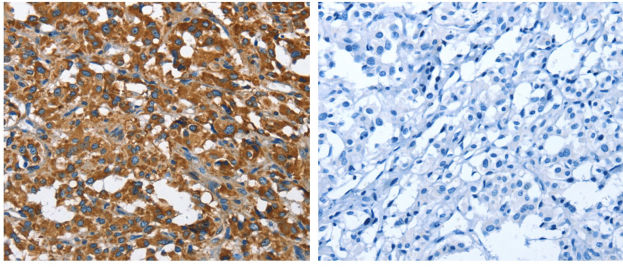
ARG42755 anti-Biglycan antibody IHC-P image

Immunohistochemistry: Paraffin-embedded Human gastric cancer tissue stained with ARG42755 anti-Biglycan antibody (left) at 1:50 dilution, or the same antibody pre-incubated with fusion protein (right). (Original magnification: X200).



ARG42755 anti-Biglycan antibody WB image

Western blot: 40 µg of HeLa cell lysate stained with ARG42755 anti-Biglycan antibody at 1:550 dilution.



ARG42755 anti-Biglycan antibody IHC-P image

Immunohistochemistry: Paraffin-embedded Human thyroid cancer tissue stained with ARG42755 anti-Biglycan antibody (left) at 1:50 dilution, or the same antibody pre-incubated with fusion protein (right). (Original magnification: X200).