

ARG42710
anti-CD48 antibodyPackage: 100 µl
Store at: -20°C

Summary

Product Description	Rabbit Polyclonal antibody recognizes CD48
Tested Reactivity	Hu
Tested Application	ICC/IF, IHC-P, IP, WB
Host	Rabbit
Clonality	Polyclonal
Isotype	IgG
Target Name	CD48
Species	Human
Immunogen	Synthetic peptide derived from Human CD48.
Conjugation	Un-conjugated
Alternate Names	Leukocyte antigen MEM-102; B-lymphocyte activation marker BLAST-1; CD48 antigen; BCM1 surface antigen; CD antigen CD48; TCT.1; BLAST1; BCM1; MEM-102; mCD48; Signaling lymphocytic activation molecule 2; BLAST; hCD48; SLAMF2; SLAM family member 2

Application Instructions

Application table	Application	Dilution
	ICC/IF	1:50 - 1:200
	IHC-P	1:50 - 1:200
	IP	1:50
	WB	1:500 - 1:2000

Application Note * The dilutions indicate recommended starting dilutions and the optimal dilutions or concentrations should be determined by the scientist.

Properties

Form	Liquid
Purification	Affinity purified.
Buffer	PBS (pH 7.4), 150 mM NaCl, 0.02% Sodium azide and 50% Glycerol.
Preservative	0.02% Sodium azide
Stabilizer	50% Glycerol
Storage instruction	For continuous use, store undiluted antibody at 2-8°C for up to a week. For long-term storage, aliquot and store at -20°C. Storage in frost free freezers is not recommended. Avoid repeated freeze/thaw cycles. Suggest spin the vial prior to opening. The antibody solution should be gently mixed before use.

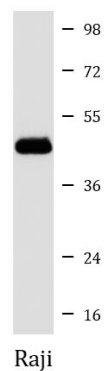
Note

For laboratory research only, not for drug, diagnostic or other use.

Bioinformation

Gene Symbol	CD48
Gene Full Name	CD48 molecule
Background	This gene encodes a member of the CD2 subfamily of immunoglobulin-like receptors which includes SLAM (signaling lymphocyte activation molecules) proteins. The encoded protein is found on the surface of lymphocytes and other immune cells, dendritic cells and endothelial cells, and participates in activation and differentiation pathways in these cells. The encoded protein does not have a transmembrane domain, however, but is held at the cell surface by a GPI anchor via a C-terminal domain which maybe cleaved to yield a soluble form of the receptor. Multiple transcript variants encoding different isoforms have been found for this gene. [provided by RefSeq, Dec 2011]
Function	Ligand for CD2. Might facilitate interaction between activated lymphocytes. Probably involved in regulating T-cell activation. [UniProt]
Calculated Mw	28 kDa
Cellular Localization	Cell membrane; Lipid-anchor, GPI-anchor. [UniProt]

Images



ARG42710 anti-CD48 antibody WB image

Western blot: Raji cell lysate stained with ARG42710 anti-CD48 antibody.