

## ARG42702 anti-EDNRA / Endothelin A receptor antibody

Package: 50 µg  
Store at: -20°C

### Summary

Product Description	Rabbit Polyclonal antibody recognizes EDNRA / Endothelin A receptor
Tested Reactivity	Hu
Tested Application	FACS, IHC-P, WB
Host	Rabbit
Clonality	Polyclonal
Isotype	IgG
Target Name	EDNRA / Endothelin A receptor
Species	Human
Immunogen	Recombinant protein corresponding to N32-Q381 of Human EDNRA / Endothelin A receptor.
Conjugation	Un-conjugated
Alternate Names	ETA-R; ETAR; Endothelin-1 receptor; ETRA; Endothelin A receptor; MFDA; ET-A; ETA; hET-AR

### Application Instructions

Application table	Application	Dilution
	FACS	1:150 - 1:500
	IHC-P	1:200 - 1:1000
	WB	1:500 - 1:2000
Application Note	* The dilutions indicate recommended starting dilutions and the optimal dilutions or concentrations should be determined by the scientist.	
Positive Control	HEK293	
Observed Size	~ 50 kDa	

### Properties

Form	Liquid
Purification	Affinity purification with immunogen.
Buffer	0.2% Na <sub>2</sub> HPO <sub>4</sub> , 0.9% NaCl, 0.01% Sodium azide and 4% Trehalose.
Preservative	0.01% Sodium azide
Stabilizer	4% Trehalose
Concentration	0.5 mg/ml
Storage instruction	For continuous use, store undiluted antibody at 2-8°C for up to a week. For long-term storage, aliquot and store at -20°C or below. Storage in frost free freezers is not recommended. Avoid repeated freeze/thaw cycles. Suggest spin the vial prior to opening. The antibody solution should be gently mixed

before use.

Note

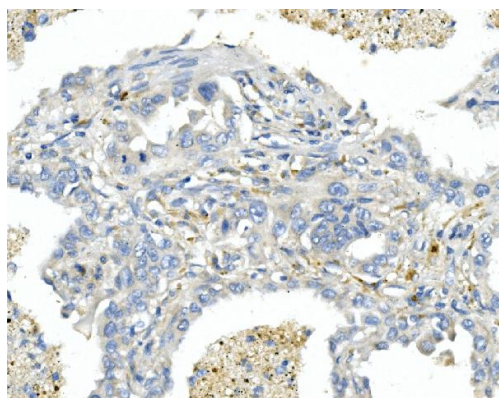
For laboratory research only, not for drug, diagnostic or other use.

## Bioinformation

---

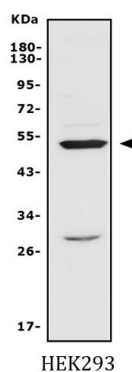
Gene Symbol	EDNRA
Gene Full Name	endothelin receptor type A
Background	This gene encodes the receptor for endothelin-1, a peptide that plays a role in potent and long-lasting vasoconstriction. This receptor associates with guanine-nucleotide-binding (G) proteins, and this coupling activates a phosphatidylinositol-calcium second messenger system. Polymorphisms in this gene have been linked to migraine headache resistance. Alternative splicing results in multiple transcript variants. [provided by RefSeq, Oct 2009]
Function	Receptor for endothelin-1. Mediates its action by association with G proteins that activate a phosphatidylinositol-calcium second messenger system. The rank order of binding affinities for ET-A is: ET1 > ET2 >> ET3. [UniProt]
Calculated Mw	49 kDa
Cellular Localization	Cell membrane; Multi-pass membrane protein. [UniProt]

## Images



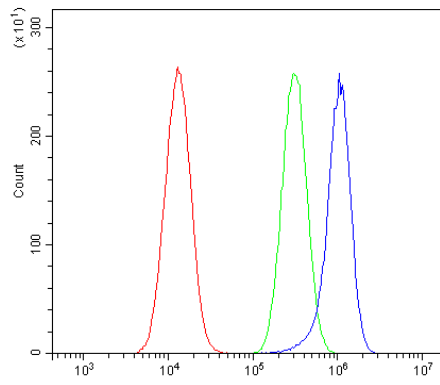
ARG42702 anti-EDNRA / Endothelin A receptor antibody IHC-P image

Immunohistochemistry: Paraffin-embedded Human lung cancer tissue. Antigen Retrieval: Heat mediation was performed in EDTA buffer (pH 8.0). The tissue section was blocked with 10% goat serum. The tissue section was then stained with ARG42702 anti-EDNRA / Endothelin A receptor antibody at 1 µg/ml dilution, overnight at 4°C.



ARG42702 anti-EDNRA / Endothelin A receptor antibody WB image

Western blot: 50 µg of samples under reducing condition. HEK293 whole cell lysate stained with ARG42702 anti-EDNRA / Endothelin A receptor antibody at 0.5 µg/ml dilution, overnight at 4°C.



#### ARG42702 anti-EDNRA / Endothelin A receptor antibody FACS image

Flow Cytometry: A549 cells were blocked with 10% normal goat serum and then stained with ARG42702 anti-EDNRA / Endothelin A receptor antibody (blue) at  $1 \mu\text{g}/10^6$  cells for 30 min at  $20^\circ\text{C}$ , followed by incubation with DyLight<sup>®</sup>488 labelled secondary antibody. Isotype control antibody (green) was rabbit IgG ( $1 \mu\text{g}/10^6$  cells) used under the same conditions. Unlabelled sample (red) was also used as a control.