

**ARG42678**  
**anti-ELAVL2 + ELAVL4 antibody**Package: 100 µl  
Store at: -20°C

### Summary

Product Description	Rabbit Polyclonal antibody recognizes ELAVL2 + ELAVL4
Tested Reactivity	Ms, Rat
Tested Application	ICC/IF, IHC-P, WB
Host	Rabbit
Clonality	Polyclonal
Isotype	IgG
Target Name	ELAVL2 + ELAVL4
Species	Human
Immunogen	Recombinant fusion protein corresponding to aa. 1-366 of Human ELAVL4 (NP_001138246.1).
Conjugation	Un-conjugated
Alternate Names	ELAVL2: HuB; ELAV-like neuronal protein 1; HUB; Hu-antigen B; Nervous system-specific RNA-binding protein Hel-N1; HELN1; HEL-N1; ELAV-like protein 2 ELAVL4: HUD; HuD; Hu-antigen D; Paraneoplastic encephalomyelitis antigen HuD; PNEM; ELAV-like protein 4

### Application Instructions

Application table	Application	Dilution
	ICC/IF	1:50 - 1:200
	IHC-P	1:50 - 1:200
	WB	1:500 - 1:2000

**Application Note** \* The dilutions indicate recommended starting dilutions and the optimal dilutions or concentrations should be determined by the scientist.

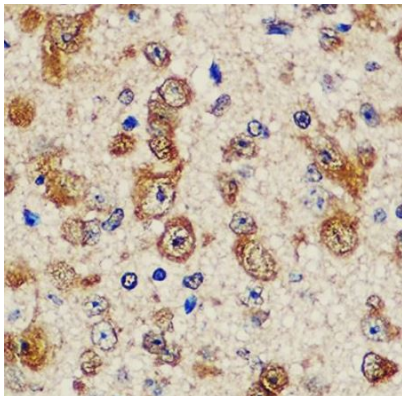
### Properties

Form	Liquid
Purification	Affinity purified.
Buffer	PBS (pH 7.3), 0.02% Sodium azide and 50% Glycerol.
Preservative	0.02% Sodium azide
Stabilizer	50% Glycerol
Storage instruction	For continuous use, store undiluted antibody at 2-8°C for up to a week. For long-term storage, aliquot and store at -20°C. Storage in frost free freezers is not recommended. Avoid repeated freeze/thaw cycles. Suggest spin the vial prior to opening. The antibody solution should be gently mixed before use.
Note	For laboratory research only, not for drug, diagnostic or other use.

## Bioinformation

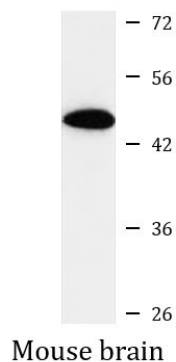
Gene Symbol	ELAVL2; ELAVL4
Gene Full Name	ELAV like neuron-specific RNA binding protein 2 ELAV like neuron-specific RNA binding protein 4
Background	ELAVL2: The protein encoded by this gene is a neural-specific RNA-binding protein that is known to bind to several 3' UTRs, including its own and also that of FOS and ID. The encoded protein may recognize a GAAA motif in the RNA. Three transcript variants encoding two different isoforms have been found for this gene. [provided by RefSeq, Jan 2010]
Function	ELAVL2: RNA-binding protein that binds to the 3' untranslated region (3'UTR) of target mRNAs (By similarity). Seems to recognize a GAAA motif (By similarity). Can bind to its own 3'UTR, the FOS 3'UTR and the ID 3'UTR (By similarity). [UniProt]
Calculated Mw	ELAVL2: 40 kDa ELAVL4: 42 kDa
PTM	ELAVL4: Methylation at Arg-243 by CARM1 weakens protective binding to the 3'-UTR of CDKN1A mRNA and down-regulates CDKN1A protein expression, thereby maintaining cells in a proliferative state. Methylation is inhibited by NGF, which facilitates neurite outgrowth (By similarity). [UniProt]

## Images



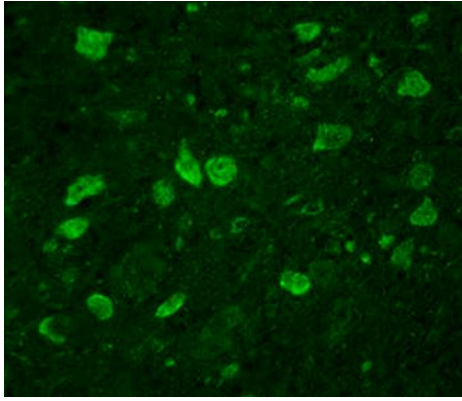
ARG42678 anti-ELAVL2 + ELAVL4 antibody IHC-P image

Immunohistochemistry: Paraffin-embedded Mouse brain tissue stained with ARG42678 anti-ELAVL2 + ELAVL4 antibody at 1:100 dilution.



ARG42678 anti-ELAVL2 + ELAVL4 antibody WB image

Western blot: 25 µg of Mouse brain lysate stained with ARG42678 anti-ELAVL2 + ELAVL4 antibody at 1:1000 dilution.



ARG42678 anti-ELAVL2 + ELAVL4 antibody IHC image

Immunohistochemistry: Rat brain tissue stained with ARG42678 anti-ELAVL2 + ELAVL4 antibody at 1:100 dilution.