

## ARG42648 anti-Arylsulfatase A antibody

Package: 50 µg  
Store at: -20°C

### Summary

Product Description	Rabbit Polyclonal antibody recognizes Arylsulfatase A
Tested Reactivity	Hu, Ms, Rat
Tested Application	FACS, ICC/IF, IHC-P, WB
Host	Rabbit
Clonality	Polyclonal
Isotype	IgG
Target Name	Arylsulfatase A
Species	Human
Immunogen	Synthetic peptide corresponding to aa. 454-482 of Human Arylsulfatase A. (QALKQLQLLKAQLDAAVTFGPSQVARGED)
Conjugation	Un-conjugated
Alternate Names	ASA; Cerebrosidase-sulfatase; EC 3.1.6.8; Arylsulfatase A; MLD

### Application Instructions

Application table	Application	Dilution
	FACS	1:150 - 1:500
	ICC/IF	1:200 - 1:1000
	IHC-P	1:200 - 1:1000
	WB	1:500 - 1:2000
Application Note	IHC-P: Antigen Retrieval: Heat mediation was performed in Citrate buffer (pH 6.0) for 20 min. * The dilutions indicate recommended starting dilutions and the optimal dilutions or concentrations should be determined by the scientist.	
Observed Size	~ 58 kDa	

### Properties

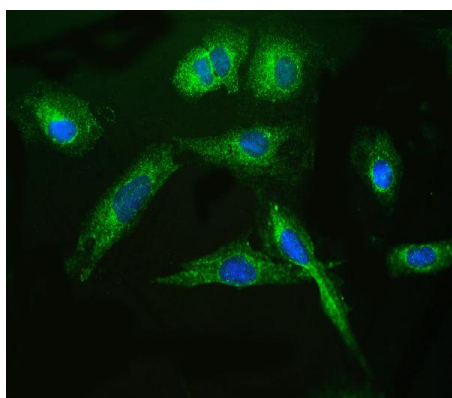
Form	Liquid
Purification	Affinity purification with immunogen.
Buffer	0.2% Na <sub>2</sub> HPO <sub>4</sub> , 0.9% NaCl, 0.05% Sodium azide and 5% BSA.
Preservative	0.05% Sodium azide
Stabilizer	5% BSA
Concentration	0.5 mg/ml

<b>Storage instruction</b>	For continuous use, store undiluted antibody at 2-8°C for up to a week. For long-term storage, aliquot and store at -20°C or below. Storage in frost free freezers is not recommended. Avoid repeated freeze/thaw cycles. Suggest spin the vial prior to opening. The antibody solution should be gently mixed before use.
<b>Note</b>	For laboratory research only, not for drug, diagnostic or other use.

## Bioinformation

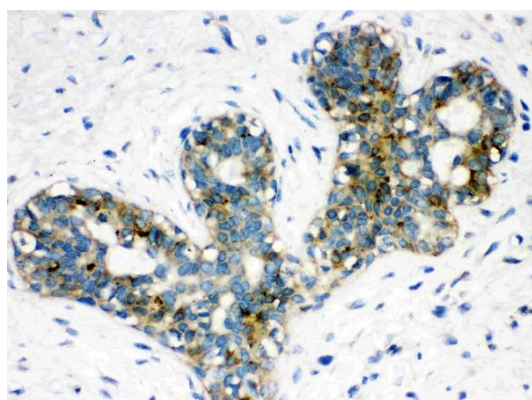
<b>Gene Symbol</b>	ARSA
<b>Gene Full Name</b>	arylsulfatase A
<b>Background</b>	The protein encoded by this gene hydrolyzes cerebroside sulfate to cerebroside and sulfate. Defects in this gene lead to metachromatic leucodystrophy (MLD), a progressive demyelination disease which results in a variety of neurological symptoms and ultimately death. Alternatively spliced transcript variants have been described for this gene. [provided by RefSeq, Dec 2010]
<b>Function</b>	Hydrolyzes cerebroside sulfate. [UniProt]
<b>Calculated Mw</b>	54 kDa
<b>PTM</b>	The conversion to 3-oxoalanine (also known as C-formylglycine, FGly), of a serine or cysteine residue in prokaryotes and of a cysteine residue in eukaryotes, is critical for catalytic activity. This post-translational modification is severely defective in multiple sulfatase deficiency (MSD). [UniProt]
<b>Cellular Localization</b>	Lysosome. [UniProt]

## Images



ARG42648 anti-Arylsulfatase A antibody ICC/IF image

Immunofluorescence: U2OS cells stained with ARG42648 anti-Arylsulfatase A antibody (green) at 2 µg/ml dilution, overnight at 4°C. DAPI (blue) for nuclear staining.

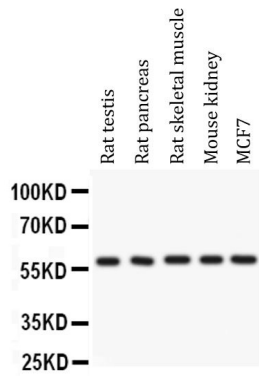


ARG42648 anti-Arylsulfatase A antibody IHC-P image

Immunohistochemistry: Paraffin-embedded Human mammary cancer tissue. Antigen Retrieval: Heat mediation was performed in Citrate buffer (pH 6.0) for 20 min. The tissue section was blocked with 10% goat serum. The tissue section was then stained with ARG42648 anti-Arylsulfatase A antibody at 1 µg/ml dilution, overnight at 4°C.

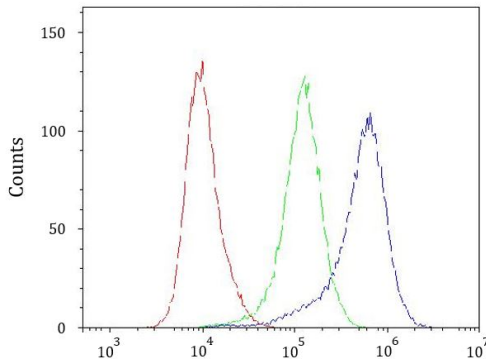
### ARG42648 anti-Arylsulfatase A antibody WB image

Western blot: 50 µg of samples under reducing conditions. Rat testis, Rat pancreas, Rat skeletal muscle, Mouse kidney and MCF7 whole cell lysates stained with ARG42648 anti-Arylsulfatase A antibody at 0.5 µg/ml dilution, overnight at 4°C.



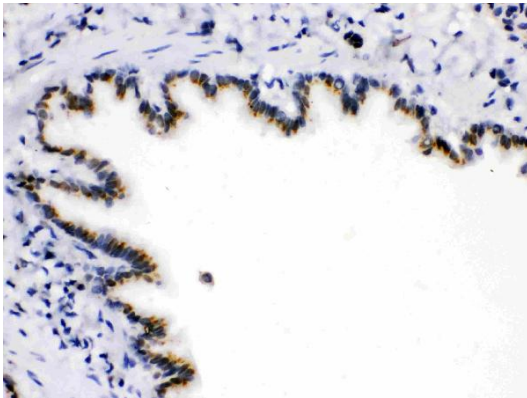
### ARG42648 anti-Arylsulfatase A antibody FACS image

Flow Cytometry: HeLa cells were blocked with 10% normal goat serum and then stained with ARG42648 anti-Arylsulfatase A antibody (blue) at 1 µg/10<sup>6</sup> cells for 30 min at 20°C, followed by incubation with DyLight<sup>®</sup>488 labelled secondary antibody. Isotype control antibody (green) was Rabbit IgG (1 µg/10<sup>6</sup> cells) used under the same conditions. Unlabelled sample (red) was also used as a control.



### ARG42648 anti-Arylsulfatase A antibody IHC-P image

Immunohistochemistry: Paraffin-embedded Rat lung tissue. Antigen Retrieval: Heat mediation was performed in Citrate buffer (pH 6.0) for 20 min. The tissue section was blocked with 10% goat serum. The tissue section was then stained with ARG42648 anti-Arylsulfatase A antibody at 1 µg/ml dilution, overnight at 4°C.



### ARG42648 anti-Arylsulfatase A antibody FACS image

Flow Cytometry: PC-3 cells were blocked with 10% normal goat serum and then stained with ARG42648 anti-Arylsulfatase A antibody (blue) at 1 µg/10<sup>6</sup> cells for 30 min at 20°C, followed by incubation with DyLight<sup>®</sup>488 labelled secondary antibody. Isotype control antibody (green) was Rabbit IgG (1 µg/10<sup>6</sup> cells) used under the same conditions. Unlabelled sample (red) was also used as a control.

