

## ARG42599 anti-CutA antibody

Package: 50 µl  
Store at: -20°C

### Summary

Product Description	Rabbit Polyclonal antibody recognizes CutA
Tested Reactivity	Hu
Predict Reactivity	Ms, Rat, Cow, Dog, Gpig, Hrs, Rb
Tested Application	IHC-P, WB
Host	Rabbit
Clonality	Polyclonal
Isotype	IgG
Target Name	CutA
Species	Human
Immunogen	Synthetic peptide around the center region of Human CutA. (within the following region: AFVTCPNEKVAKEIARAVVEKRLAACVNLIPQITSYEWKGIKIEEDSEVL)
Conjugation	Un-conjugated
Alternate Names	Acetylcholinesterase-associated protein; Brain acetylcholinesterase putative membrane anchor; Protein CutA; ACHAP; C6orf82

### Application Instructions

Predict Reactivity Note	Predicted Homology Based on Immunogen Sequence: Cow: 100%; Dog: 100%; Guinea pig: 100%; Horse: 100%; Mouse: 100%; Rabbit: 100%; Rat: 100%						
Application table	<table><thead><tr><th>Application</th><th>Dilution</th></tr></thead><tbody><tr><td>IHC-P</td><td>10 µg/ml</td></tr><tr><td>WB</td><td>0.2 - 1 µg/ml</td></tr></tbody></table>	Application	Dilution	IHC-P	10 µg/ml	WB	0.2 - 1 µg/ml
Application	Dilution						
IHC-P	10 µg/ml						
WB	0.2 - 1 µg/ml						
Application Note	IHC-P: Antigen Retrieval: Heat mediation. * The dilutions indicate recommended starting dilutions and the optimal dilutions or concentrations should be determined by the scientist.						
Positive Control	THP-1						
Observed Size	~ 20 kDa						

### Properties

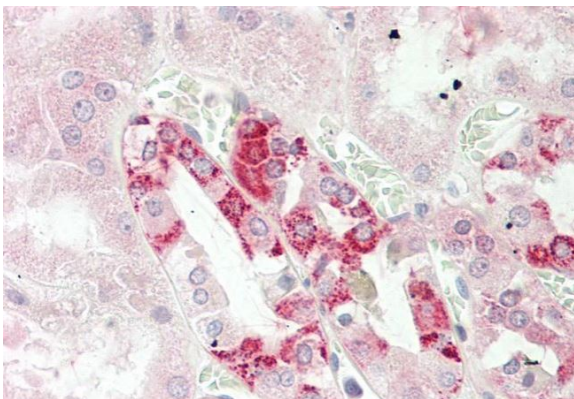
Form	Liquid
Purification	Affinity purified.
Buffer	PBS, 0.09% (w/v) Sodium azide and 2% Sucrose.
Preservative	0.09% (w/v) Sodium azide

Stabilizer	2% Sucrose
Concentration	Batch dependent: 0.5 - 1 mg/ml
Storage instruction	For continuous use, store undiluted antibody at 2-8°C for up to a week. For long-term storage, aliquot and store at -20°C or below. Storage in frost free freezers is not recommended. Avoid repeated freeze/thaw cycles. Suggest spin the vial prior to opening. The antibody solution should be gently mixed before use.
Note	For laboratory research only, not for drug, diagnostic or other use.

## Bioinformation

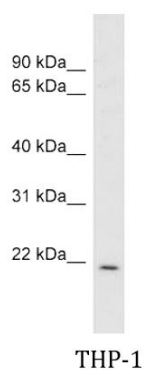
Gene Symbol	CUTA
Gene Full Name	cutA divalent cation tolerance homolog (E. coli)
Function	May form part of a complex of membrane proteins attached to acetylcholinesterase (AChE). [UniProt]
Calculated Mw	19 kDa
PTM	O-glycosylated. [UniProt]

## Images



ARG42599 anti-CutA antibody IHC-P image

Immunohistochemistry: Formalin-fixed and paraffin-embedded Human kidney tissue. Antigen Retrieval: Heat mediation. The tissue section was stained with ARG42599 anti-CutA antibody at 10 µg/ml dilution.



ARG42599 anti-CutA antibody WB image

Western blot: THP-1 cell lysate stained with ARG42599 anti-CutA antibody at 0.2 - 1 µg/ml dilution.