

## ARG42597 anti-CutA antibody

Package: 50 µg  
Store at: -20°C

### Summary

Product Description	Goat Polyclonal antibody recognizes CutA
Tested Reactivity	Hu
Tested Application	IHC-P, WB
Specificity	This antibody is expected to recognize all reported isoforms (NP_001014433.1; NP_057005.1; NP_001014840.1). Reported variants represent identical protein: NP_001014837.1, NP_001014838.1, NP_057005.1.
Host	Goat
Clonality	Polyclonal
Isotype	IgG
Target Name	CutA
Species	Human
Immunogen	Synthetic peptide around the C-terminus of Human CutA. (C-QVTESVSDSIT) (NP_001014433.1; NP_057005.1; NP_001014840.1)
Conjugation	Un-conjugated
Alternate Names	Acetylcholinesterase-associated protein; Brain acetylcholinesterase putative membrane anchor; Protein CutA; ACHAP; C6orf82

### Application Instructions

Application table	Application	Dilution
	IHC-P	5 µg/ml
	WB	1 - 3 µg/ml
Application Note	WB: Recommend incubate at RT for 1h. IHC-P: Antigen Retrieval: Steam tissue section in Citrate buffer (pH 6.0). * The dilutions indicate recommended starting dilutions and the optimal dilutions or concentrations should be determined by the scientist.	
Positive Control	Kelly	
Observed Size	~ 16 kDa	

### Properties

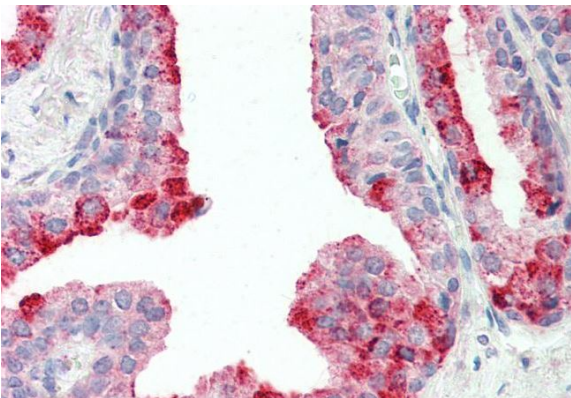
Form	Liquid
Purification	Ammonium sulphate precipitation followed by affinity purification with immunogen.
Buffer	Tris saline (pH 7.3), 0.02% Sodium azide and 0.5% BSA.
Preservative	0.02% Sodium azide

Stabilizer	0.5% BSA
Concentration	0.5 mg/ml
Storage instruction	For continuous use, store undiluted antibody at 2-8°C for up to a week. For long-term storage, aliquot and store at -20°C or below. Storage in frost free freezers is not recommended. Avoid repeated freeze/thaw cycles. Suggest spin the vial prior to opening. The antibody solution should be gently mixed before use.
Note	For laboratory research only, not for drug, diagnostic or other use.

## Bioinformation

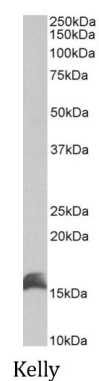
Gene Symbol	CUTA
Gene Full Name	cutA divalent cation tolerance homolog (E. coli)
Function	May form part of a complex of membrane proteins attached to acetylcholinesterase (AChE). [UniProt]
Calculated Mw	Isoform A: 21 kDa Isoform B: 19 kDa Isoform C: 17 kDa
PTM	O-glycosylated. [UniProt]

## Images



ARG42597 anti-CutA antibody IHC-P image

Immunohistochemistry: Paraffin-embedded Human prostate tissue. Antigen Retrieval: Steam tissue section in Citrate buffer (pH 6.0). The tissue section was stained with ARG42597 anti-CutA antibody at 5 µg/ml dilution followed by AP-staining.



ARG42597 anti-CutA antibody WB image

Western blot: 35 µg of Kelly cell lysate (in RIPA buffer) stained with ARG42597 anti-CutA antibody at 1 µg/ml dilution and incubated at RT for 1 hour.