

ARG42590 anti-CHM / REP1 antibody

Package: 50 µg
Store at: -20°C

Summary

Product Description	Rabbit Polyclonal antibody recognizes CHM / REP1
Tested Reactivity	Hu, Ms, Rat
Tested Application	FACS, ICC/IF, IHC-P, WB
Host	Rabbit
Clonality	Polyclonal
Isotype	IgG
Target Name	CHM / REP1
Species	Human
Immunogen	Synthetic peptide corresponding to a sequence of Human CHM / REP1. (QDQILENEEAIALSRKDKTIQHVEVFCYASQDLHED)
Conjugation	Un-conjugated
Alternate Names	Rab proteins geranylgeranyltransferase component A 1; GGTA; TCD protein; HSD-32; DXS540; REP-1; TCD; Rab escort protein 1; Choroideremia protein

Application Instructions

Application table	Application	Dilution
	FACS	1:150 - 1:500
	ICC/IF	1:200 - 1:1000
	IHC-P	1:200 - 1:1000
	WB	1:500 - 1:2000
Application Note	IHC-P: Antigen Retrieval: Heat mediation was performed in Citrate buffer (pH 6.0) for 20 min. * The dilutions indicate recommended starting dilutions and the optimal dilutions or concentrations should be determined by the scientist.	
Observed Size	~ 73 kDa	

Properties

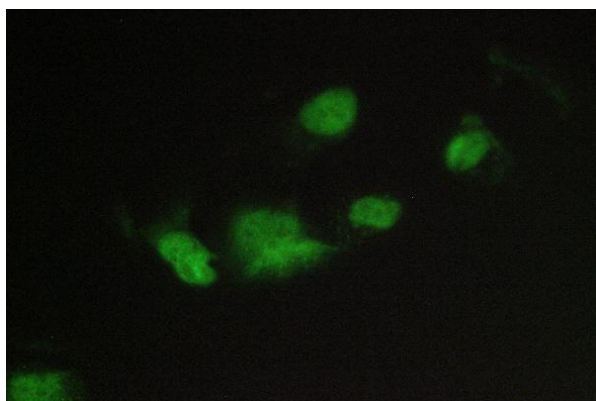
Form	Liquid
Purification	Affinity purification with immunogen.
Buffer	0.2% Na ₂ HPO ₄ , 0.9% NaCl, 0.05% Sodium azide and 4% Trehalose.
Preservative	0.05% Sodium azide
Stabilizer	4% Trehalose
Concentration	0.5 mg/ml

Storage instruction	For continuous use, store undiluted antibody at 2-8°C for up to a week. For long-term storage, aliquot and store at -20°C or below. Storage in frost free freezers is not recommended. Avoid repeated freeze/thaw cycles. Suggest spin the vial prior to opening. The antibody solution should be gently mixed before use.
Note	For laboratory research only, not for drug, diagnostic or other use.

Bioinformation

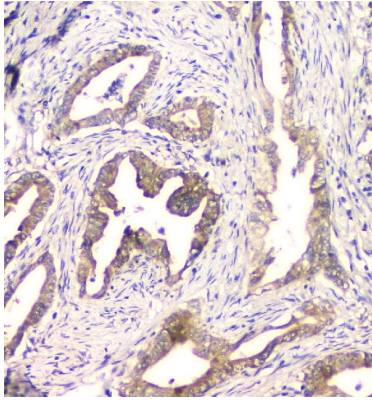
Gene Symbol	CHM
Gene Full Name	choroideremia (Rab escort protein 1)
Background	This gene encodes component A of the RAB geranylgeranyl transferase holoenzyme. In the dimeric holoenzyme, this subunit binds unprenylated Rab GTPases and then presents them to the catalytic Rab GGTase subunit for the geranylgeranyl transfer reaction. Rab GTPases need to be geranylgeranylated on either one or two cysteine residues in their C-terminus to localize to the correct intracellular membrane. Mutations in this gene are a cause of choroideremia; also known as tapetochoroidal dystrophy (TCD). This X-linked disease is characterized by progressive dystrophy of the choroid, retinal pigment epithelium and retina. Alternatively spliced transcript variants have been found for this gene. [provided by RefSeq, Mar 2016]
Function	Substrate-binding subunit of the Rab geranylgeranyltransferase (GGTase) complex. Binds unprenylated Rab proteins and presents the substrate peptide to the catalytic component B composed of RABGGTA and RABGGTB, and remains bound to it after the geranylgeranyl transfer reaction. The component A is thought to be regenerated by transferring its prenylated Rab back to the donor membrane. Besides, a pre-formed complex consisting of CHM and the Rab GGTase dimer (RGGT or component B) can bind to and prenylate Rab proteins; this alternative pathway is proposed to be the predominant pathway for Rab protein geranylgeranylation. [UniProt]
Calculated Mw	73 kDa
Cellular Localization	Cytoplasm, cytosol. [UniProt]

Images



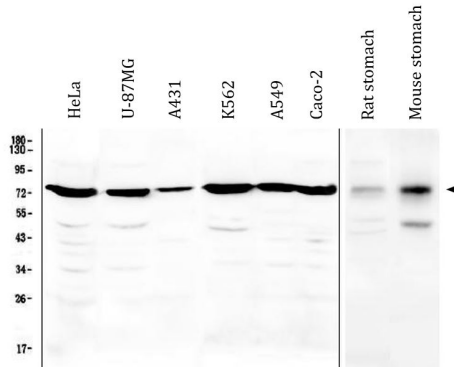
ARG42590 anti-CHM / REP1 antibody ICC/IF image

Immunofluorescence: A431 cells were blocked with 10% goat serum and then stained with ARG42590 anti-CHM / REP1 antibody at 2 µg/ml dilution, overnight at 4°C.



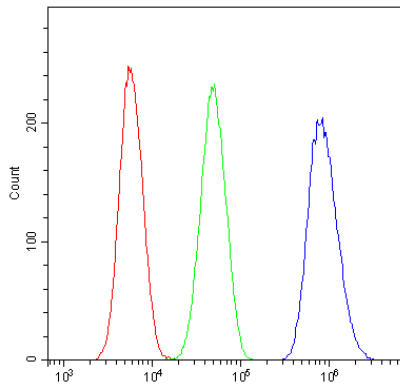
ARG42590 anti-CHM / REP1 antibody IHC-P image

Immunohistochemistry: Paraffin-embedded Human intestinal cancer tissue. Antigen Retrieval: Heat mediation was performed in Citrate buffer (pH 6.0) for 20 min. The tissue section was blocked with 10% goat serum. The tissue section was then stained with ARG42590 anti-CHM / REP1 antibody at 1 $\mu\text{g}/\text{ml}$ dilution, overnight at 4°C.



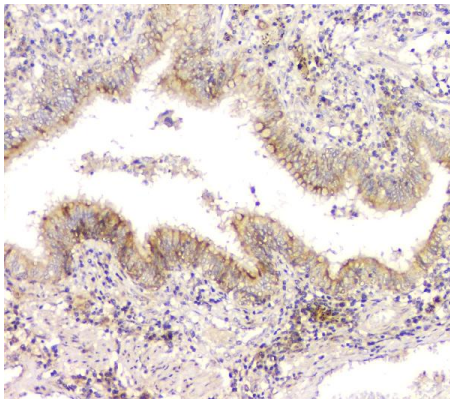
ARG42590 anti-CHM / REP1 antibody WB image

Western blot: 50 μg of samples under reducing conditions. HeLa, U-87MG, A431, K562, A549, Caco-2, Rat stomach and Mouse stomach lysates stained with ARG42590 anti-CHM / REP1 antibody at 0.5 $\mu\text{g}/\text{ml}$ dilution, overnight at 4°C.



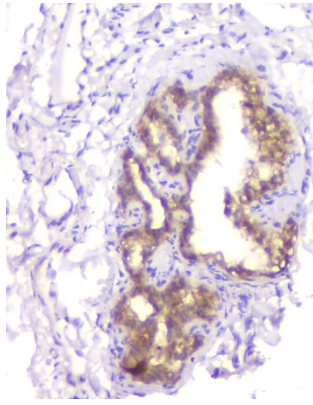
ARG42590 anti-CHM / REP1 antibody FACS image

Flow Cytometry: SiHa cells were blocked with 10% normal goat serum and then stained with ARG42590 anti-CHM / REP1 antibody (blue) at 1 $\mu\text{g}/10^6$ cells for 30 min at 20°C, followed by incubation with DyLight[®]488 labelled secondary antibody. Isotype control antibody (green) was Rabbit IgG (1 $\mu\text{g}/10^6$ cells) used under the same conditions. Unlabelled sample (red) was also used as a control.



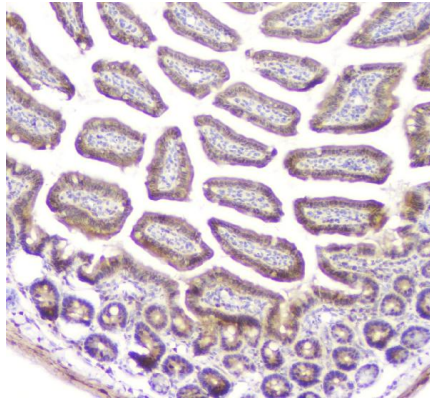
ARG42590 anti-CHM / REP1 antibody IHC-P image

Immunohistochemistry: Paraffin-embedded Human lung cancer tissue. Antigen Retrieval: Heat mediation was performed in Citrate buffer (pH 6.0) for 20 min. The tissue section was blocked with 10% goat serum. The tissue section was then stained with ARG42590 anti-CHM / REP1 antibody at 1 $\mu\text{g}/\text{ml}$ dilution, overnight at 4°C.



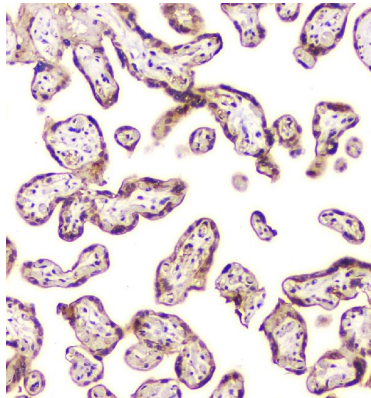
ARG42590 anti-CHM / REP1 antibody IHC-P image

Immunohistochemistry: Paraffin-embedded Human thyroid cancer tissue. Antigen Retrieval: Heat mediation was performed in Citrate buffer (pH 6.0) for 20 min. The tissue section was blocked with 10% goat serum. The tissue section was then stained with ARG42590 anti-CHM / REP1 antibody at 1 μ g/ml dilution, overnight at 4°C.



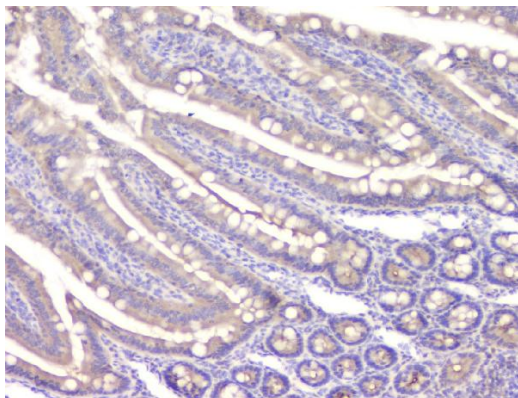
ARG42590 anti-CHM / REP1 antibody IHC-P image

Immunohistochemistry: Paraffin-embedded Mouse small intestine tissue. Antigen Retrieval: Heat mediation was performed in Citrate buffer (pH 6.0) for 20 min. The tissue section was blocked with 10% goat serum. The tissue section was then stained with ARG42590 anti-CHM / REP1 antibody at 1 μ g/ml dilution, overnight at 4°C.



ARG42590 anti-CHM / REP1 antibody IHC-P image

Immunohistochemistry: Paraffin-embedded Human placenta tissue. Antigen Retrieval: Heat mediation was performed in Citrate buffer (pH 6.0) for 20 min. The tissue section was blocked with 10% goat serum. The tissue section was then stained with ARG42590 anti-CHM / REP1 antibody at 1 μ g/ml dilution, overnight at 4°C.



ARG42590 anti-CHM / REP1 antibody IHC-P image

Immunohistochemistry: Paraffin-embedded Rat small intestine tissue. Antigen Retrieval: Heat mediation was performed in Citrate buffer (pH 6.0) for 20 min. The tissue section was blocked with 10% goat serum. The tissue section was then stained with ARG42590 anti-CHM / REP1 antibody at 1 μ g/ml dilution, overnight at 4°C.