

## ARG42567 anti-NAA25 antibody

Package: 100 µl  
Store at: -20°C

### Summary

Product Description	Rabbit Polyclonal antibody recognizes NAA25
Tested Reactivity	Ms, Rat
Tested Application	WB
Host	Rabbit
Clonality	Polyclonal
Isotype	IgG
Target Name	NAA25
Species	Human
Immunogen	Recombinant fusion protein corresponding to aa. 703-972 of Human NAA25 (NP_079229.2).
Conjugation	Un-conjugated
Alternate Names	N-terminal acetyltransferase B complex subunit NAA25; NAP1; NatB complex subunit MDM20; p120; MDM20; N-terminal acetyltransferase B complex subunit MDM20; Mitochondrial distribution and morphology protein 20; N-alpha-acetyltransferase 25, NatB auxiliary subunit; C12orf30

### Application Instructions

Application table	Application	Dilution
	WB	1:500 - 1:2000
Application Note	* The dilutions indicate recommended starting dilutions and the optimal dilutions or concentrations should be determined by the scientist.	
Positive Control	Mouse uterus	
Observed Size	~ 112 kDa	

### Properties

Form	Liquid
Purification	Affinity purified.
Buffer	PBS (pH 7.3), 0.02% Sodium azide and 50% Glycerol.
Preservative	0.02% Sodium azide
Stabilizer	50% Glycerol
Storage instruction	For continuous use, store undiluted antibody at 2-8°C for up to a week. For long-term storage, aliquot and store at -20°C. Storage in frost free freezers is not recommended. Avoid repeated freeze/thaw cycles. Suggest spin the vial prior to opening. The antibody solution should be gently mixed before use.
Note	For laboratory research only, not for drug, diagnostic or other use.

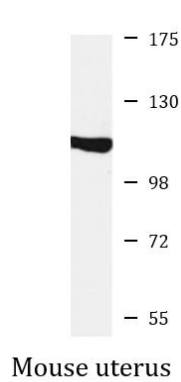
## Bioinformation

---

Gene Symbol	NAA25
Gene Full Name	N(alpha)-acetyltransferase 25, NatB auxiliary subunit
Background	This gene encodes the auxiliary subunit of the heteromeric N-terminal acetyltransferase B complex. This complex acetylates methionine residues that are followed by acidic or asparagine residues. [provided by RefSeq, Mar 2010]
Function	Non-catalytic subunit of the NatB complex which catalyzes acetylation of the N-terminal methionine residues of peptides beginning with Met-Asp-Glu. May play a role in normal cell-cycle progression. [UniProt]
Calculated Mw	112 kDa
Cellular Localization	Cytoplasm. [UniProt]

## Images

---



ARG42567 anti-NAA25 antibody WB image

Western blot: 25 µg of Mouse uterus lysate stained with ARG42567 anti-NAA25 antibody at 1:1000 dilution.