

## ARG42566 anti-NAA20 / NAT5 antibody

Package: 100 µl  
Store at: -20°C

### Summary

Product Description	Rabbit Polyclonal antibody recognizes NAA20 / NAT5
Tested Reactivity	Hu, Ms, Rat
Tested Application	IHC-P, IP, WB
Host	Rabbit
Clonality	Polyclonal
Isotype	IgG
Target Name	NAA20 / NAT5
Species	Human
Immunogen	Recombinant fusion protein corresponding to aa. 49-178 of Human NAA20 / NAT5 (NP_057184.1).
Conjugation	Un-conjugated
Alternate Names	NatB complex subunit NAT5; N-terminal acetyltransferase B complex catalytic subunit NAA20; Methionine N-acetyltransferase; NAT3; NAT5P; dJ1002M8.1; NAT5; EC 2.3.1.88; NAT3P; N-acetyltransferase 5; N-terminal acetyltransferase B complex catalytic subunit NAT5; N-alpha-acetyltransferase 20; NatB catalytic subunit

### Application Instructions

Application table	Application	Dilution
	IHC-P	1:50 - 1:200
	IP	1:50 - 1:200
	WB	1:500 - 1:2000
Application Note	* The dilutions indicate recommended starting dilutions and the optimal dilutions or concentrations should be determined by the scientist.	
Positive Control	Mouse kidney	
Observed Size	~ 17 kDa	

### Properties

Form	Liquid
Purification	Affinity purified.
Buffer	PBS (pH 7.3), 0.02% Sodium azide and 50% Glycerol.
Preservative	0.02% Sodium azide
Stabilizer	50% Glycerol
Storage instruction	For continuous use, store undiluted antibody at 2-8°C for up to a week. For long-term storage, aliquot and store at -20°C. Storage in frost free freezers is not recommended. Avoid repeated freeze/thaw

cycles. Suggest spin the vial prior to opening. The antibody solution should be gently mixed before use.

**Note**

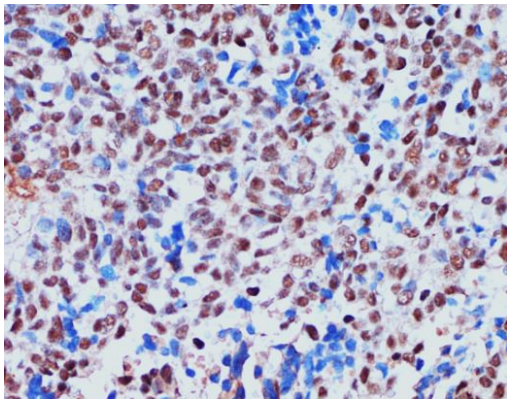
For laboratory research only, not for drug, diagnostic or other use.

## Bioinformation

---

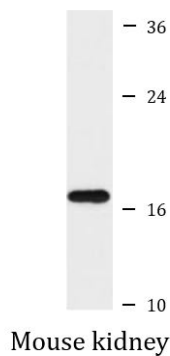
Gene Symbol	NAA20
Gene Full Name	N(alpha)-acetyltransferase 20, NatB catalytic subunit
Background	NAT5 is a component of N-acetyltransferase complex B (NatB). Human NatB performs cotranslational N(alpha)-terminal acetylation of methionine residues when they are followed by asparagine (Starheim et al., 2008 [PubMed 18570629]).[supplied by OMIM, Apr 2009]
Function	Catalytic subunit of the NatB complex which catalyzes acetylation of the N-terminal methionine residues of peptides beginning with Met-Asp, Met-Glu, Met-Asn and Met-Gln. Proteins with cell cycle functions are overrepresented in the pool of NatB substrates. Required for maintaining the structure and function of actomyosin fibers and for proper cellular migration. [UniProt]
Calculated Mw	20 kDa
Cellular Localization	Cytoplasm. Nucleus. [UniProt]

## Images



ARG42566 anti-NAA20 / NAT5 antibody IHC-P image

Immunohistochemistry: Paraffin-embedded Human oophoroma tissue stained with ARG42566 anti-NAA20 / NAT5 antibody at 1:100 dilution.



ARG42566 anti-NAA20 / NAT5 antibody WB image

Western blot: 25 µg of Mouse kidney lysate stained with ARG42566 anti-NAA20 / NAT5 antibody at 1:1000 dilution.

### ARG42566 anti-NAA20 / NAT5 antibody IP image

Immunoprecipitation: 200 µg extracts of MCF7 cells were immunoprecipitated and stained with ARG42566 anti-NAA20 / NAT5 antibody at 1:1000 dilution.

