

## ARG42532 anti-CD2 antibody

Package: 100 µg  
Store at: -20°C

### Summary

|                     |  |
|---------------------|--|
| Product Description | Goat Polyclonal antibody recognizes CD2  |
| Tested Reactivity   | Hu, Ms, Rat, Dog, Mk   |
| Tested Application  | WB   |
| Host                | Goat   |
| Clonality           | Polyclonal   |
| Isotype             | IgG  |
| Target Name         | CD2  |
| Species             | Human  |
| Immunogen           | Recombinant peptide within aa. 300 to the C-terminus of Human CD2.   |
| Conjugation         | Un-conjugated  |
| Alternate Names     | T-cell surface antigen T11/Leu-5; LFA-3 receptor; T-cell surface antigen CD2; SRBC; Erythrocyte receptor; CD antigen CD2; T11; Rosette receptor; LFA-2 |

### Application Instructions

| Application table | Application  | Dilution       |
|-------------------|--|----------------|
|                   | WB   | 1:500 - 1:5000 |
| Application Note  | * The dilutions indicate recommended starting dilutions and the optimal dilutions or concentrations should be determined by the scientist. |                |
| Positive Control  | Jurkat   |                |
| Observed Size     | ~ 50 kDa   |                |

### Properties

|                     |   |
|---------------------|---|
| Form                | Liquid  |
| Purification        | Affinity purification with immunogen.   |
| Buffer              | PBS, 0.05% Sodium azide and 20% Glycerol.   |
| Preservative        | 0.05% Sodium azide  |
| Stabilizer          | 20% Glycerol  |
| Concentration       | 4 mg/ml   |
| Storage instruction | For continuous use, store undiluted antibody at 2-8°C for up to a week. For long-term storage, aliquot and store at -20°C. Storage in frost free freezers is not recommended. Avoid repeated freeze/thaw cycles. Suggest spin the vial prior to opening. The antibody solution should be gently mixed before use. |
| Note                | For laboratory research only, not for drug, diagnostic or other use.  |

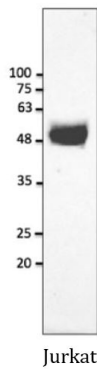
## Bioinformation

---

|                       |  |
|-----------------------|--|
| Gene Symbol           | CD2  |
| Gene Full Name        | CD2 molecule   |
| Background            | The protein encoded by this gene is a surface antigen found on all peripheral blood T-cells. The encoded protein interacts with LFA3 (CD58) on antigen presenting cells to optimize immune recognition. A locus control region (LCR) has been found in the 3' flanking sequence of this gene. [provided by RefSeq, Jun 2016] |
| Function              | CD2 interacts with lymphocyte function-associated antigen CD58 (LFA-3) and CD48/BCM1 to mediate adhesion between T-cells and other cell types. CD2 is implicated in the triggering of T-cells, the cytoplasmic domain is implicated in the signaling function. [UniProt]   |
| Calculated Mw         | 39 kDa   |
| Cellular Localization | Cell membrane; Single-pass type I membrane protein. [UniProt]  |

## Images

---



ARG42532 anti-CD2 antibody WB image

Western blot: 50 µg of Jurkat cell lysate stained with ARG42532 anti-CD2 antibody at 1:2500 dilution.