

ARG42521
anti-RAB27 antibodyPackage: 100 µg
Store at: -20°C

Summary

Product Description	Goat Polyclonal antibody recognizes RAB27
Tested Reactivity	Hu, Ms, Rat, Dog, Mk
Tested Application	ICC/IF, IHC-Fr, IHC-P, WB
Host	Goat
Clonality	Polyclonal
Isotype	IgG
Target Name	RAB27
Species	Mouse
Immunogen	Purified recombinant peptides within aa. 120 to the C-terminus of Mouse RAB27A and RAB27B.
Conjugation	Un-conjugated
Alternate Names	GS2; GTP-binding protein Ram; RAB27; RAM; Ras-related protein Rab-27A; HsT18676; Rab-27

Application Instructions

Application table	Application	Dilution
	ICC/IF	1:50 - 1:250
	IHC-Fr	1:50 - 1:400
	IHC-P	1:50 - 1:400
	WB	1:500 - 1:2000
Application Note	IHC-P: Antigen Retrieval: Heat-induced. * The dilutions indicate recommended starting dilutions and the optimal dilutions or concentrations should be determined by the scientist.	
Positive Control	Melan-ink and AtT-20	
Observed Size	~ 30 kDa	

Properties

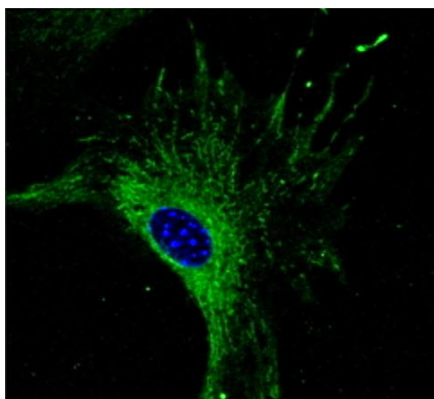
Form	Liquid
Purification	Affinity purification with immunogen.
Buffer	PBS, 0.05% Sodium azide and 20% Glycerol.
Preservative	0.05% Sodium azide
Stabilizer	20% Glycerol
Concentration	3 mg/ml

Storage instruction	For continuous use, store undiluted antibody at 2-8°C for up to a week. For long-term storage, aliquot and store at -20°C. Storage in frost free freezers is not recommended. Avoid repeated freeze/thaw cycles. Suggest spin the vial prior to opening. The antibody solution should be gently mixed before use.
Note	For laboratory research only, not for drug, diagnostic or other use.

Bioinformation

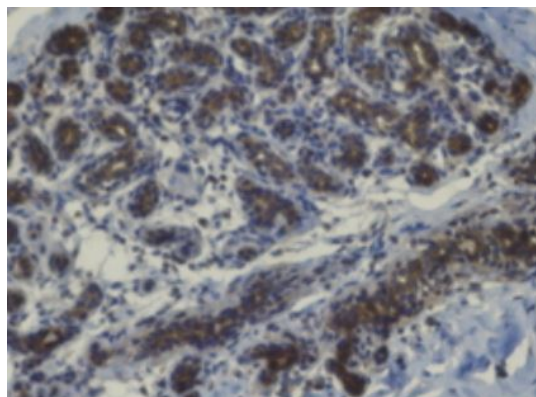
Gene Symbol	RAB27A
Gene Full Name	RAB27A, member RAS oncogene family
Background	The protein encoded by this gene belongs to the small GTPase superfamily, Rab family. The protein is membrane-bound and may be involved in protein transport and small GTPase mediated signal transduction. Mutations in this gene are associated with Griscelli syndrome type 2. Alternative splicing occurs at this locus and four transcript variants encoding the same protein have been identified. [provided by RefSeq, Jul 2008]
Function	Small GTPase which cycles between active GTP-bound and inactive GDP-bound states. In its active state, binds to a variety of effector proteins to regulate homeostasis of late endocytic pathway, including endosomal positioning, maturation and secretion (PubMed:30771381). Plays a role in cytotoxic granule exocytosis in lymphocytes. Required for both granule maturation and granule docking and priming at the immunologic synapse. [UniProt]
Calculated Mw	25 kDa
Cellular Localization	Membrane; Lipid-anchor. Melanosome. Late endosome. Lysosome. Note=Identified by mass spectrometry in melanosome fractions from stage I to stage IV (PubMed:12643545, PubMed:17081065). Localizes to endosomal exocytic vesicles (PubMed:17237785). [UniProt]

Images



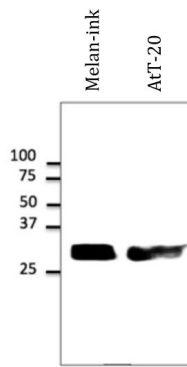
ARG42521 anti-RAB27 antibody ICC/IF image

Immunofluorescence: B6-RPE07 cells were stained with ARG42521 anti-RAB27 antibody (green) at 1:50 dilution. Nuclear staining (blue).



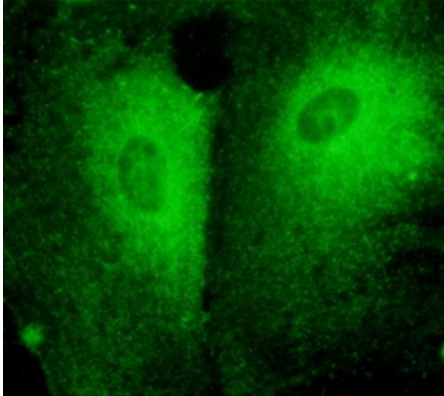
ARG42521 anti-RAB27 antibody IHC-P image

Immunohistochemistry: Formalin-fixed and paraffin-embedded Human mammary tissue. Antigen Retrieval: Heat-induced. The tissue section was stained with ARG42521 anti-RAB27 antibody at 1:200 dilution.



ARG42521 anti-RAB27 antibody WB image

Western blot: 50 μ g of Melan-ink and AtT-20 cell lysates stained with ARG42521 anti-RAB27 antibody at 1:500 dilution.



ARG42521 anti-RAB27 antibody ICC/IF image

Immunofluorescence: Primary RPE cells stained with ARG42521 anti-RAB27 antibody at 1:50 dilution.