

ARG42520 anti-RAB20 antibody

Package: 100 µg
Store at: -20°C

Summary

Product Description	Goat Polyclonal antibody recognizes RAB20
Tested Reactivity	Hu, Ms, Rat, Dog, Mk
Tested Application	WB
Host	Goat
Clonality	Polyclonal
Isotype	IgG
Target Name	RAB20
Species	Human
Immunogen	Purified recombinant peptide within aa. 130 to the C-terminus of Human RAB20.
Conjugation	Un-conjugated
Alternate Names	Ras-related protein Rab-20

Application Instructions

Application table	Application	Dilution
	WB	1:250 - 1:2000
Application Note	* The dilutions indicate recommended starting dilutions and the optimal dilutions or concentrations should be determined by the scientist.	
Positive Control	Kidney	
Observed Size	~ 26 kDa	

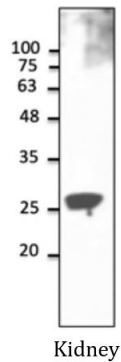
Properties

Form	Liquid
Purification	Affinity purification with immunogen.
Buffer	PBS, 0.05% Sodium azide and 20% Glycerol.
Preservative	0.05% Sodium azide
Stabilizer	20% Glycerol
Concentration	2 mg/ml
Storage instruction	For continuous use, store undiluted antibody at 2-8°C for up to a week. For long-term storage, aliquot and store at -20°C. Storage in frost free freezers is not recommended. Avoid repeated freeze/thaw cycles. Suggest spin the vial prior to opening. The antibody solution should be gently mixed before use.
Note	For laboratory research only, not for drug, diagnostic or other use.

Bioinformation

Gene Symbol	RAB20
Gene Full Name	RAB20, member RAS oncogene family
Function	Plays a role in apical endocytosis/recycling. Plays a role in the maturation and acidification of phagosomes that engulf pathogens, such as <i>S.aureus</i> and <i>M.tuberculosis</i> . Plays a role in the fusion of phagosomes with lysosomes. [UniProt]
Calculated Mw	26 kDa
Cellular Localization	Golgi apparatus. Cytoplasmic vesicle, phagosome. Cytoplasmic vesicle, phagosome membrane; Lipid-anchor; Cytoplasmic side. Note=Highly enriched on apical endocytic structures in polarized epithelial cells of kidney proximal tubules (By similarity). Recruited to phagosomes containing <i>S.aureus</i> or <i>M.tuberculosis</i> (PubMed:21255211). [UniProt]

Images



ARG42520 anti-RAB20 antibody WB image

Western blot: 50 µg of kidney lysate stained with ARG42520 anti-RAB20 antibody at 1:1000 dilution.