

ARG42504 anti-PDIA3 / ERp57 antibody

Package: 100 µg
Store at: -20°C

Summary

Product Description	Goat Polyclonal antibody recognizes PDIA3 / ERp57
Tested Reactivity	Hu, Ms, Rat, Dog, Mk
Tested Application	ICC/IF, IHC-Fr, IHC-P, WB
Host	Goat
Clonality	Polyclonal
Isotype	IgG
Target Name	PDIA3 / ERp57
Species	Human
Immunogen	Recombinante peptide within aa. 300 to the C-terminus of Human PDIA3 / ERp57.
Conjugation	Un-conjugated
Alternate Names	EC 5.3.4.1; Disulfide isomerase ER-60; HEL-S-93n; GRP57; p58; Endoplasmic reticulum resident protein 60; ER protein 57; ER protein 60; ERp57; GRP58; P58; 58 kDa glucose-regulated protein; 58 kDa microsomal protein; ER60; HEL-S-269; Protein disulfide-isomerase A3; PI-PLC; ERp60; ERp61; HsT17083; Endoplasmic reticulum resident protein 57

Application Instructions

Application table	Application	Dilution
	ICC/IF	1:50 - 1:500
	IHC-Fr	1:200 - 1:1000
	IHC-P	1:200 - 1:1000
	WB	1:500 - 1:2000
Application Note	* The dilutions indicate recommended starting dilutions and the optimal dilutions or concentrations should be determined by the scientist.	
Positive Control	Hepa and TR-iBRB	
Observed Size	~ 57 kDa	

Properties

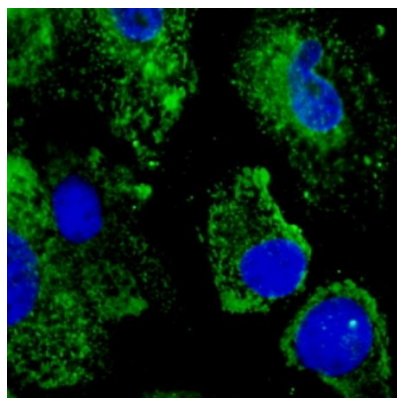
Form	Liquid
Purification	Affinity purification with immunogen.
Buffer	PBS, 0.05% Sodium azide and 20% Glycerol.
Preservative	0.05% Sodium azide
Stabilizer	20% Glycerol

Concentration	2 mg/ml
Storage instruction	For continuous use, store undiluted antibody at 2-8°C for up to a week. For long-term storage, aliquot and store at -20°C. Storage in frost free freezers is not recommended. Avoid repeated freeze/thaw cycles. Suggest spin the vial prior to opening. The antibody solution should be gently mixed before use.
Note	For laboratory research only, not for drug, diagnostic or other use.

Bioinformation

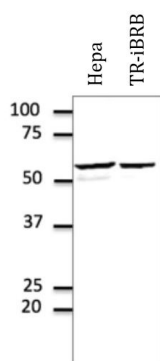
Gene Symbol	PDIA3
Gene Full Name	protein disulfide isomerase family A, member 3
Background	This gene encodes a protein of the endoplasmic reticulum that interacts with lectin chaperones calreticulin and calnexin to modulate folding of newly synthesized glycoproteins. The protein was once thought to be a phospholipase; however, it has been demonstrated that the protein actually has protein disulfide isomerase activity. It is thought that complexes of lectins and this protein mediate protein folding by promoting formation of disulfide bonds in their glycoprotein substrates. This protein also functions as a molecular chaperone that prevents the formation of protein aggregates. [provided by RefSeq, Dec 2016]
Calculated Mw	57 kDa
Cellular Localization	Endoplasmic reticulum. Endoplasmic reticulum lumen. Melanosome. Note=Identified by mass spectrometry in melanosome fractions from stage I to stage IV (PubMed:12643545). [UniProt]

Images



ARG42504 anti-PDIA3 / ERp57 antibody ICC/IF image

Immunofluorescence: Primary RPE cells were fixed with 4% PFA. Cells were stained with ARG42504 anti-PDIA3 / ERp57 antibody (green) at 1:100 dilution. Nuclear staining (blue).



ARG42504 anti-PDIA3 / ERp57 antibody WB image

Western blot: 100 µg of Hepa and TR-iBRB cell lysates stained with ARG42504 anti-PDIA3 / ERp57 antibody at 1:500 dilution.