

ARG42503
anti-CD5 antibodyPackage: 100 µg
Store at: -20°C

Summary

Product Description	Goat Polyclonal antibody recognizes CD5
Tested Reactivity	Hu, Ms, Rat, Dog, Mk
Tested Application	WB
Host	Goat
Clonality	Polyclonal
Isotype	IgG
Target Name	CD5
Species	Human
Immunogen	Recombinant peptide within aa. 105-210 of Human CD5.
Conjugation	Un-conjugated
Alternate Names	CD antigen CD5; Lymphocyte antigen T1/Leu-1; LEU1; T-cell surface glycoprotein CD5; T1

Application Instructions

Application table	Application	Dilution
	WB	1:500 - 1:2000
Application Note	* The dilutions indicate recommended starting dilutions and the optimal dilutions or concentrations should be determined by the scientist.	
Positive Control	PBMCs	
Observed Size	~ 70 kDa	

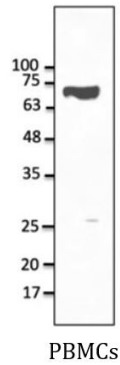
Properties

Form	Liquid
Purification	Affinity purification with immunogen.
Buffer	PBS, 0.05% Sodium azide and 20% Glycerol.
Preservative	0.05% Sodium azide
Stabilizer	20% Glycerol
Concentration	3 mg/ml
Storage instruction	For continuous use, store undiluted antibody at 2-8°C for up to a week. For long-term storage, aliquot and store at -20°C. Storage in frost free freezers is not recommended. Avoid repeated freeze/thaw cycles. Suggest spin the vial prior to opening. The antibody solution should be gently mixed before use.
Note	For laboratory research only, not for drug, diagnostic or other use.

Bioinformation

Gene Symbol	CD5
Gene Full Name	CD5 molecule
Background	This gene encodes a member of the scavenger receptor cysteine-rich (SRCR) superfamily. Members of this family are secreted or membrane-anchored proteins mainly found in cells associated with the immune system. This protein is a type-I transmembrane glycoprotein found on the surface of thymocytes, T lymphocytes and a subset of B lymphocytes. The encoded protein contains three SRCR domains and may act as a receptor to regulate T-cell proliferation. Alternative splicing results in multiple transcript variants encoding different isoforms. [provided by RefSeq, Oct 2016]
Function	May act as a receptor in regulating T-cell proliferation. [UniProt]
Calculated Mw	55 kDa
PTM	Phosphorylated on tyrosine residues by LYN; this creates binding sites for PTPN6/SHP-1. [UniProt]
Cellular Localization	Cell membrane; Single-pass type I membrane protein. [UniProt]

Images



ARG42503 anti-CD5 antibody WB image

Western blot: 50 µg of PBMCs stained with ARG42503 anti-CD5 antibody at 1:1000 dilution.