

ARG42443 anti-HLA ABCE antibody [TP25.99SF]

Package: 100 µg
Store at: -20°C

Summary

Product Description	Mouse Monoclonal antibody [TP25.99SF] recognizes HLA ABCE
Tested Reactivity	Hu
Tested Application	FACS, IHC-Fr, WB
Specificity	The mouse monoclonal antibody TP25.99SF recognizes an extracellular epitope on HLA-ABC and HLA-E molecules, but not HLA-G. It can be used for discrimination between HLA-G and other HLA-class I antigens.
Host	Mouse
Clonality	Monoclonal
Clone	TP25.99SF
Isotype	IgG1
Target Name	HLA ABCE
Species	Human
Immunogen	IFN-gamma-treated Human melanoma cells Colo 38.
Conjugation	Un-conjugated
Alternate Names	MHC class I antigen A*1; HLAA; HLA class I histocompatibility antigen, A-1 alpha chain

Application Instructions

Application table	Application	Dilution
	FACS	1 - 4 µg/ml
	IHC-Fr	Assay-dependent
	WB	Assay-dependent
Application Note	* The dilutions indicate recommended starting dilutions and the optimal dilutions or concentrations should be determined by the scientist.	

Properties

Form	Liquid
Purification	Purification with Protein A.
Buffer	PBS and 15 mM Sodium azide.
Preservative	15 mM Sodium azide
Concentration	1 mg/ml
Storage instruction	For continuous use, store undiluted antibody at 2-8°C for up to a week. For long-term storage, aliquot and store at -20°C or below. Storage in frost free freezers is not recommended. Avoid repeated freeze/thaw cycles. Suggest spin the vial prior to opening. The antibody solution should be gently mixed

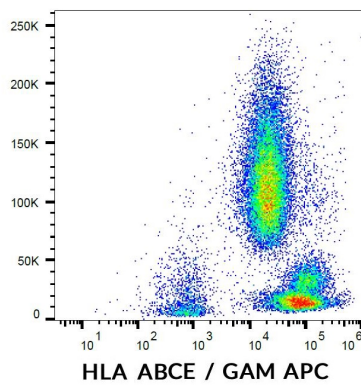
before use.

Note For laboratory research only, not for drug, diagnostic or other use.

Bioinformation

Gene Symbol	HLA-A
Gene Full Name	major histocompatibility complex, class I, A
PTM	Polyubiquitinated in a post ER compartment by interaction with human herpesvirus 8 MIR1 protein. This targets the protein for rapid degradation via the ubiquitin system (By similarity). [UniProt]
Cellular Localization	Membrane; Single-pass type I membrane protein. [UniProt]

Images



ARG42443 anti-HLA ABCE antibody [TP25.99SF] FACS image

Flow Cytometry: Human peripheral blood cells stained with ARG42443 anti-HLA ABCE antibody [TP25.99SF], followed by APC-conjugated Goat anti-Mouse antibody.