

**ARG42427**  
**anti-CD170 / Siglec 5 antibody [1A5]**Package: 100 µg  
Store at: -20°C

### Summary

Product Description	Mouse Monoclonal antibody [1A5] recognizes CD170 / Siglec 5
Tested Reactivity	Hu, NHuPrm
Tested Application	ELISA, FACS, ICC/IF, IHC-Fr, IP
Specificity	The mouse monoclonal antibody 1A5 recognizes an extracellular epitope of CD170 (Siglec-5, sialic acid binding Ig-like lectin 5), a transmembrane glycoprotein expressed strongly by neutrophils, macrophages activated during infections, monocytes, and dendritic cells. As in case with other anti-CD170 antibodies, this antibody crossreacts with Siglec-14, whose first two Ig domains are almost identical to those of CD170.
Host	Mouse
Clonality	Monoclonal
Clone	1A5
Isotype	IgG1
Target Name	CD170 / Siglec 5
Species	Human
Immunogen	Fusion protein composed of Human CD170 extracellular domain and Fc region of Human IgG1.
Conjugation	Un-conjugated
Alternate Names	OBBP2; OB-binding protein 2; CD170; Sialic acid-binding Ig-like lectin 5; SIGLEC-5; CD antigen CD170; CD33 antigen-like 2; OB-BP2; CD33L2; Siglec-5; Obesity-binding protein 2

### Application Instructions

Application table	Application	Dilution
	ELISA	Assay-dependent
	FACS	1 - 4 µg/ml
	ICC/IF	Assay-dependent
	IHC-Fr	5 - 10 µg/ml
	IP	Assay-dependent
Application Note	* The dilutions indicate recommended starting dilutions and the optimal dilutions or concentrations should be determined by the scientist.	

### Properties

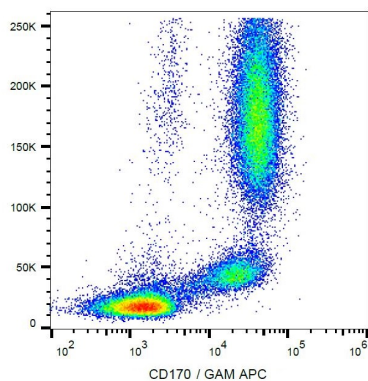
Form	Liquid
Purification	Purification with Protein A.
Buffer	PBS and 15 mM Sodium azide.

Preservative	15 mM Sodium azide
Concentration	1 mg/ml
Storage instruction	For continuous use, store undiluted antibody at 2-8°C for up to a week. For long-term storage, aliquot and store at -20°C or below. Storage in frost free freezers is not recommended. Avoid repeated freeze/thaw cycles. Suggest spin the vial prior to opening. The antibody solution should be gently mixed before use.
Note	For laboratory research only, not for drug, diagnostic or other use.

## Bioinformation

Gene Symbol	SIGLEC5
Gene Full Name	sialic acid binding Ig-like lectin 5
Background	This gene encodes a member of the sialic acid-binding immunoglobulin-like lectin (Siglec) family. These cell surface lectins are characterized by structural motifs in the immunoglobulin (Ig)-like domains and sialic acid recognition sites in the first Ig V set domain. The encoded protein is a member of the CD33-related subset of Siglecs and inhibits the activation of several cell types including monocytes, macrophages and neutrophils. Binding of group B Streptococcus (GBS) to the encoded protein plays a role in GBS immune evasion. [provided by RefSeq, Feb 2012]
Function	Putative adhesion molecule that mediates sialic-acid dependent binding to cells. Binds equally to alpha-2,3-linked and alpha-2,6-linked sialic acid. The sialic acid recognition site may be masked by cis interactions with sialic acids on the same cell surface. [UniProt]
Calculated Mw	61 kDa
Cellular Localization	Membrane; Single-pass type I membrane protein. [UniProt]

## Images



ARG42427 anti-CD170 / Siglec 5 antibody [1A5] FACS image

Flow Cytometry: Human peripheral blood cells stained with ARG42427 anti-CD170 / Siglec 5 antibody [1A5], followed by APC-conjugated Goat anti-Mouse antibody.