

## ARG42422 anti-CD300a + CD300c antibody [MEM-260] (APC)

Package: 50 tests

Store at: 4°C

### Summary

Product Description	APC-conjugated Mouse Monoclonal antibody [MEM-260] recognizes CD300a + CD300c
Tested Reactivity	Hu
Tested Application	FACS
Specificity	The antibody MEM-260 reacts with an extracellular epitope of CD300a, a 60 kDa leukocyte transmembrane glycoprotein expressed on human granulocytes, monocytes, neutrophils, NK cells, mast cells and dendritic cells, 25% of circulating T cells and 15% of circulating B cells.
Host	Mouse
Clonality	Monoclonal
Clone	MEM-260
Isotype	IgG1
Target Name	CD300a + CD300c
Species	Human
Immunogen	HPB Human acute lymphoid leukemia cell line.
Conjugation	APC
Alternate Names	CMRF-35-H9; Inhibitory receptor protein 60; NK inhibitory receptor; CMRF35-H; CMRF35H9; CD antigen CD300a; IRC1/IRC2; IGSF12; CMRF35H; IRp60; IgSF12; CMRF35-like molecule 8; CMRF35-H9; CMRF-35H; CD300 antigen-like family member A; CLM-8; IRC1; IRC2; Immunoglobulin superfamily member 12

### Application Instructions

Application table	<table><thead><tr><th>Application</th><th>Dilution</th></tr></thead><tbody><tr><td>FACS</td><td>10 µl / 100 µl of whole blood or 10<sup>6</sup> cells</td></tr></tbody></table>	Application	Dilution	FACS	10 µl / 100 µl of whole blood or 10 <sup>6</sup> cells
Application	Dilution				
FACS	10 µl / 100 µl of whole blood or 10 <sup>6</sup> cells				
Application Note	* The dilutions indicate recommended starting dilutions and the optimal dilutions or concentrations should be determined by the scientist.				

### Properties

Form	Liquid
Purification	Purified
Buffer	PBS and 15 mM Sodium azide.
Preservative	15 mM Sodium azide
Storage instruction	Aliquot and store in the dark at 2-8°C. Keep protected from prolonged exposure to light. Avoid repeated freeze/thaw cycles. Suggest spin the vial prior to opening. The antibody solution should be gently mixed before use.
Note	For laboratory research only, not for drug, diagnostic or other use.

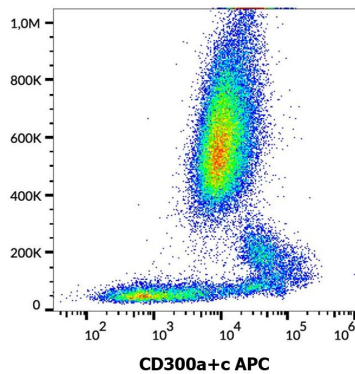
## Bioinformation

---

Gene Symbol	CD300A
Gene Full Name	CD300a molecule
Background	This gene encodes a member of the CD300 glycoprotein family of cell surface proteins found on leukocytes involved in immune response signaling pathways. This gene is located on chromosome 17 in a cluster with all but one of the other family members. Multiple transcript variants encoding different isoforms have been found for this gene. [provided by RefSeq, Feb 2012]
Function	Inhibitory receptor which may contribute to the down-regulation of cytolytic activity in natural killer (NK) cells, and to the down-regulation of mast cell degranulation (PubMed:10746781, PubMed:16339535, PubMed:9701027). Negatively regulates the Toll-like receptor (TLR) signaling mediated by MYD88 but not TRIF through activation of PTPN6 (PubMed:22043923). [UniProt]
Calculated Mw	33 kDa
PTM	Phosphorylated on tyrosine.  N-glycosylated. [UniProt]
Cellular Localization	Cell membrane; Single-pass type I membrane protein. [UniProt]

---

## Images



ARG42422 anti-CD300a + CD300c antibody [MEM-260] (APC) FACS image

Flow Cytometry: Human peripheral blood cells stained with ARG42422 anti-CD300a + CD300c antibody [MEM-260] (APC).

---