

## ARG42406 anti-M. tuberculosis antigen Tb10.3 antibody

Package: 100 µg  
Store at: -20°C

### Summary

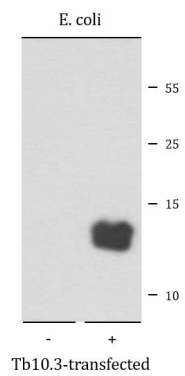
Product Description	Rabbit Polyclonal antibody recognizes M. tuberculosis antigen Tb10.3
Tested Reactivity	M. tuberculosis
Tested Application	ELISA, WB
Specificity	The rabbit polyclonal antibody to Tb10.3 reacts with Mycobacterium tuberculosis protein Tb10.3 (EsxR).
Host	Rabbit
Clonality	Polyclonal
Isotype	IgG
Target Name	M. tuberculosis antigen Tb10.3
Species	Bacteria
Immunogen	Recombinant M. tuberculosis Tb10.3 protein (produced in E. coli).
Conjugation	Un-conjugated
Alternate Names	Rv3019c; EsxR

### Application Instructions

Application table	Application	Dilution
	ELISA	Assay-dependent
	WB	Assay-dependent
Application Note	* The dilutions indicate recommended starting dilutions and the optimal dilutions or concentrations should be determined by the scientist.	

### Properties

Form	Liquid
Purification	Affinity purified.
Buffer	PBS and 15 mM Sodium azide.
Preservative	15 mM Sodium azide
Concentration	1 mg/ml
Storage instruction	For continuous use, store undiluted antibody at 2-8°C for up to a week. For long-term storage, aliquot and store at -20°C or below. Storage in frost free freezers is not recommended. Avoid repeated freeze/thaw cycles. Suggest spin the vial prior to opening. The antibody solution should be gently mixed before use.
Note	For laboratory research only, not for drug, diagnostic or other use.



ARG42406 anti-M. tuberculosis antigen Tb10.3 antibody WB image

Western blot: Non-transfected E. coli and Tb10.3-transfected E. coli. Cell lysates were stained with ARG42406 anti-M. tuberculosis antigen Tb10.3 antibody.