

ARG42367
anti-ARHGEF4 antibody [ARHGEF-08]Package: 100 µg
Store at: -20°C

Summary

Product Description	Mouse Monoclonal antibody [ARHGEF-08] recognizes ARHGEF4
Tested Reactivity	Hu
Tested Application	FACS, WB
Specificity	The mouse monoclonal antibody ARHGEF-08 recognizes human intracellular protein ARHGEF4 / ASEF1, approx. 80 kDa guanine nucleotide exchange factor specific for Rac1 and Cdc42. The epitope is located in the rough at the region of SH3 domain.
Host	Mouse
Clonality	Monoclonal
Clone	ARHGEF-08
Isotype	IgG1
Target Name	ARHGEF4
Species	Human
Immunogen	Recombinant fragment corresponding to aa. 143-271 of Human ARHGEF4.
Conjugation	Un-conjugated
Alternate Names	STM6; Rho guanine nucleotide exchange factor 4; Asef; GEF4; APC-stimulated guanine nucleotide exchange factor 1; Asef1; ASEF; ASEF1

Application Instructions

Application table	Application	Dilution
	FACS	1 - 4 µg/ml
	WB	Assay-dependent
Application Note	* The dilutions indicate recommended starting dilutions and the optimal dilutions or concentrations should be determined by the scientist.	

Properties

Form	Liquid
Purification	Purification with Protein A.
Buffer	PBS and 15 mM Sodium azide.
Preservative	15 mM Sodium azide
Concentration	1 mg/ml
Storage instruction	For continuous use, store undiluted antibody at 2-8°C for up to a week. For long-term storage, aliquot and store at -20°C or below. Storage in frost free freezers is not recommended. Avoid repeated freeze/thaw cycles. Suggest spin the vial prior to opening. The antibody solution should be gently mixed

before use.

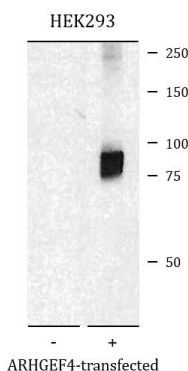
Note

For laboratory research only, not for drug, diagnostic or other use.

Bioinformation

Gene Symbol	ARHGEF4
Gene Full Name	Rho guanine nucleotide exchange factor (GEF) 4
Background	Rho GTPases play a fundamental role in numerous cellular processes that are initiated by extracellular stimuli that work through G protein coupled receptors. The protein encoded by this gene may form complex with G proteins and stimulate Rho-dependent signals. Multiple alternatively spliced transcript variants encoding different isoforms have been found, but the full-length nature of some variants has not been determined. [provided by RefSeq, Jun 2013]
Function	Acts as guanine nucleotide exchange factor (GEF) for RHOA, RAC1 and CDC42 GTPases. Binding of APC may activate RAC1 GEF activity. The APC-ARHGEF4 complex seems to be involved in cell migration as well as in E-cadherin-mediated cell-cell adhesion. Required for MMP9 up-regulation via the JNK signaling pathway in colorectal tumor cells. Involved in tumor angiogenesis and may play a role in intestinal adenoma formation and tumor progression. [UniProt]
Calculated Mw	79 kDa
Cellular Localization	Isoform 3: Cytoplasm. Cell projection, ruffle membrane; Peripheral membrane protein; Cytoplasmic side. Note=Associated with membrane ruffles. [UniProt]

Images



ARG42367 anti-ARHGEF4 antibody [ARHGEF-08] WB image

Western blot: Non-transfected HEK293 and ARHGEF4-transfected HEK293. Cell lysates were stained with ARG42367 anti-ARHGEF4 antibody [ARHGEF-08].