

## ARG42322 anti-CD273 / PD-L2 antibody [24F.10C12] (APC)

Package: 50 tests

Store at: 4°C

### Summary

Product Description	APC-conjugated Mouse Monoclonal antibody [24F.10C12] recognizes CD273 / PD-L2
Tested Reactivity	Hu
Tested Application	FACS
Specificity	The mouse monoclonal antibody 24F.10C12 recognizes an extracellular epitope of CD273 / PD-L2 (also known as B7-DC), a 25 kDa type I transmembrane protein expressed by dendritic cells, activated monocytes and T cells, heart, first trimester placenta, lung and liver, as well as in Hodgkin's lymphoma cells and primary mediastinal B cell lymphoma (PMBL).
Host	Mouse
Clonality	Monoclonal
Clone	24F.10C12
Isotype	IgG2a, kappa
Target Name	CD273 / PD-L2
Species	Human
Immunogen	Human CD273.
Conjugation	APC
Alternate Names	B7DC; bA574F11.2; PDL2; CD antigen CD273; PD-L2; Programmed cell death 1 ligand 2; CD273; Btdc; PDCD1L2; Programmed death ligand 2; Butyrophilin B7-DC; B7-DC; PD-1 ligand 2; PDCD1 ligand 2

### Application Instructions

Application table	Application	Dilution
	FACS	10 µl / 100 µl of whole blood or 10 <sup>6</sup> cells

**Application Note** \* The dilutions indicate recommended starting dilutions and the optimal dilutions or concentrations should be determined by the scientist.

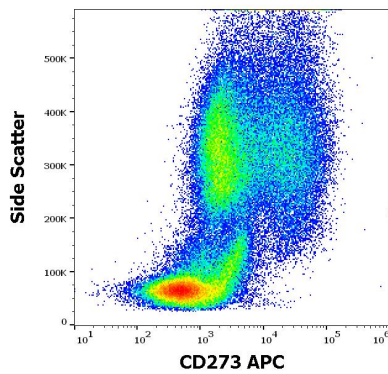
### Properties

Form	Liquid
Purification	Purified
Buffer	PBS and 15 mM Sodium azide.
Preservative	15 mM Sodium azide
Storage instruction	Aliquot and store in the dark at 2-8°C. Keep protected from prolonged exposure to light. Avoid repeated freeze/thaw cycles. Suggest spin the vial prior to opening. The antibody solution should be gently mixed before use.
Note	For laboratory research only, not for drug, diagnostic or other use.

## Bioinformation

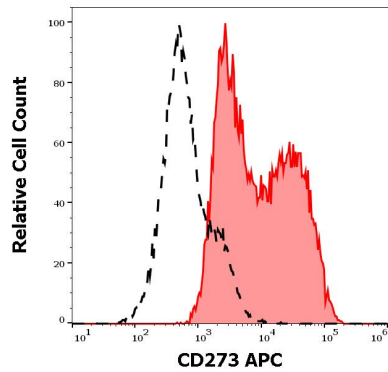
Gene Symbol	PDCD1LG2
Gene Full Name	programmed cell death 1 ligand 2
Function	Involved in the costimulatory signal, essential for T-cell proliferation and IFNG production in a PDCD1-independent manner. Interaction with PDCD1 inhibits T-cell proliferation by blocking cell cycle progression and cytokine production (By similarity). [UniProt]
Calculated Mw	31 kDa
Cellular Localization	Isoform 3: Secreted. Isoform 2: Endomembrane system; Single-pass type I membrane protein. Isoform 1: Cell membrane; Single-pass type I membrane protein. [UniProt]

## Images



ARG42322 anti-CD273 / PD-L2 antibody [24F.10C12] (APC) FACS image

Flow Cytometry: Human stimulated monocytes (GM-CSF + IL-4) stained with ARG42322 anti-CD273 / PD-L2 antibody [24F.10C12] (APC) at 10  $\mu$ l / 10<sup>6</sup> cells in 100  $\mu$ l of cell suspension.



ARG42322 anti-CD273 / PD-L2 antibody [24F.10C12] (APC) FACS image

Flow Cytometry: Separation of Human dendritic cells differentiated upon monocyte stimulation (GM-CSF + IL-4) (red-filled) from non-stimulated lymphocytes (black-dashed). Cells were stained with ARG42322 anti-CD273 / PD-L2 antibody [24F.10C12] (APC) at 10  $\mu$ l / 100  $\mu$ l of peripheral whole blood.