

**ARG42318**  
**anti-CD157 / BST1 antibody [SY11B5] (APC)**

Package: 50 tests

Store at: 4°C

### Summary

Product Description	APC-conjugated Mouse Monoclonal antibody [SY11B5] recognizes CD157 / BST1
Tested Reactivity	Hu, NHuPrm
Tested Application	FACS
Specificity	The mouse monoclonal antibody SY11B5 recognizes CD157, an approximately 45 kDa GPI-anchored extracellular protein expressed mainly on monocytes, macrophages, granulocytes and bone marrow stromal cells.
Host	Mouse
Clonality	Monoclonal
Clone	SY11B5
Isotype	IgG1, kappa
Target Name	CD157 / BST1
Species	Human
Immunogen	Human CD157.
Conjugation	APC
Alternate Names	cADPr hydrolase 2; ADP-ribosyl cyclase 2; Cyclic ADP-ribose hydrolase 2; BST-1; Bone marrow stromal antigen 1; CD157; ADP-ribosyl cyclase/cyclic ADP-ribose hydrolase 2; CD antigen CD157; EC 3.2.2.6

### Application Instructions

Application table	Application	Dilution
	FACS	10 µl / 100 µl of whole blood or 10 <sup>6</sup> cells

**Application Note** \* The dilutions indicate recommended starting dilutions and the optimal dilutions or concentrations should be determined by the scientist.

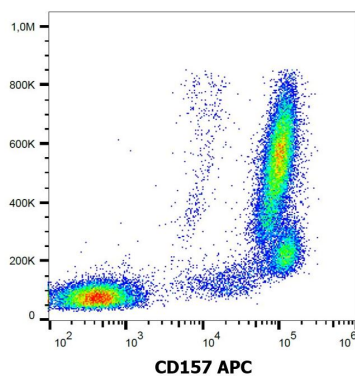
### Properties

Form	Liquid
Purification	Purified
Buffer	PBS and 15 mM Sodium azide.
Preservative	15 mM Sodium azide
Storage instruction	Aliquot and store in the dark at 2-8°C. Keep protected from prolonged exposure to light. Avoid repeated freeze/thaw cycles. Suggest spin the vial prior to opening. The antibody solution should be gently mixed before use.
Note	For laboratory research only, not for drug, diagnostic or other use.

## Bioinformation

Gene Symbol	BST1
Gene Full Name	bone marrow stromal cell antigen 1
Background	Bone marrow stromal cell antigen-1 is a stromal cell line-derived glycosylphosphatidylinositol-anchored molecule that facilitates pre-B-cell growth. The deduced amino acid sequence exhibits 33% similarity with CD38. BST1 expression is enhanced in bone marrow stromal cell lines derived from patients with rheumatoid arthritis. The polyclonal B-cell abnormalities in rheumatoid arthritis may be, at least in part, attributed to BST1 overexpression in the stromal cell population. [provided by RefSeq, Jul 2008]
Function	Synthesizes the second messengers cyclic ADP-ribose and nicotinate-adenine dinucleotide phosphate, the former a second messenger that elicits calcium release from intracellular stores. May be involved in pre-B-cell growth. [UniProt]
Calculated Mw	36 kDa
Cellular Localization	Cell membrane; Lipid-anchor, GPI-anchor. [UniProt]

## Images



ARG42318 anti-CD157 / BST1 antibody [SY11B5] (APC) FACS image

Flow Cytometry: Human peripheral blood leukocytes stained with ARG42318 anti-CD157 / BST1 antibody [SY11B5] (APC).