

ARG42260 anti-CD62L / L-Selectin antibody [DREG56] (low endotoxin)

Package: 100 µg
Store at: -20°C

Summary

Product Description	Azide free and low endotoxin Mouse Monoclonal antibody [DREG56] recognizes CD62L / L-Selectin
Tested Reactivity	Hu
Tested Application	FACS, FuncSt, IHC-Fr, IP, WB
Specificity	The mouse monoclonal antibody DREG56 recognizes an extracellular epitope of CD62L / L-selectin, a 65-76 kDa cell surface protein, expressed by neutrophils, monocytes, and subsets of T, B, and NK cells, that interacts with specific carbohydrates exposed on activated endothelial cells.
Host	Mouse
Clonality	Monoclonal
Clone	DREG56
Isotype	IgG1
Target Name	CD62L / L-Selectin
Species	Human
Immunogen	PMA-activated Human peripheral blood leukocytes.
Conjugation	Un-conjugated
Alternate Names	Leukocyte surface antigen Leu-8; Leukocyte adhesion molecule 1; CD antigen CD62L; PLNHR; LSEL; CD62L; Leukocyte-endothelial cell adhesion molecule 1; L-selectin; LAM1; LNHR; TQ1; CD62 antigen-like family member L; gp90-MEL; Lymph node homing receptor; LYAM1; LECAM1; LEU8; LAM-1

Application Instructions

Application table	Application	Dilution
	FACS	2 µg/ml
	FuncSt	Assay-dependent
	IHC-Fr	Assay-dependent
	IP	Assay-dependent
	WB	Assay-dependent

Application Note * The dilutions indicate recommended starting dilutions and the optimal dilutions or concentrations should be determined by the scientist.

Properties

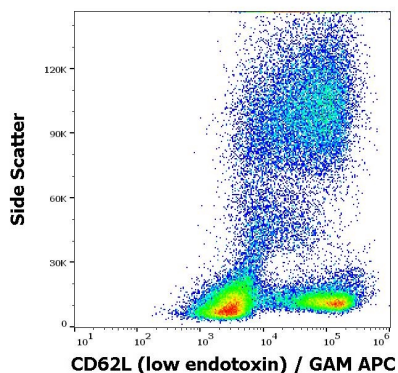
Form	Liquid
Purification	Purification with Protein A.
Purification Note	0.2 µm filter sterilized. Endotoxin level is less than 0.01 EU/µg of the protein.

Buffer	PBS
Concentration	1 mg/ml
Storage instruction	For continuous use, store undiluted antibody at 2-8°C for up to a week. For long-term storage, aliquot and store at -20°C or below. Storage in frost free freezers is not recommended. Avoid repeated freeze/thaw cycles. Suggest spin the vial prior to opening. The antibody solution should be gently mixed before use.
Note	For laboratory research only, not for drug, diagnostic or other use.

Bioinformation

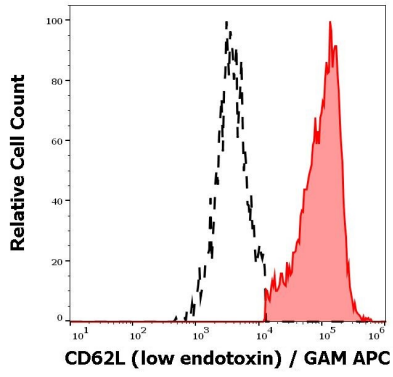
Gene Symbol	SELL
Gene Full Name	selectin L
Background	This gene encodes a cell surface adhesion molecule that belongs to a family of adhesion/homing receptors. The encoded protein contains a C-type lectin-like domain, a calcium-binding epidermal growth factor-like domain, and two short complement-like repeats. The gene product is required for binding and subsequent rolling of leucocytes on endothelial cells, facilitating their migration into secondary lymphoid organs and inflammation sites. Single-nucleotide polymorphisms in this gene have been associated with various diseases including immunoglobulin A nephropathy. Alternatively spliced transcript variants have been found for this gene. [provided by RefSeq, Oct 2009]
Function	Calcium-dependent lectin that mediates cell adhesion by binding to glycoproteins on neighboring cells (PubMed:12403782, PubMed:28489325, PubMed:28011641). Mediates the adherence of lymphocytes to endothelial cells of high endothelial venules in peripheral lymph nodes. Promotes initial tethering and rolling of leukocytes in endothelia (PubMed:12403782, PubMed:28011641). [UniProt]
Calculated Mw	42 kDa
Cellular Localization	Cell membrane; Single-pass type I membrane protein. [UniProt]

Images



ARG42260 anti-CD62L / L-Selectin antibody [DREG56] (low endotoxin) FACS image

Flow Cytometry: Human peripheral blood stained with ARG42260 anti-CD62L / L-Selectin antibody [DREG56] (low endotoxin) at 1 µg/ml dilution, followed by APC-conjugated Goat anti-Mouse antibody.



ARG42260 anti-CD62L / L-Selectin antibody [DREG56] (low endotoxin) FACS image

Flow Cytometry: Separation of Human CD62L positive lymphocytes (red-filled) from CD62L negative lymphocytes (black-dashed). Human peripheral whole blood stained with ARG42260 anti-CD62L / L-Selectin antibody [DREG56] (low endotoxin) at 1 µg/ml dilution, followed by APC-conjugated Goat anti-Mouse antibody.